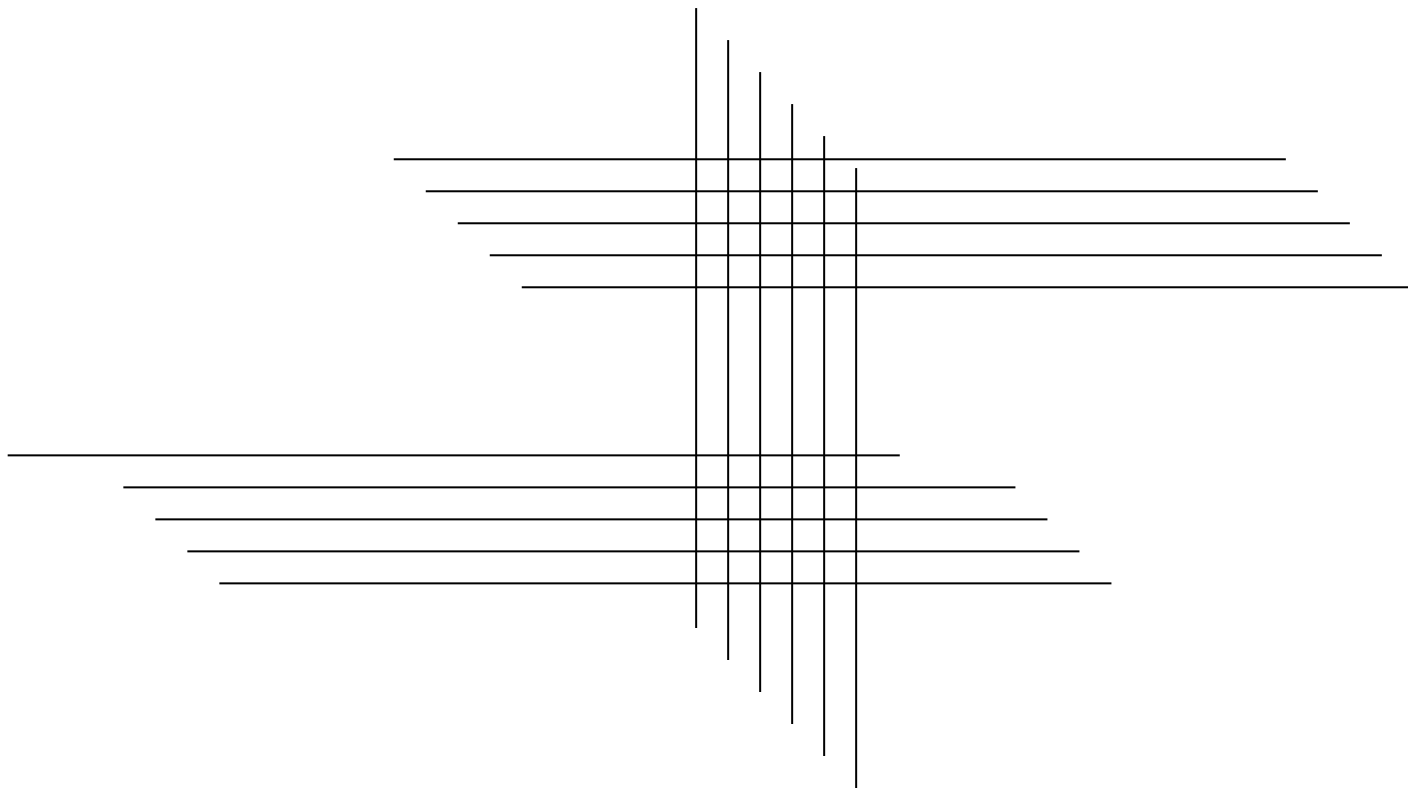
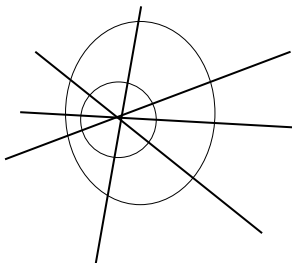
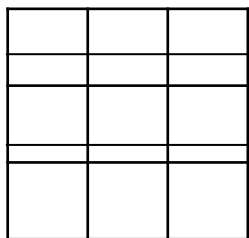
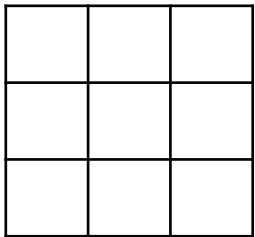


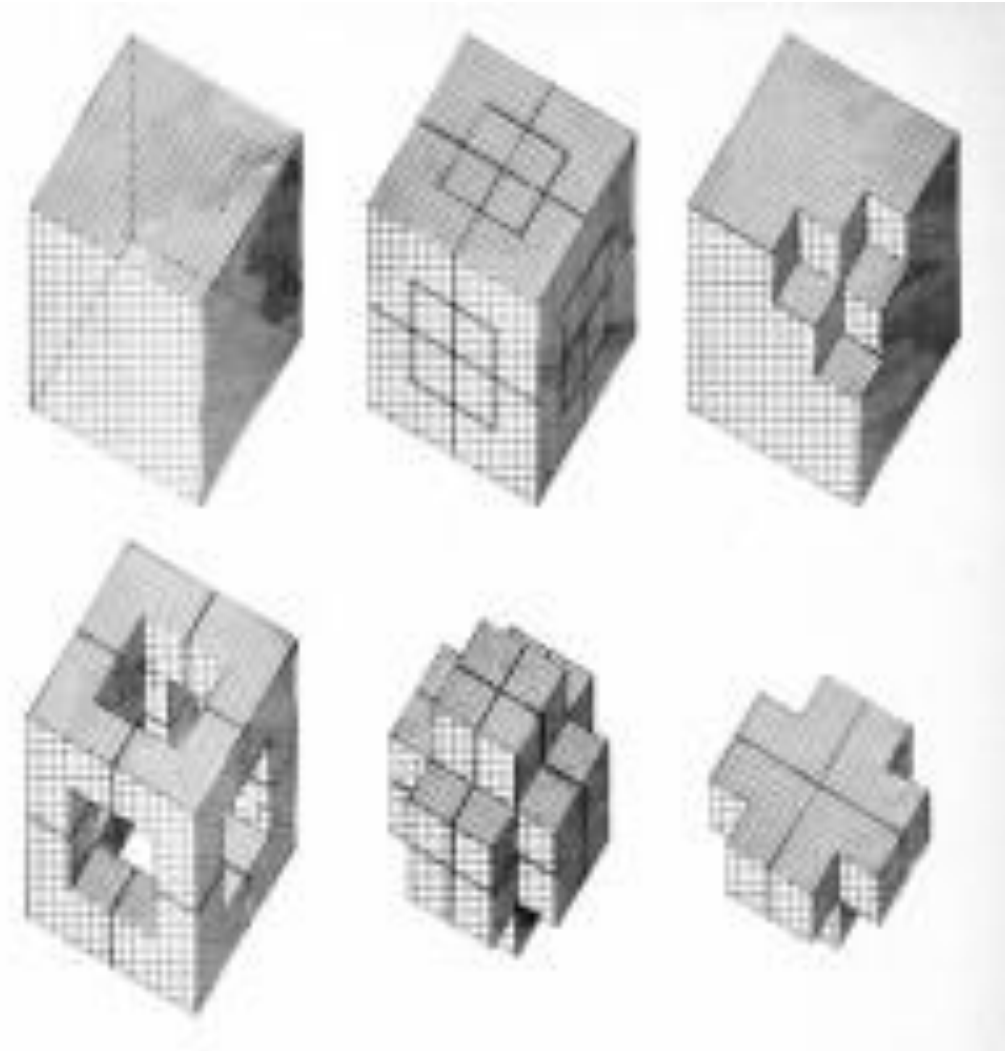


COMPOSICION URBANA Y ARQUITECTONICA 2020 A
ARQ. MG. RICARDO CHECA MORA

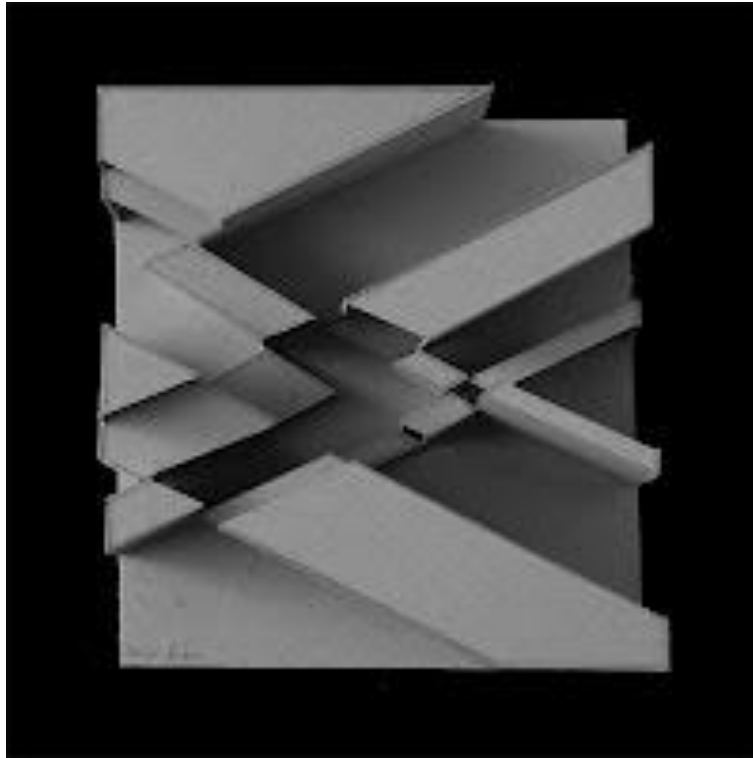




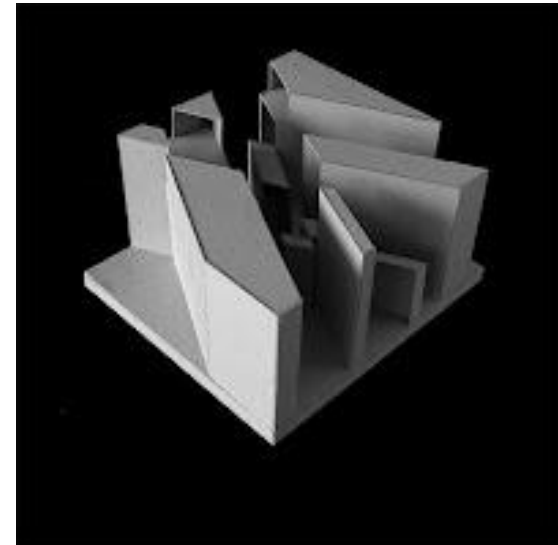
ESTRUCTURA MATRIZ DE LA
FORMA

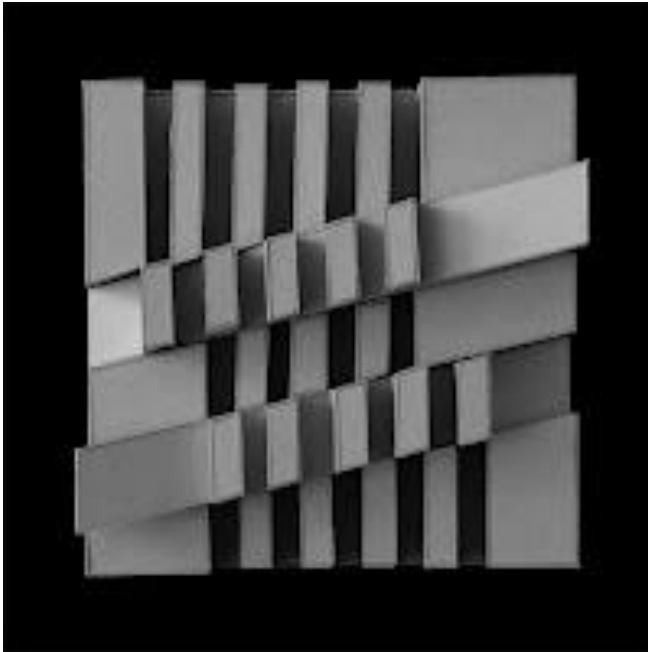


ESTRUCTURA 3D

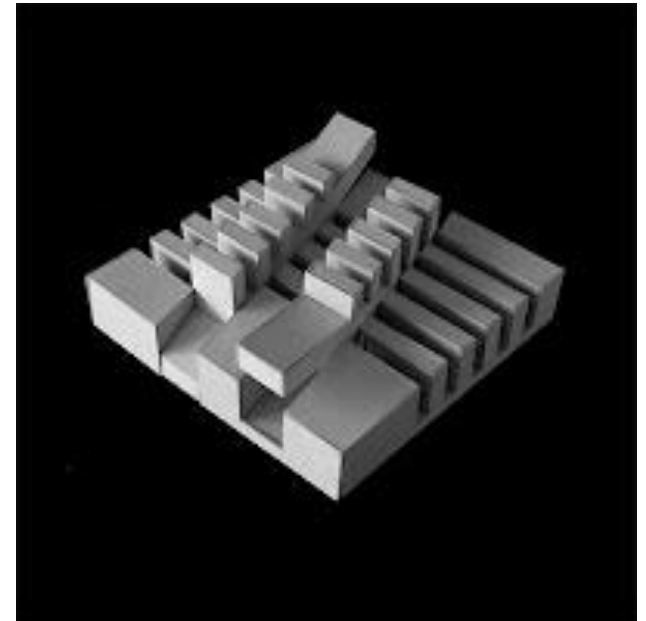


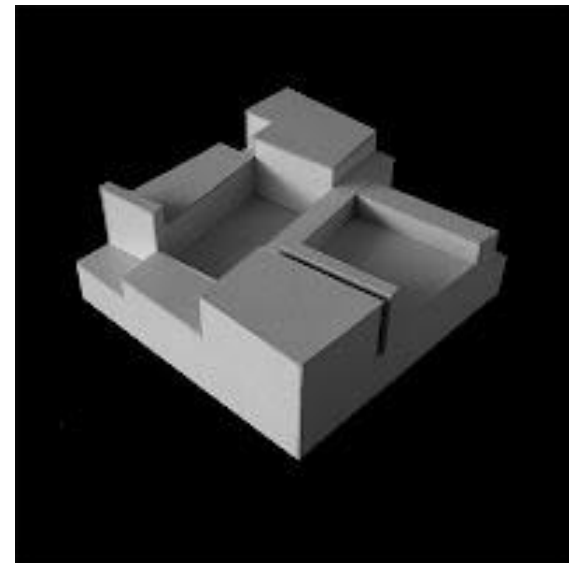
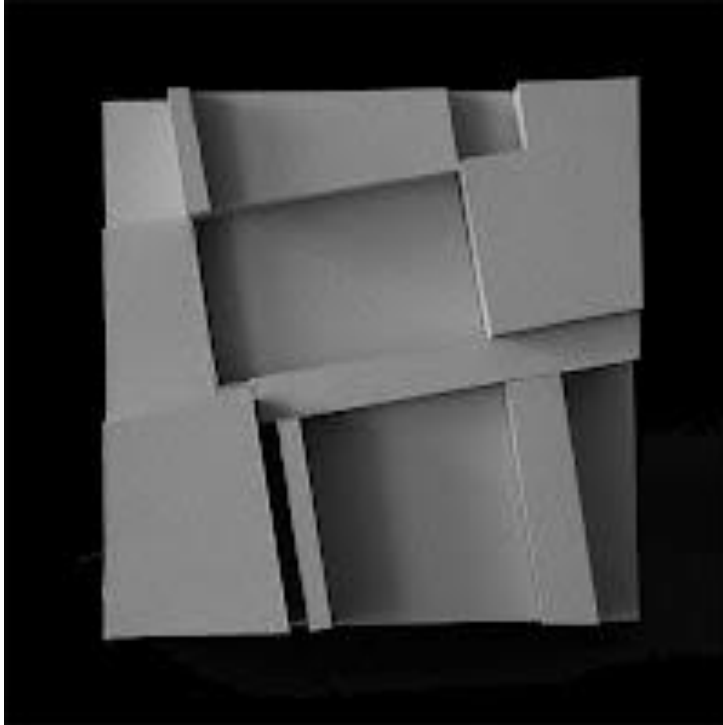
ESTRUCTURA 3D





ESTRUCTURA 3D

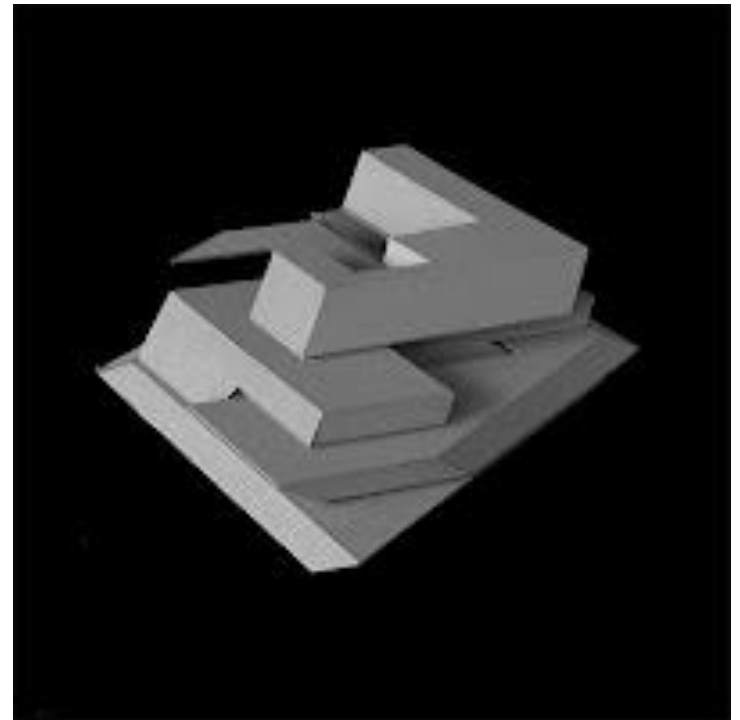


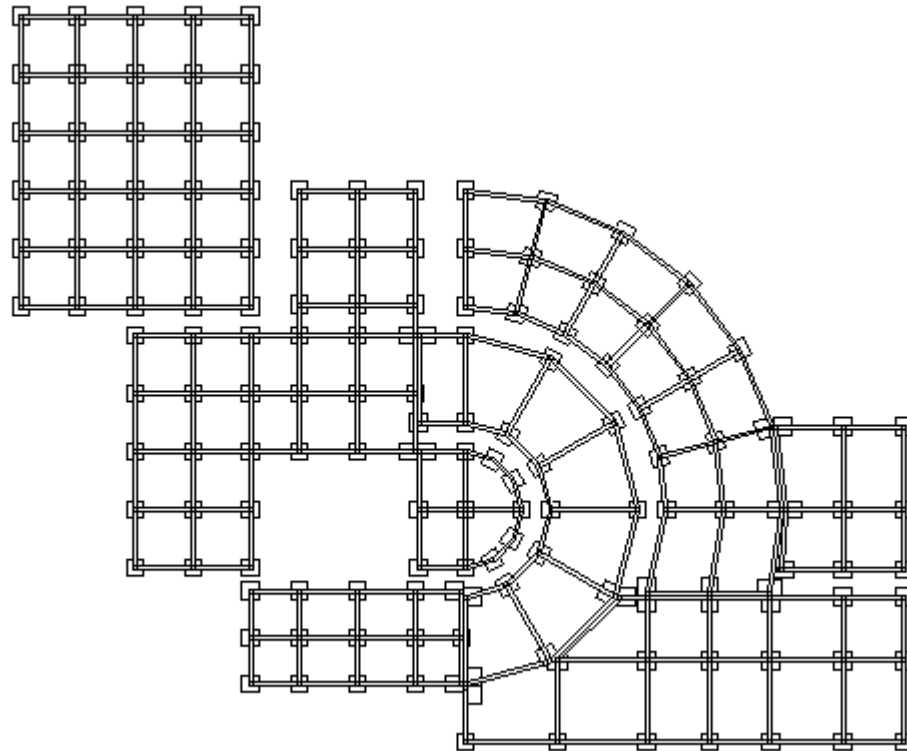


ESTRUCTURA 3D

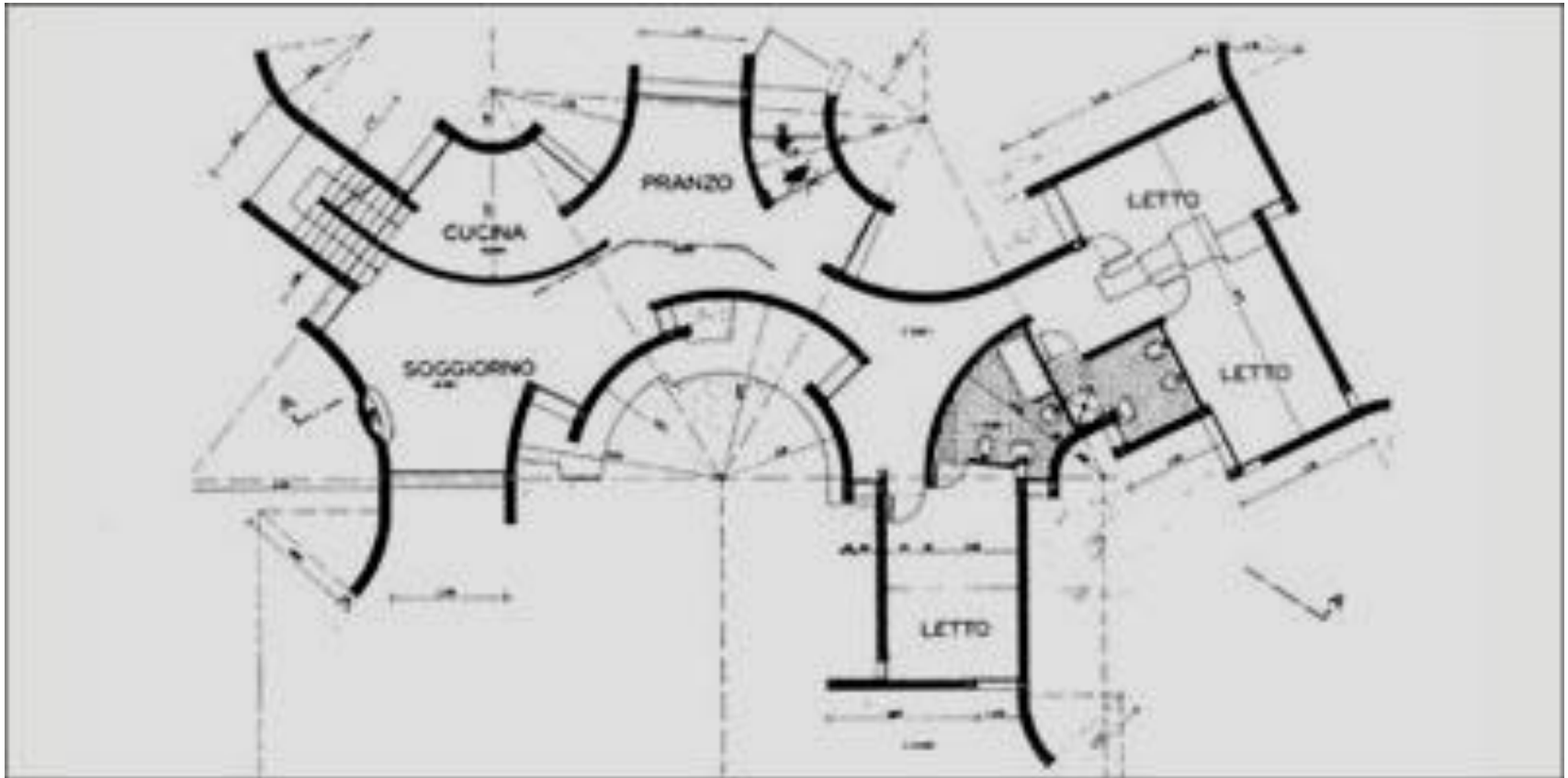


ESTRUCTURA 3D

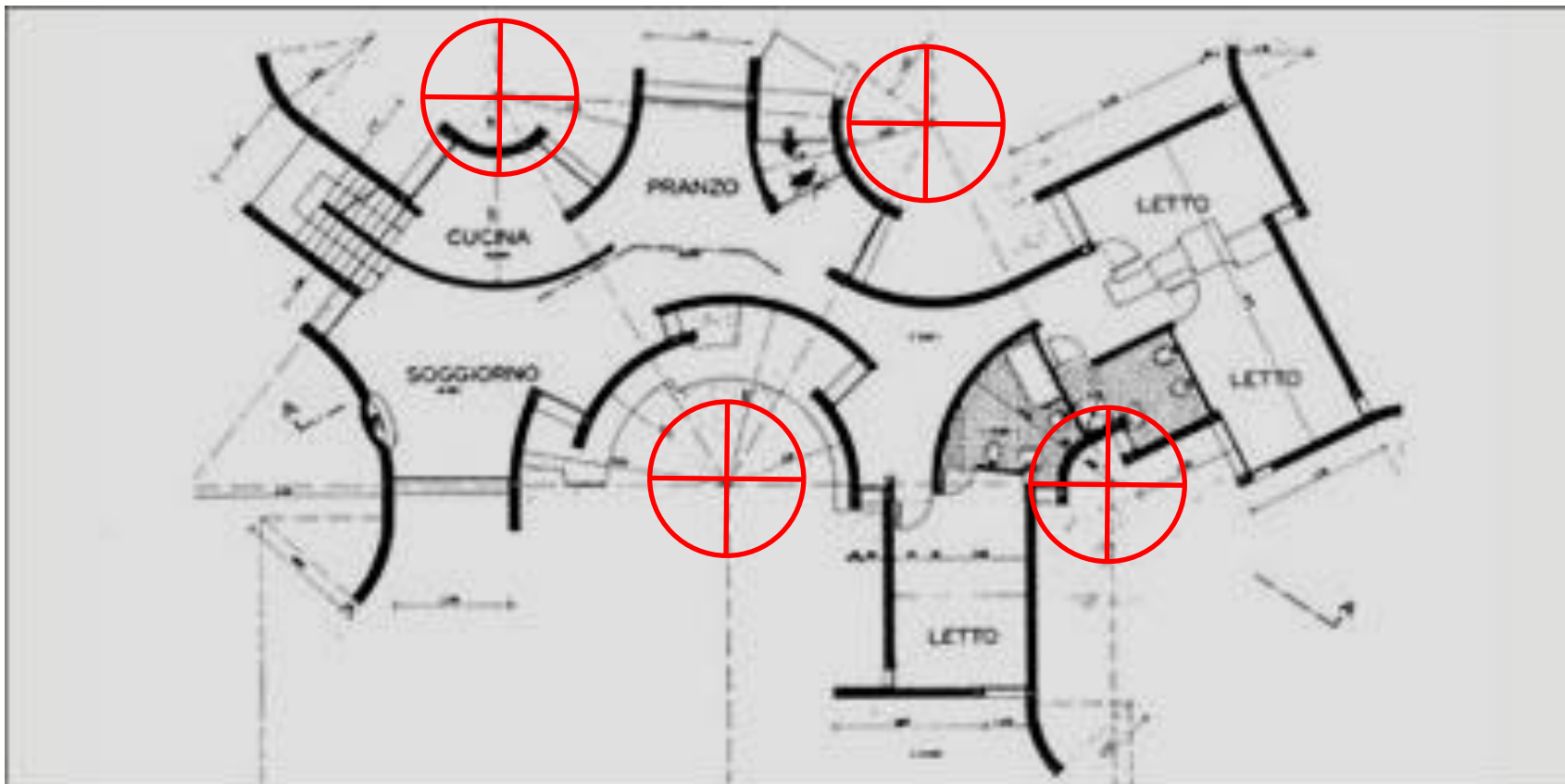




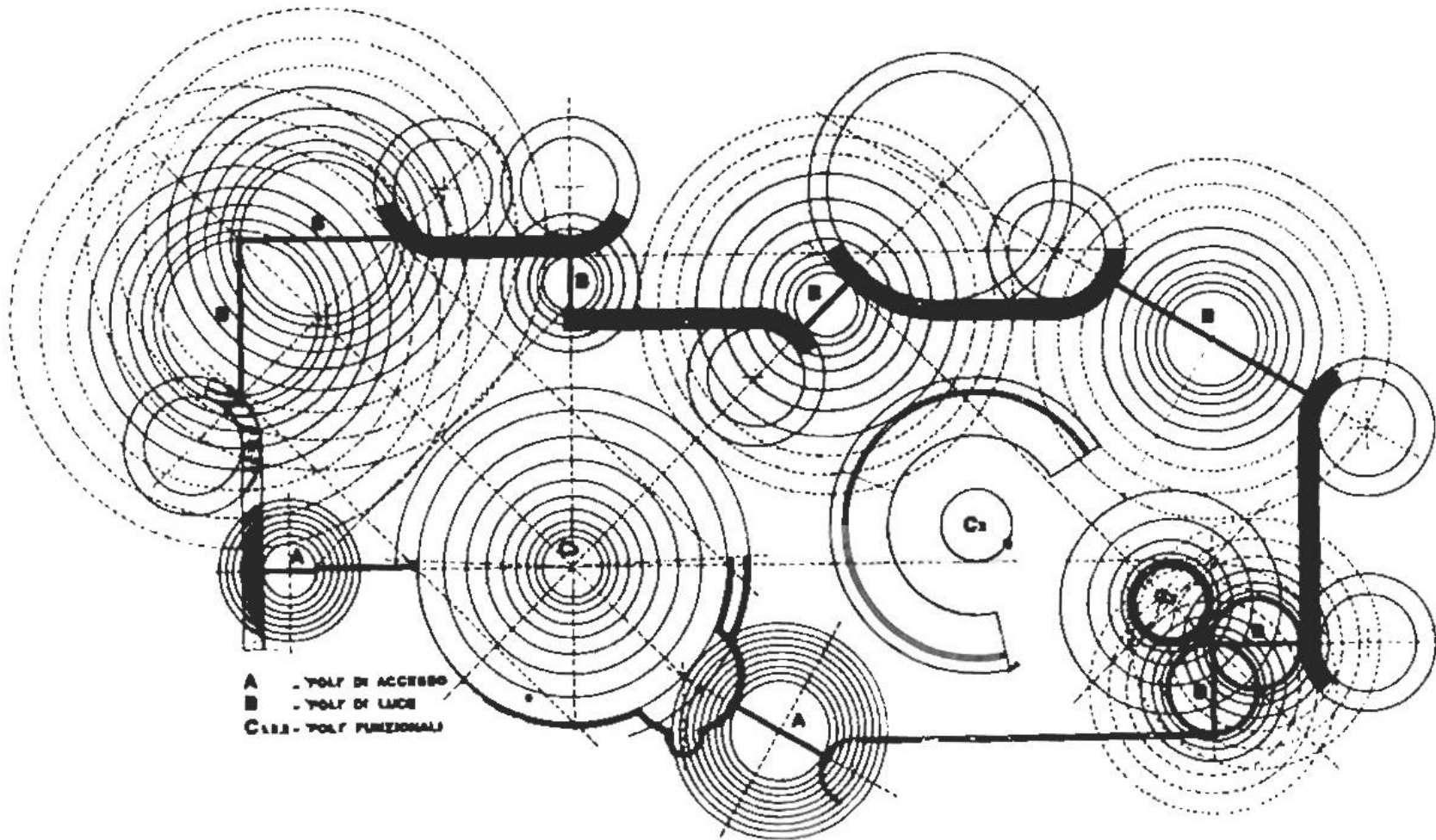
MALLA REGULADORA MIXTA



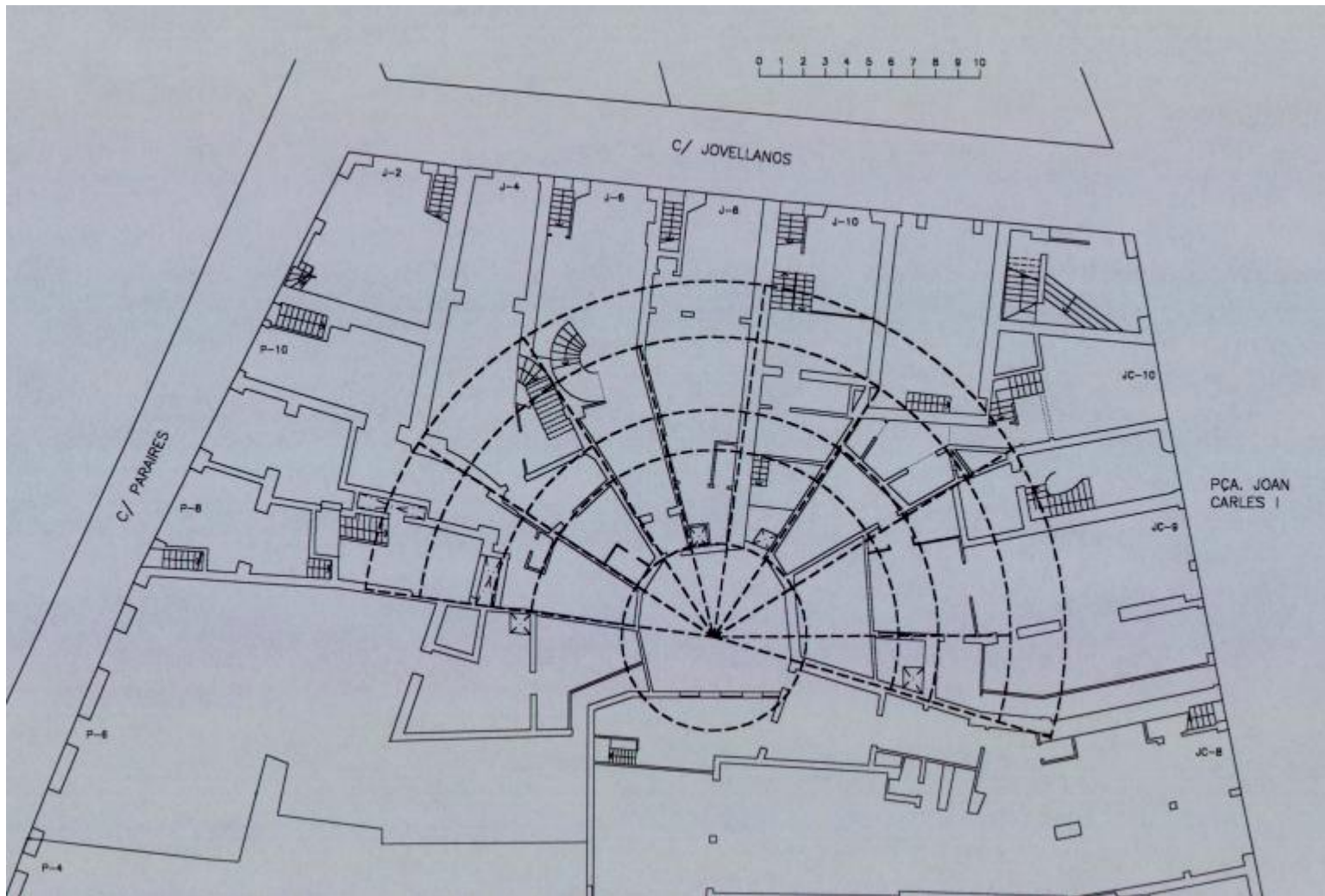
MALLA REGULADORA
FRAGMENTO



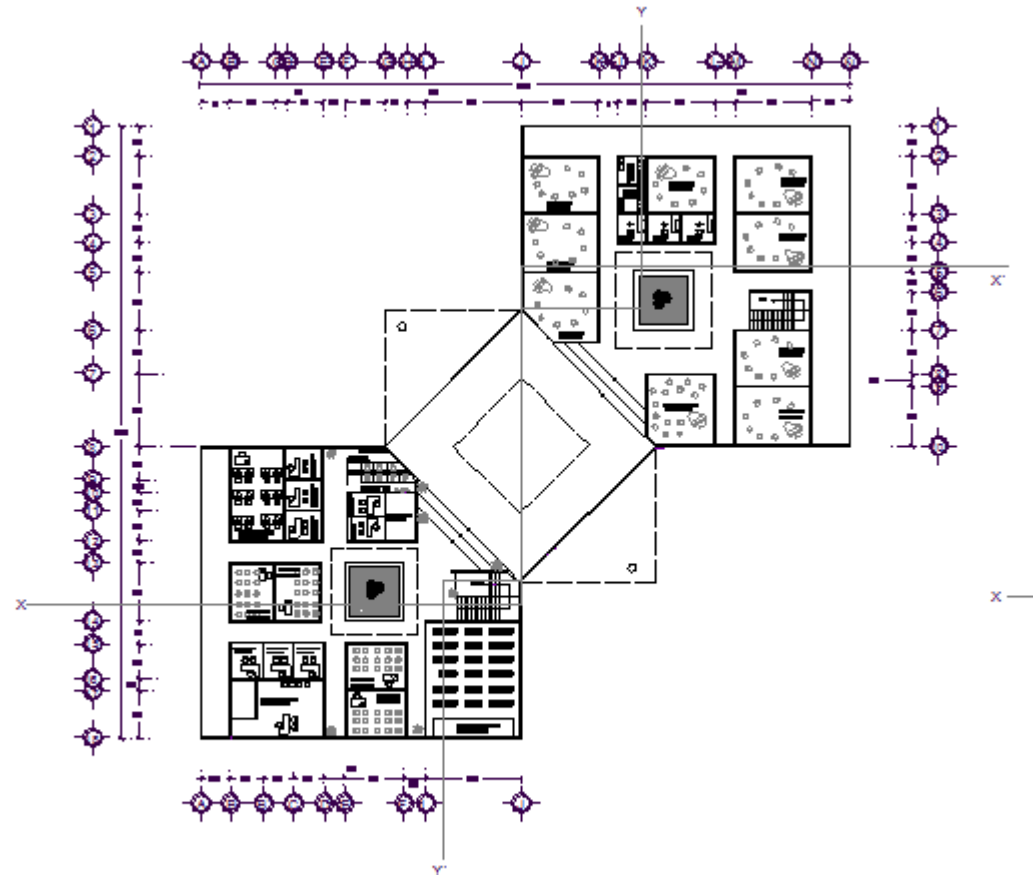
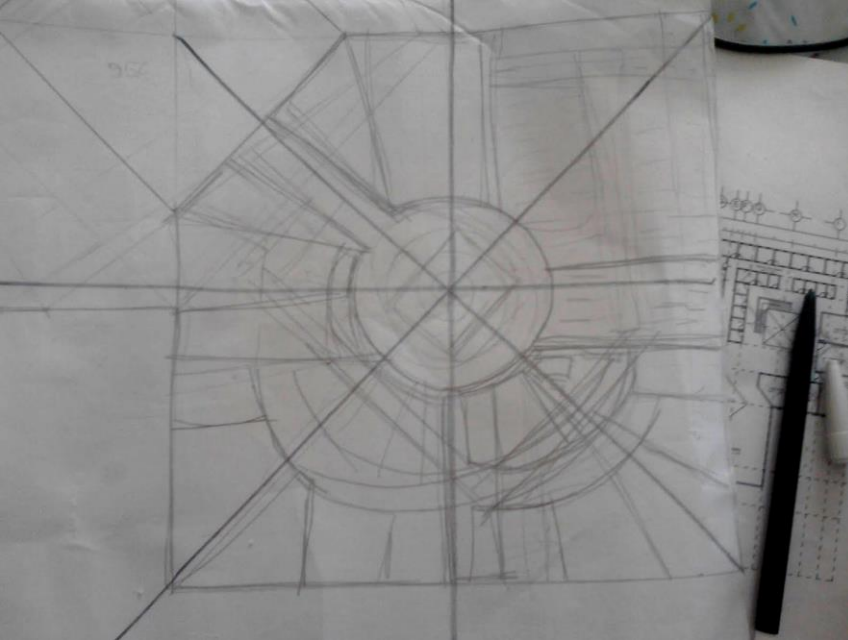
MALLA REGULADORA
FRAGMENTO



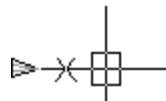
MALLA REGULADORA
FRAGMENTO



MALLA REGULADORA



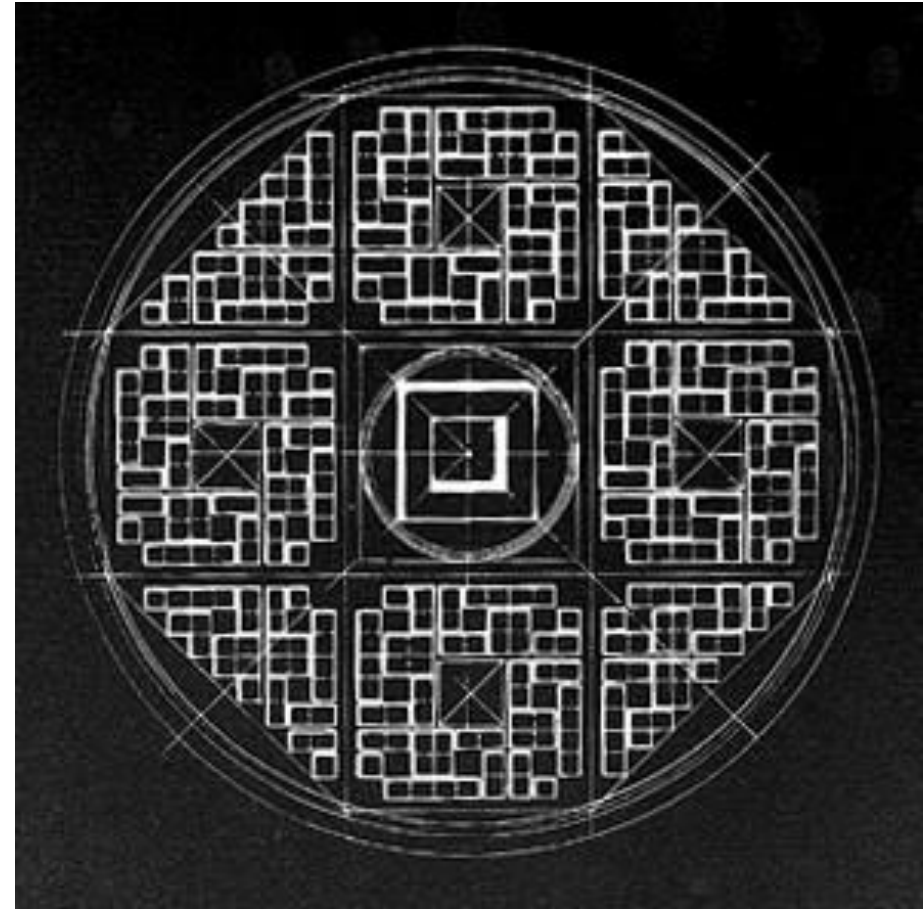
MALLA REGULADORA





RICARDO BOFILL
POBLADO AGRICOLA HOUARI
ARGELIA

MALLA REGULADORA

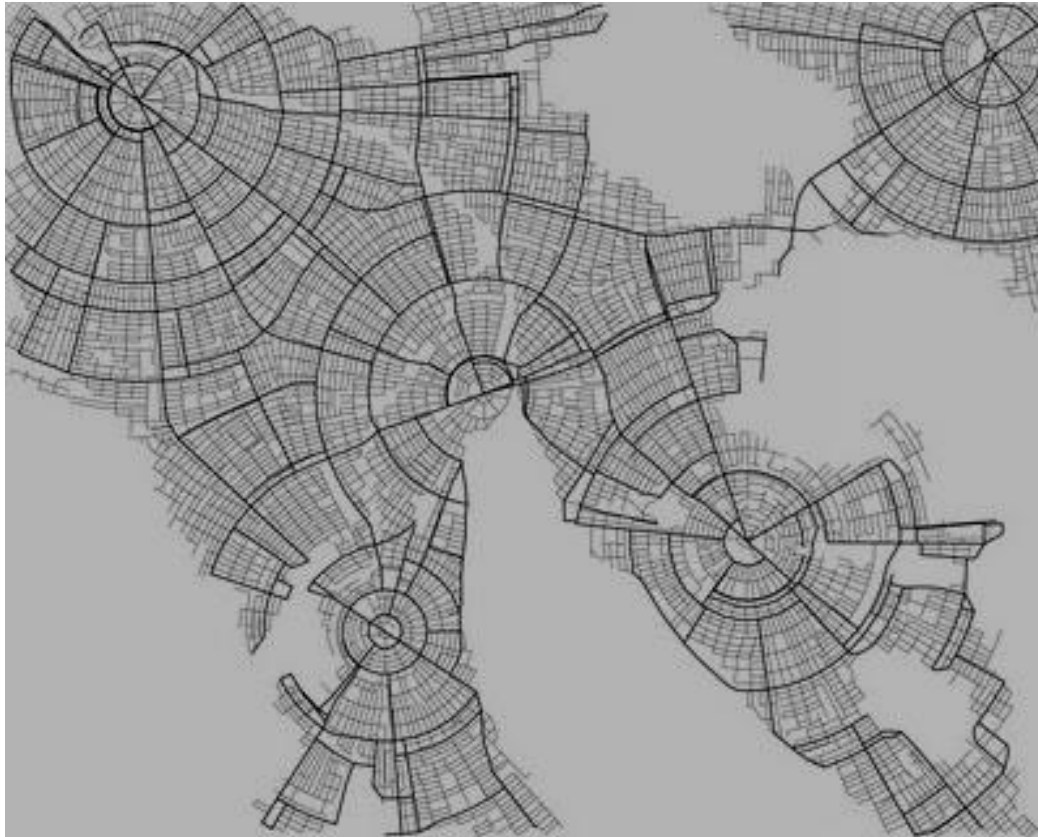




RICARDO BOFILL
MURALLA ROJA

MALLA REGULADORA





PLANIFICACION URBANA

MALLA REGULADORA

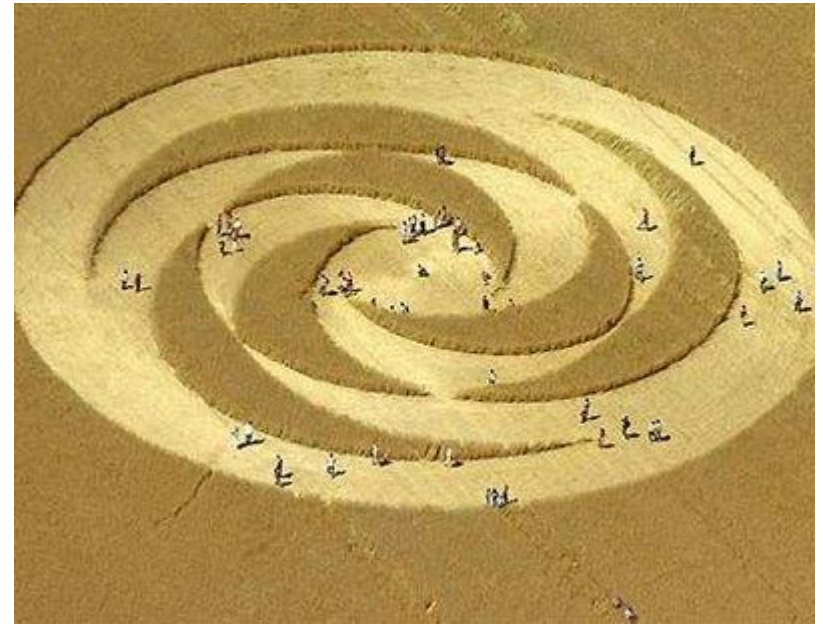
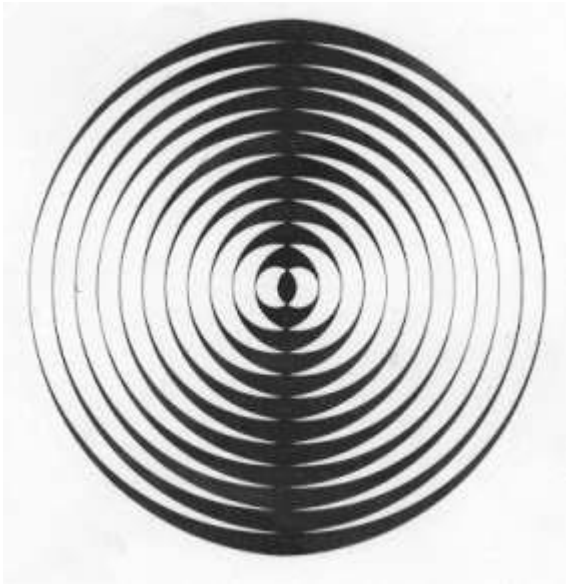


Wassily Kandinsky

Circles in a circle

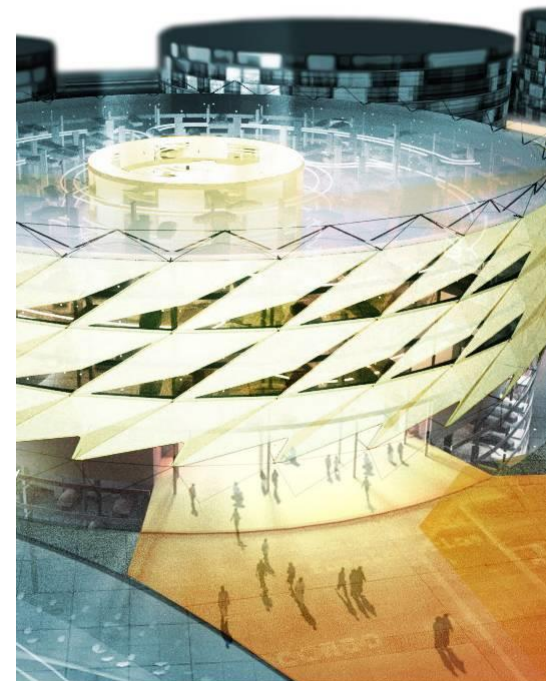
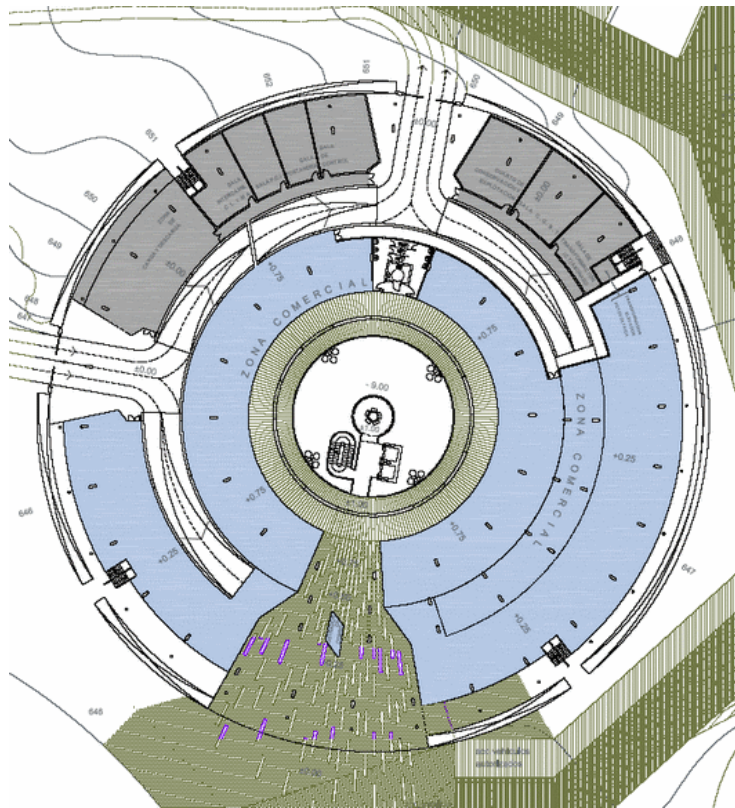


OPERACIONES CON CIRCULOS



1

OPERACIÓN 1
CIRCULOS CONCENTRICOS



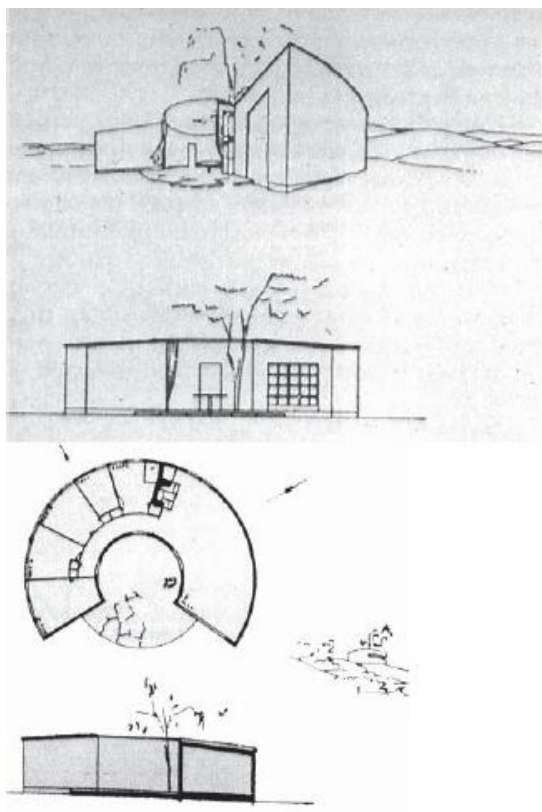
RICHARD ROGERS PARTNERSHIP + VIDAL Y
ASOCIADOS ARQUITECTOS
CAMPUS DE JUSTICIA DE MADRID

OPERACIÓN 1
CIRCULOS CONCENTRICOS



ALDEA CHINA

OPERACIÓN 1
CIRCULOS CONCENTRICOS

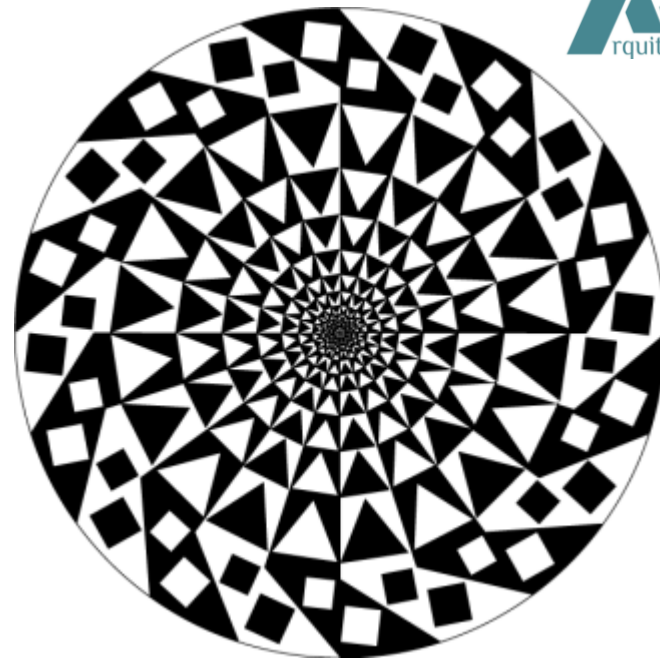
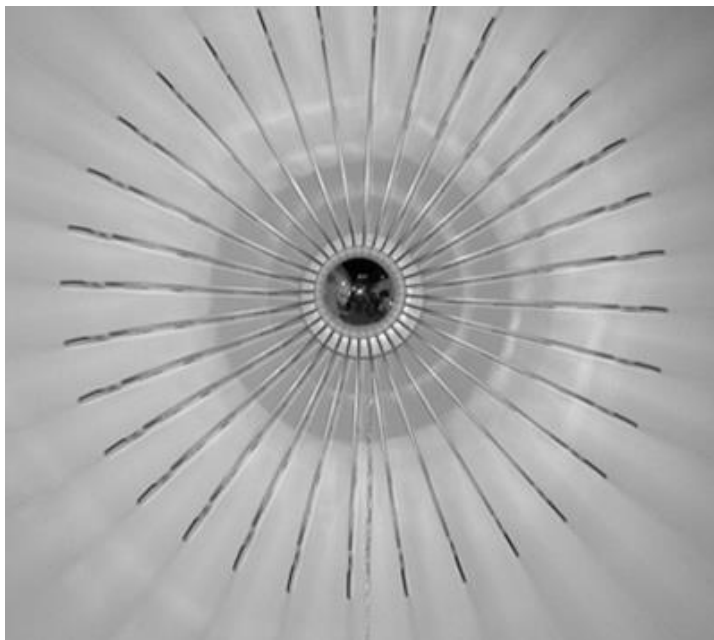


ARNE JACOBSEN
DINAMARCA – 1929

**OPERACIÓN 1
CIRCULOS CONCENTRICOS**







2

**OPERACIÓN 2
RELACION CON EL CENTRO**

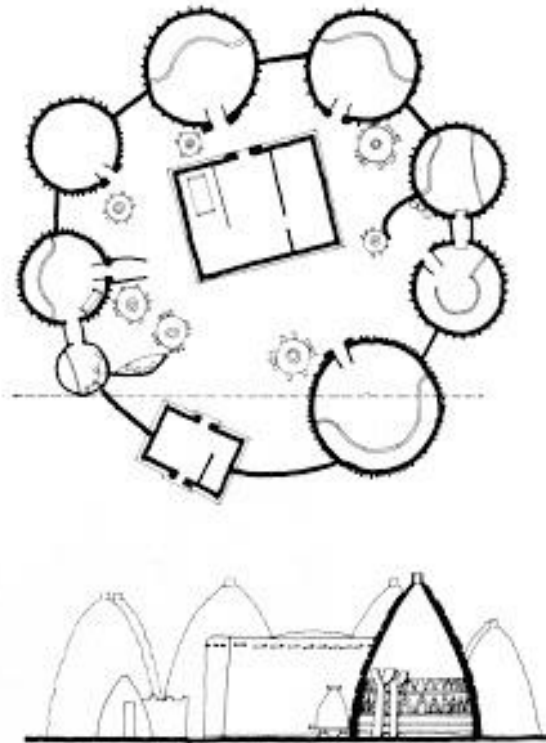




MOSES MABHIDA
GMP ESTADIO

OPERACIÓN 2
RELACION CON EL CENTRO





CASTILLO CELTA

OPERACIÓN 2
RELACION CON EL CENTRO



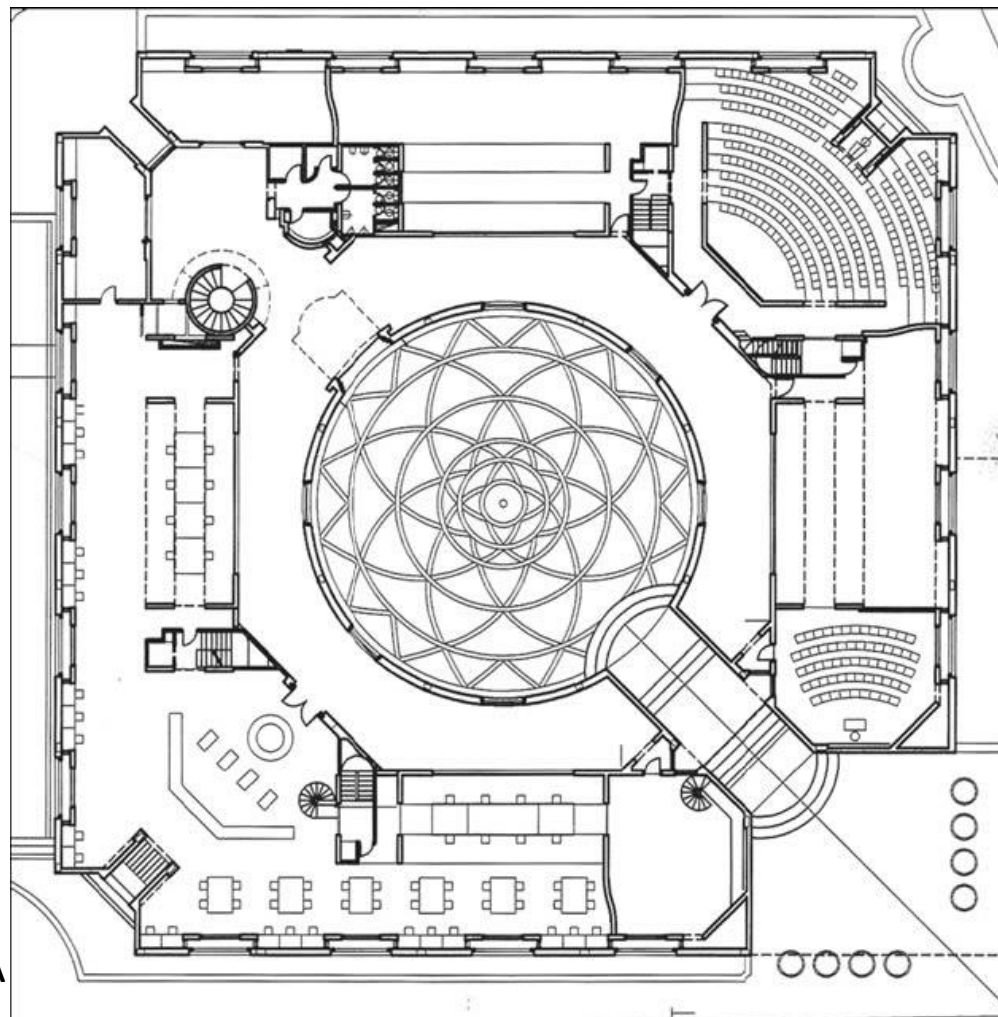
NORMAN FOSTER
SEDE APPLE – CALIF. - USA

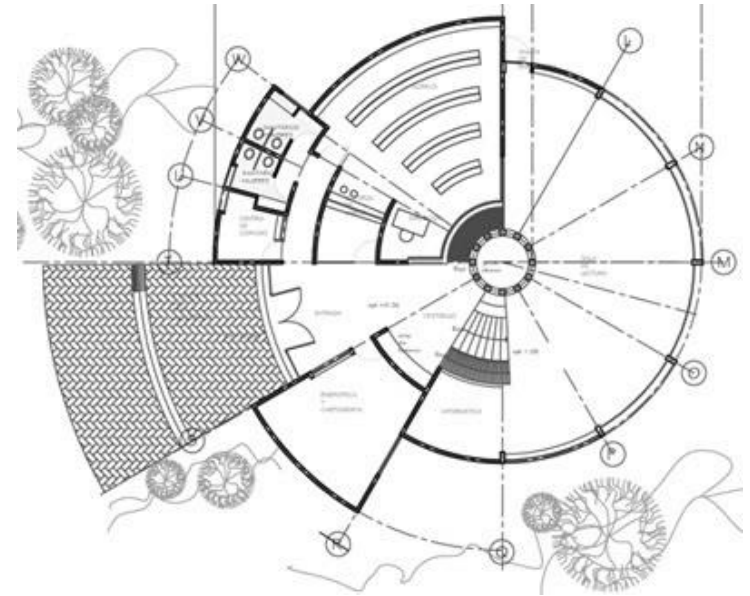
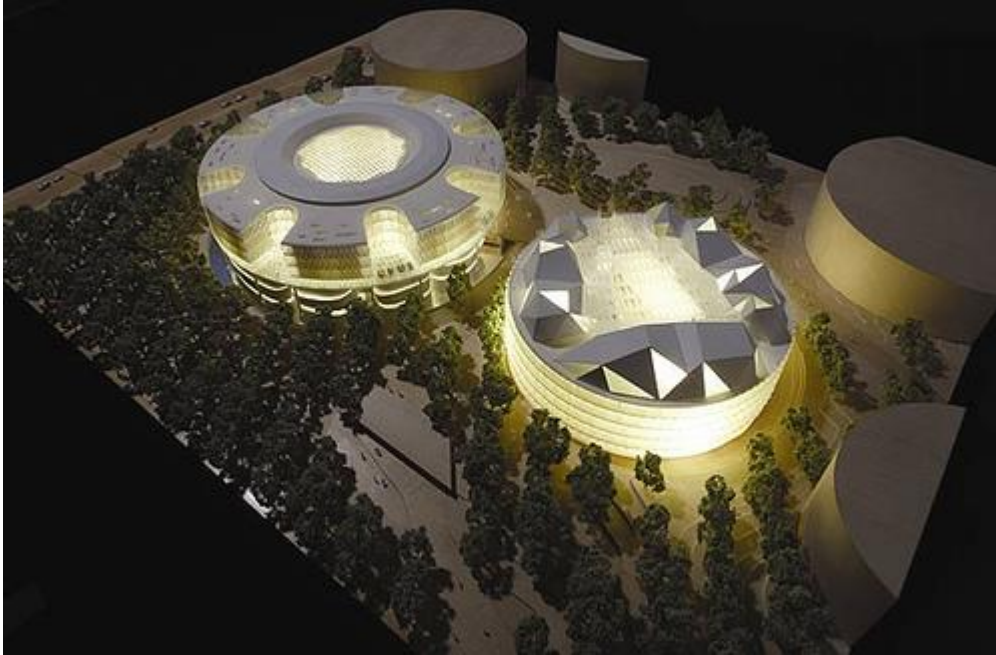
OPERACIÓN 2
RELACION CON EL CENTRO



R. SALMONA
ARCHIVO NACIONAL DE LA REPUBLICA
COLOMBIA

OPERACIÓN 2
RELACION CON EL CENTRO



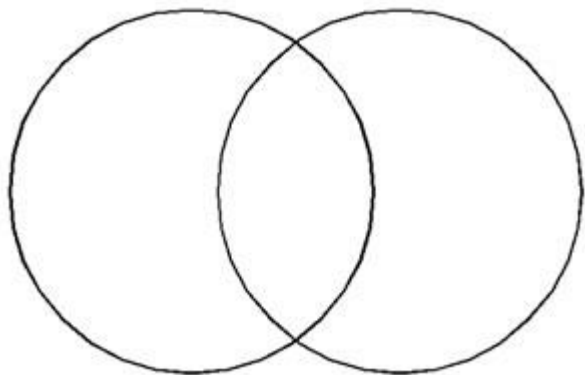


NORMAN FOSTER
SEDE APPLE – CALIF. - USA

OPERACIÓN 2
RELACION CON EL CENTRO

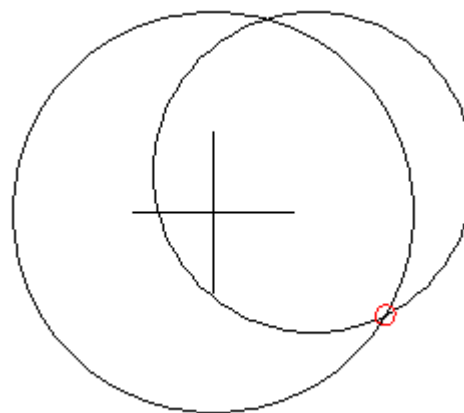






3

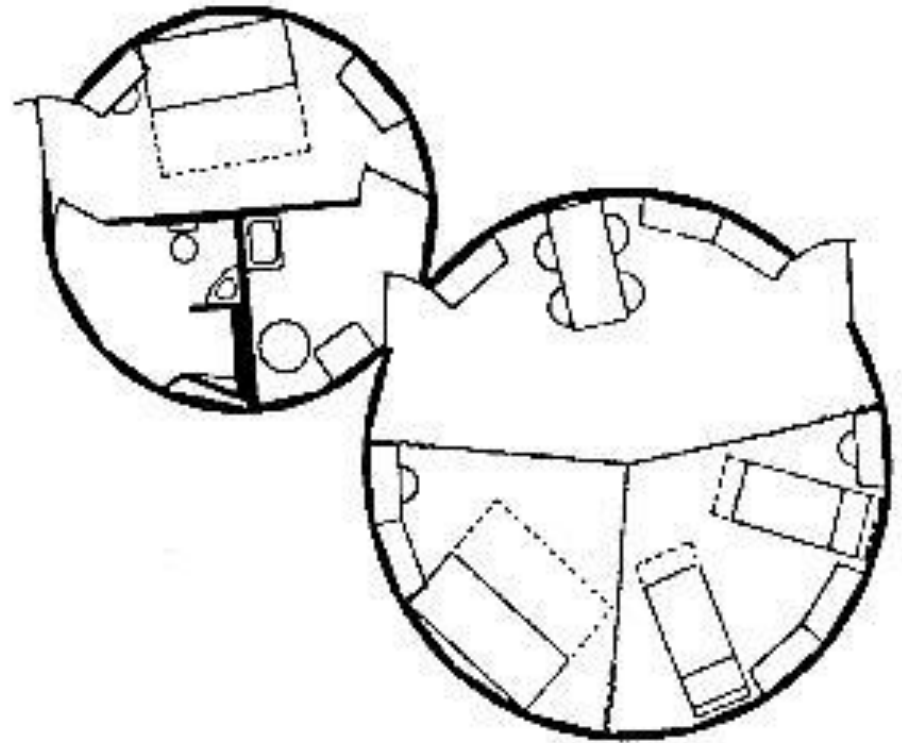
**OPERACIÓN 3
BISECCION DEL CIRCULO**

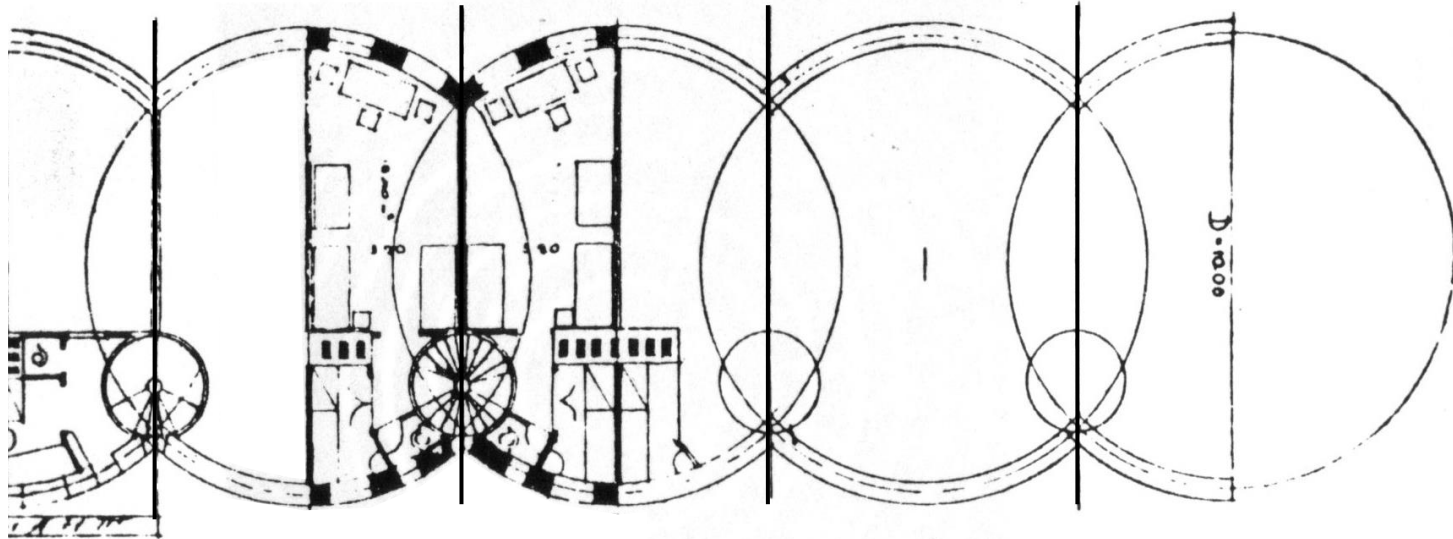




KONSTANTIN MELNIKOV
CASA – MOSCU 1929

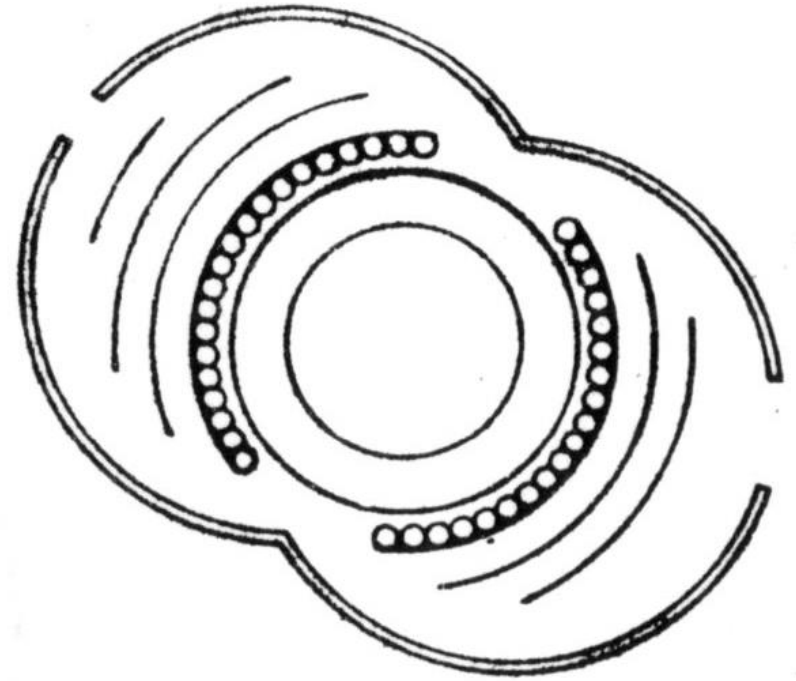
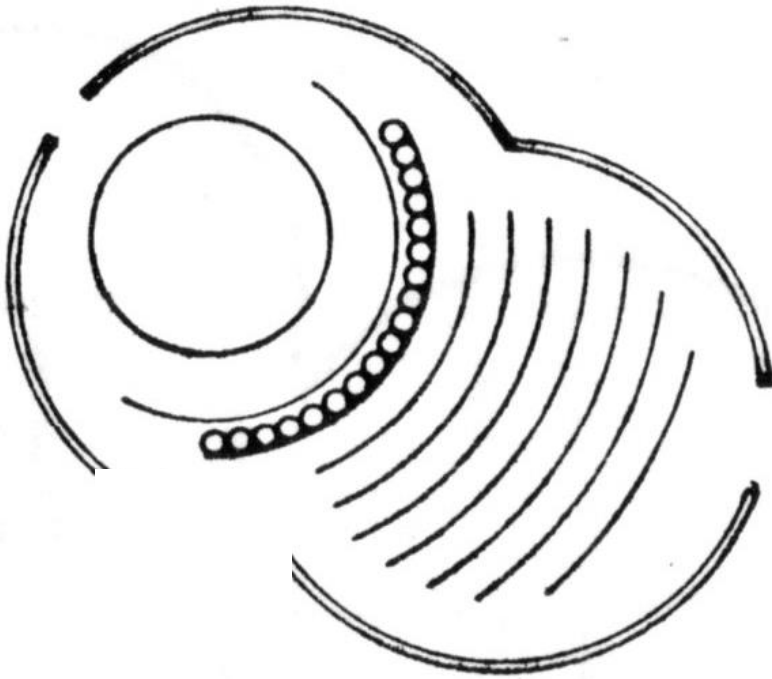
**OPERACIÓN 3
BISECCION DEL CIRCULO**





KONSTANTIN MELNIKOV
CASAS EN HILERA – MOSCU 1929

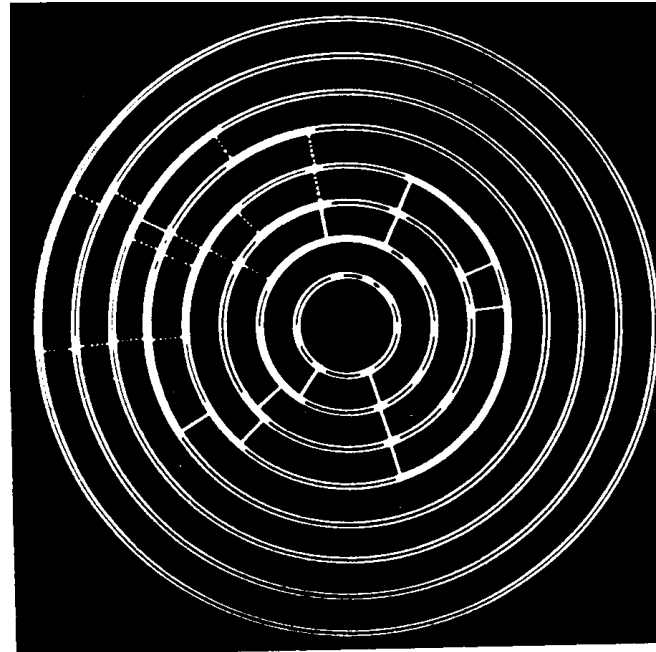
OPERACIÓN 3
BISECCION DEL CIRCULO



ADOLPH STILLER
AYUNTAMIENTO LASSEE

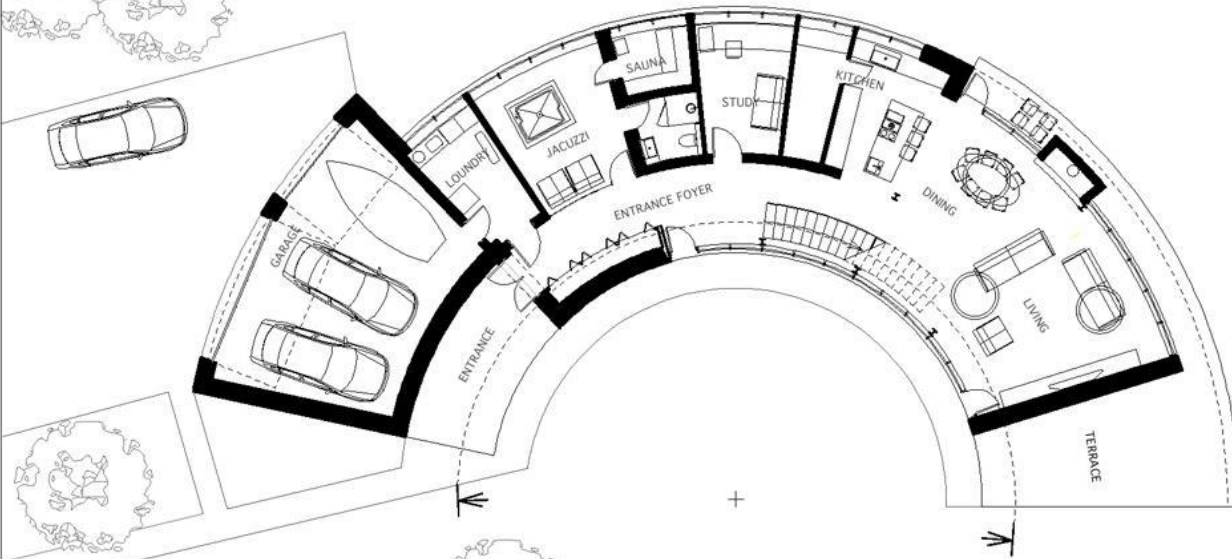
OPERACIÓN 3
BISECCION DEL CIRCULO





4

OPERACIÓN 4
ALTERACIONES Y CORTES DE LA LINEA
CIRCULAR

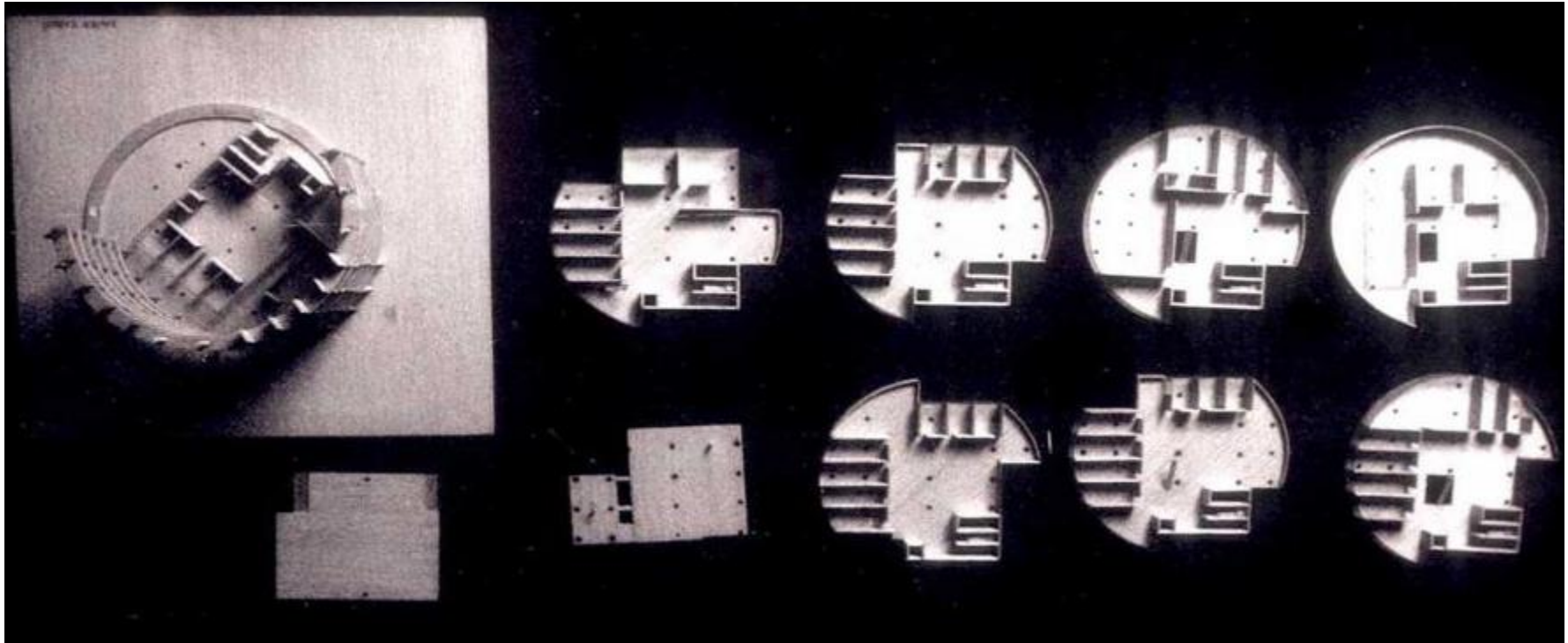


GROUND FLOOR PLAN M 1:150 0 1m 2m

NAMAS KACERGINEJE FAMILY HOUSE IN KACERGINE

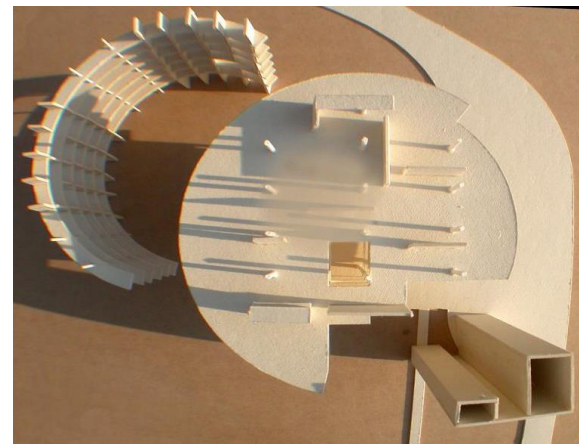
**OPERACIÓN 4
ALTERACIONES Y CORTES DE LA LINEA
CIRCULAR**

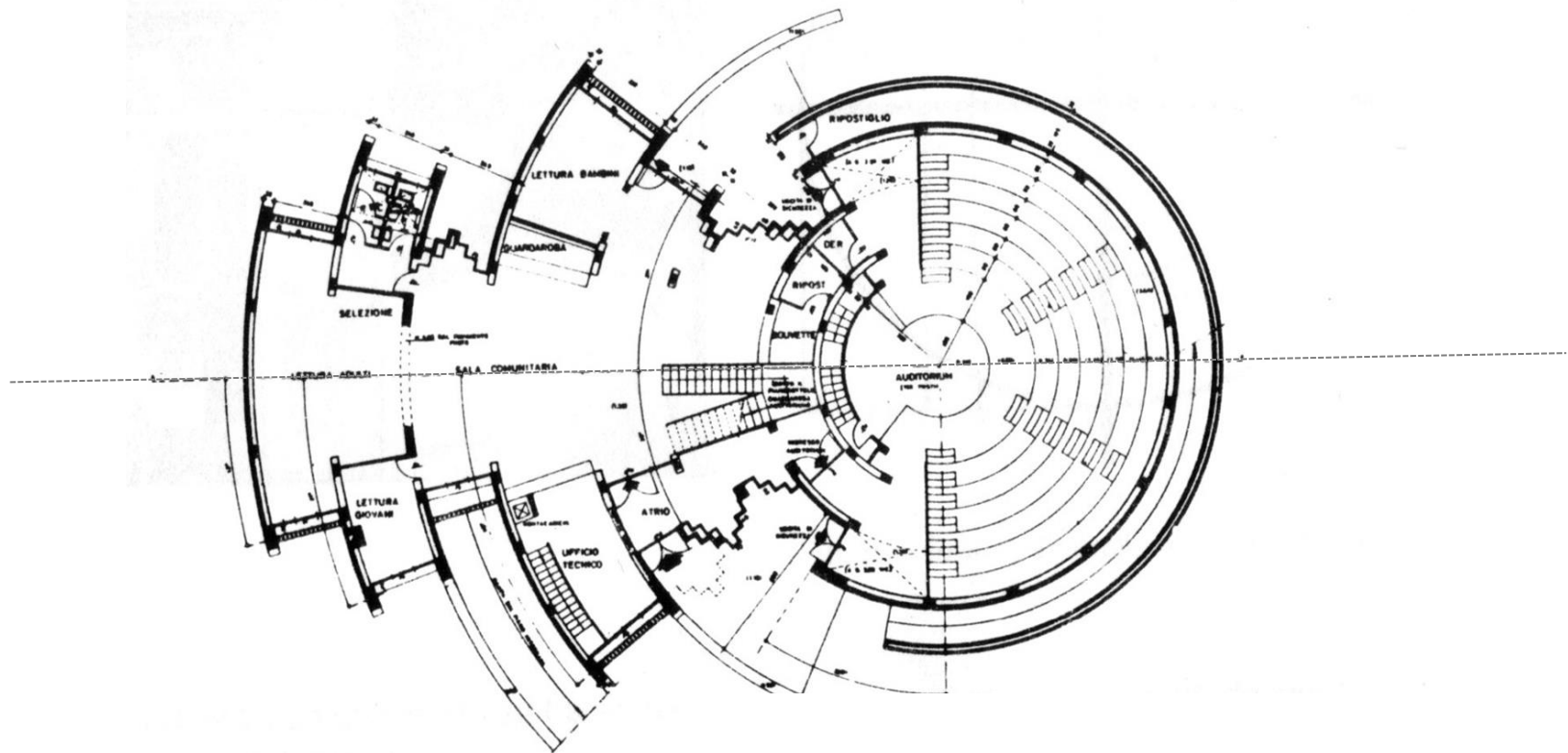




LE CORBUSIER
EMBAJADA FRANCESA BRASILIA

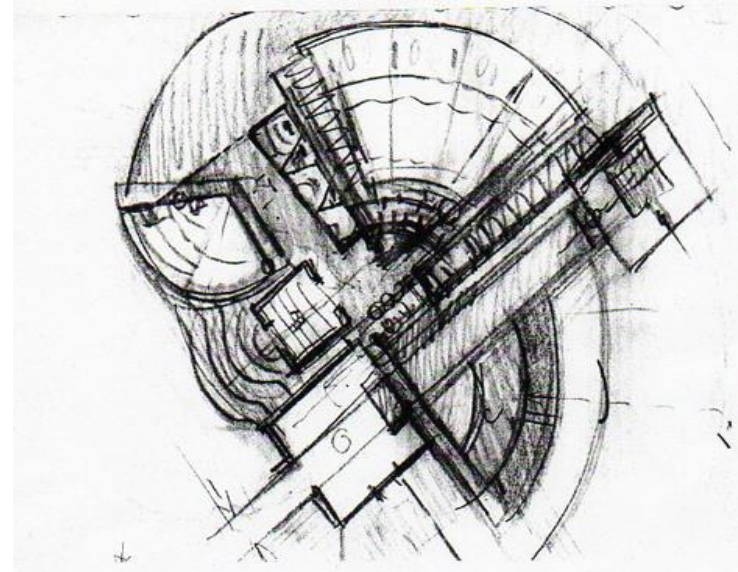
OPERACIÓN 4
ALTERACIONES Y CORTES DE LA LINEA
CIRCULAR





PAOLO PORTOGHESI
CENTRO CULTURAL AVEZZANO
1970

OPERACIÓN 4
ALTERACIONES Y CORTES DE LA LINEA
CIRCULAR

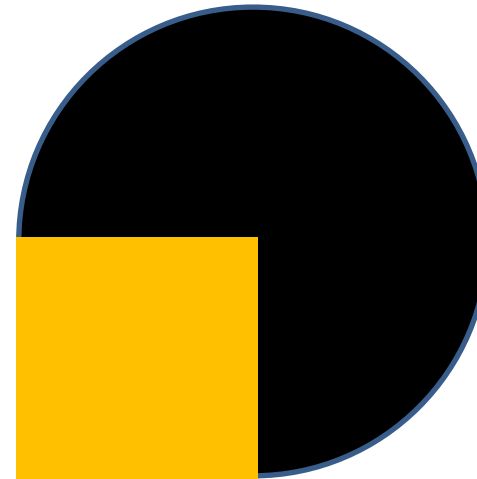
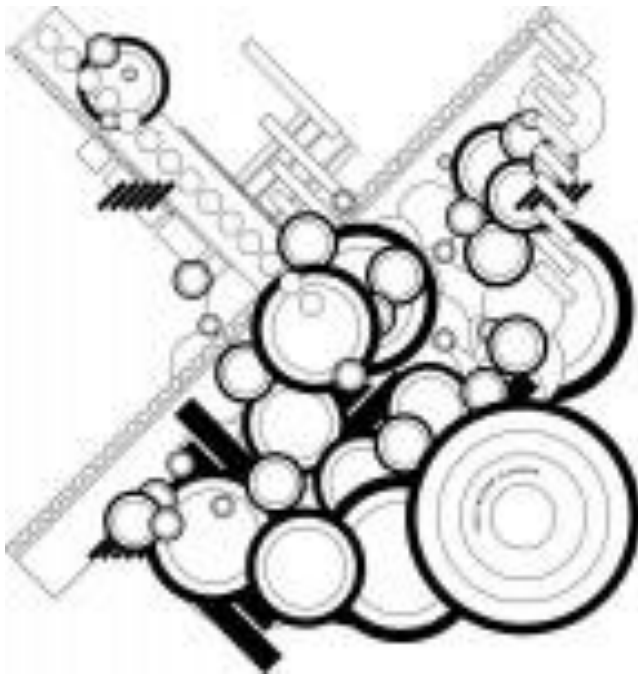


R. SALMONA
BIBLIOTECA VIRGILIO BARCO
COLOMBIA

OPERACIÓN 4
ALTERACIONES Y CORTES DE LA LINEA
CIRCULAR







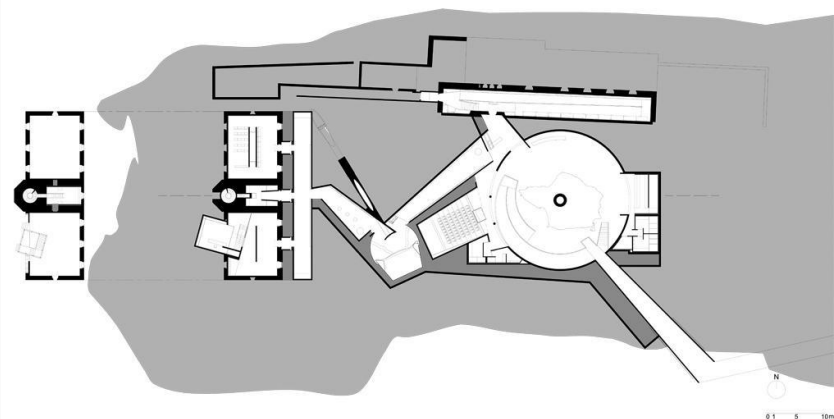
5

OPERACIÓN 5
APROXIMACION DEL CIRCULO A OTRAS
FORMAS



NUNO RIBEIRO LOPES
VOLCANO INTERPRETATION CENTER
FAYAL ISLAND - AZORES, PORTUGAL
2009

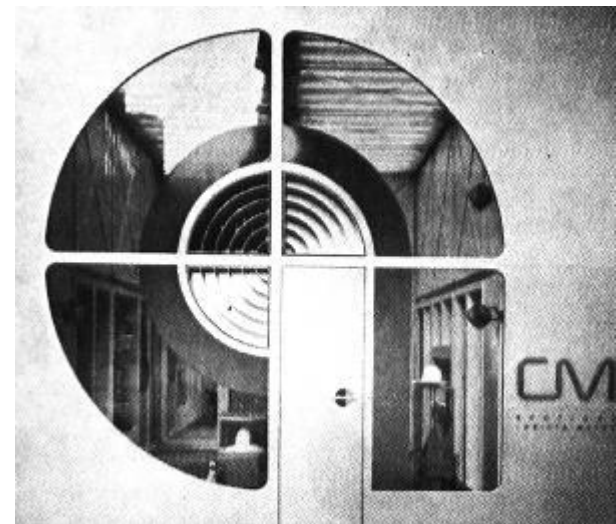
**OPERACIÓN 5
APROXIMACION DEL CIRCULO A OTRAS
FORMAS**

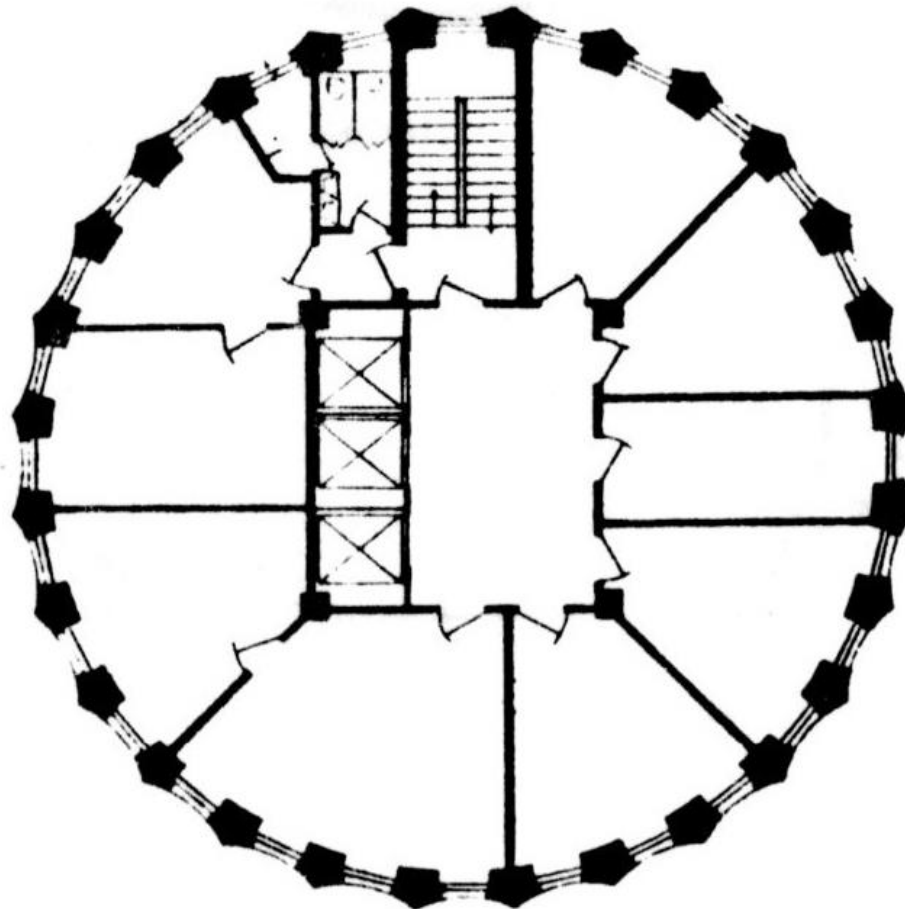




HANS HOLLEIN
BOUTIQUE CM VIENA

OPERACIÓN 5
APROXIMACION DEL CIRCULO A OTRAS
FORMAS





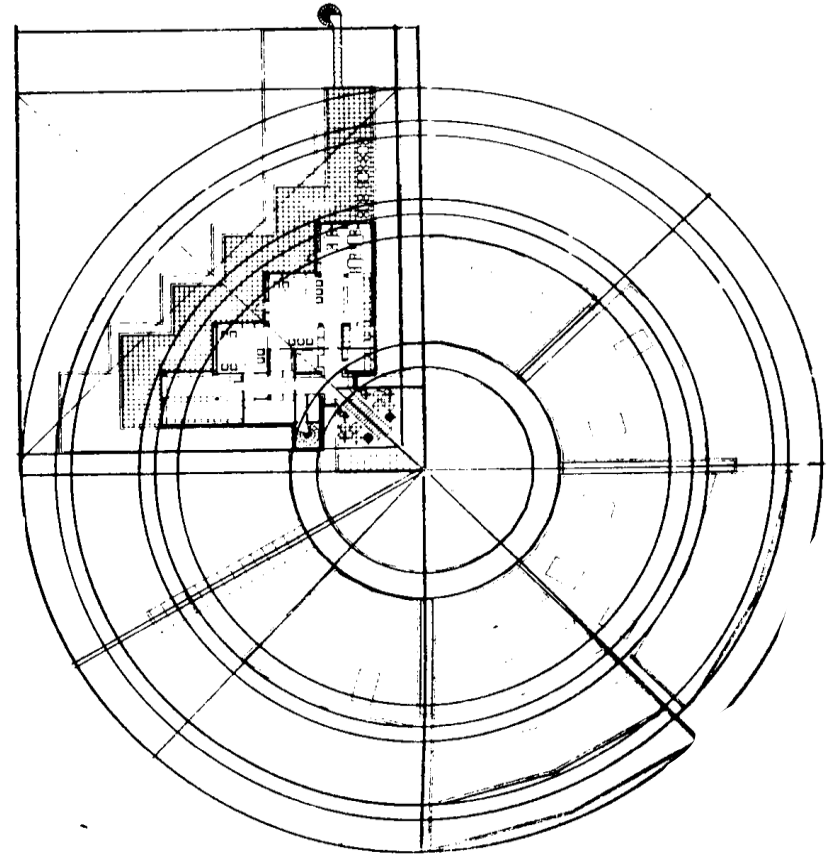
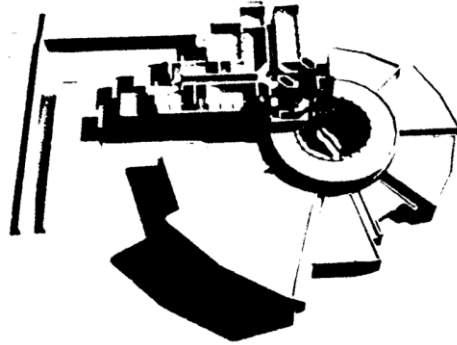
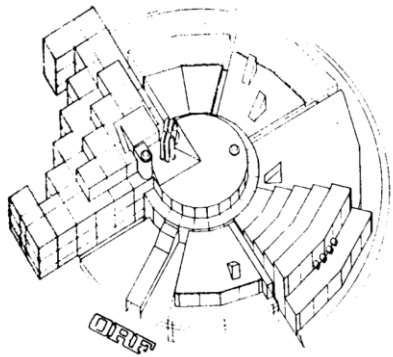
ADOLPH LOOS
TRIBUNE TOWER
PARIS 1922

OPERACIÓN 5
APROXIMACION DEL CIRCULO A OTRAS
FORMAS



ALDEA CHINA

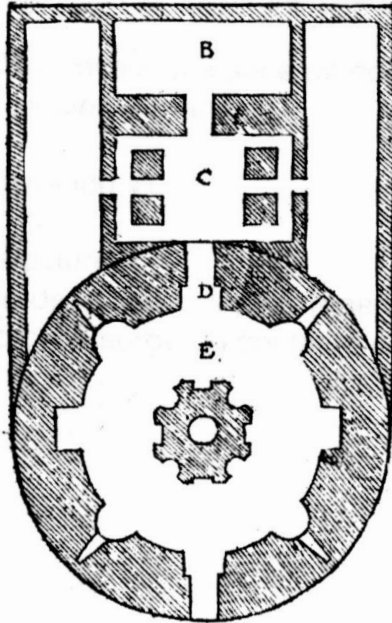
OPERACIÓN 5
APROXIMACION DEL CIRCULO A OTRAS
FORMAS



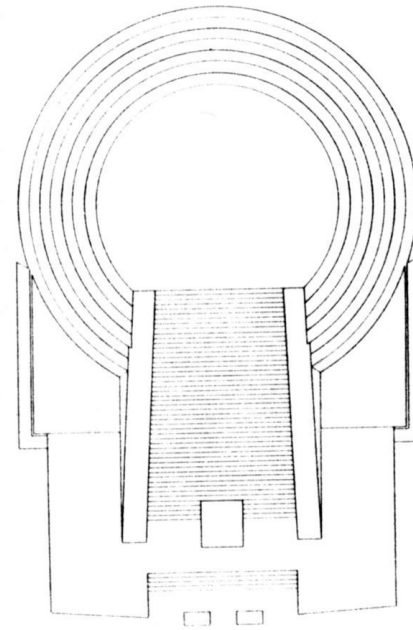
GUSTAVE PEICHL

ESTUDIOS RADIODIFUSORA AUSTRIA SALSBURGO -
1972

OPERACIÓN 5
APROXIMACION DEL CIRCULO A OTRAS
FORMAS

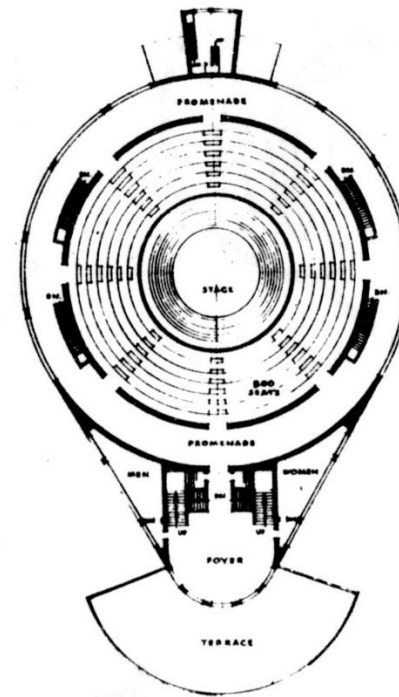
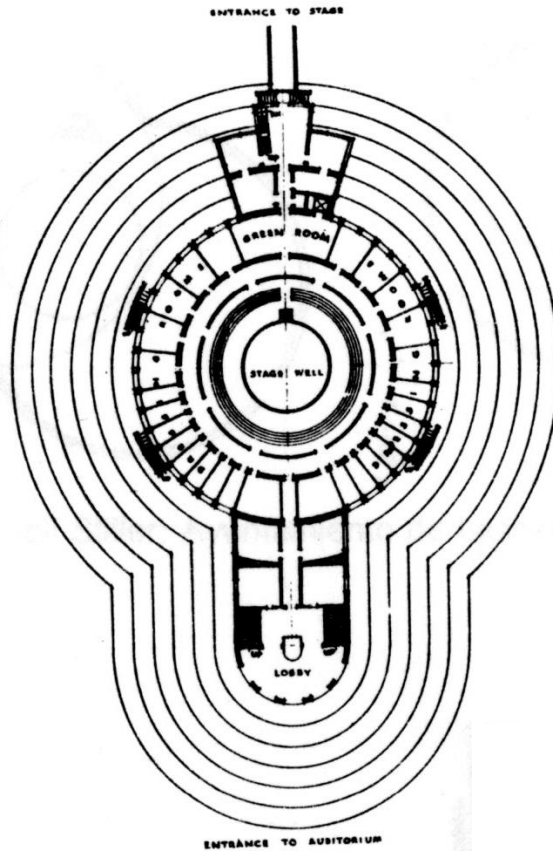


SERLIO
BOLOÑA ITALIA
1580



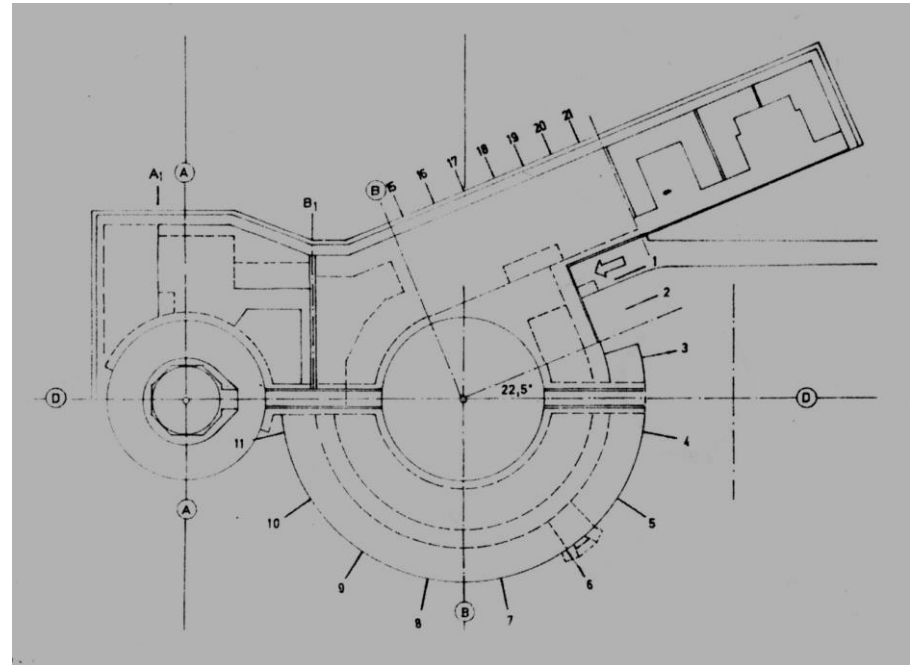
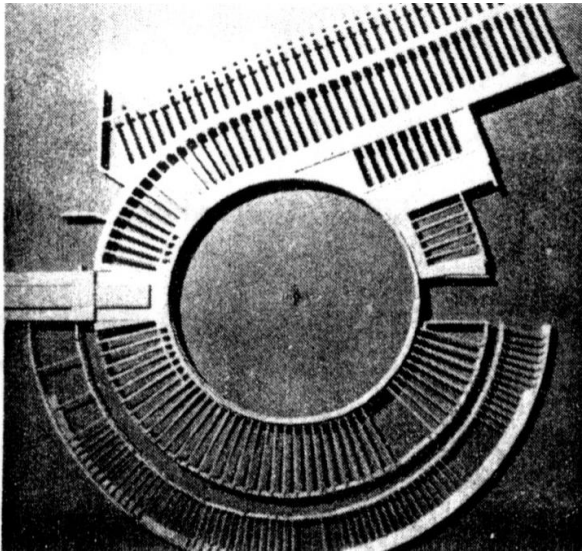
PIRAMIDE CIRCULAR AZTECA
CALIXTLAHUACA

OPERACIÓN 5
APROXIMACION DEL CIRCULO A OTRAS
FORMAS



NORMAN BEL GEDDES
TEATRO No. 14
1922

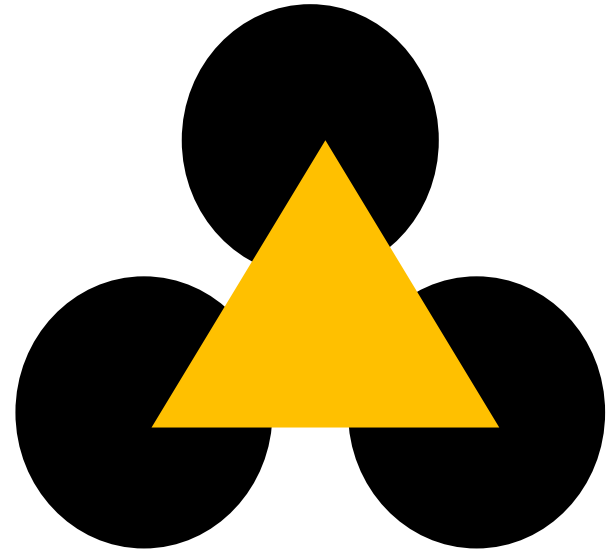
OPERACIÓN 5
APROXIMACION DEL CIRCULO A OTRAS
FORMAS



GUSTAVE PEICHL
TERMINAL TERRESTRE
AFLENZ
1979

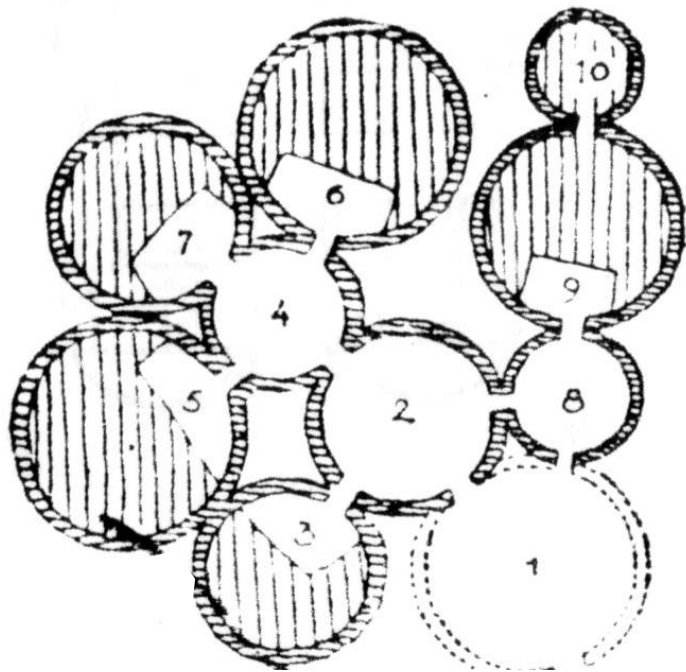
OPERACIÓN 5
APROXIMACION DEL CIRCULO A OTRAS
FORMAS





6

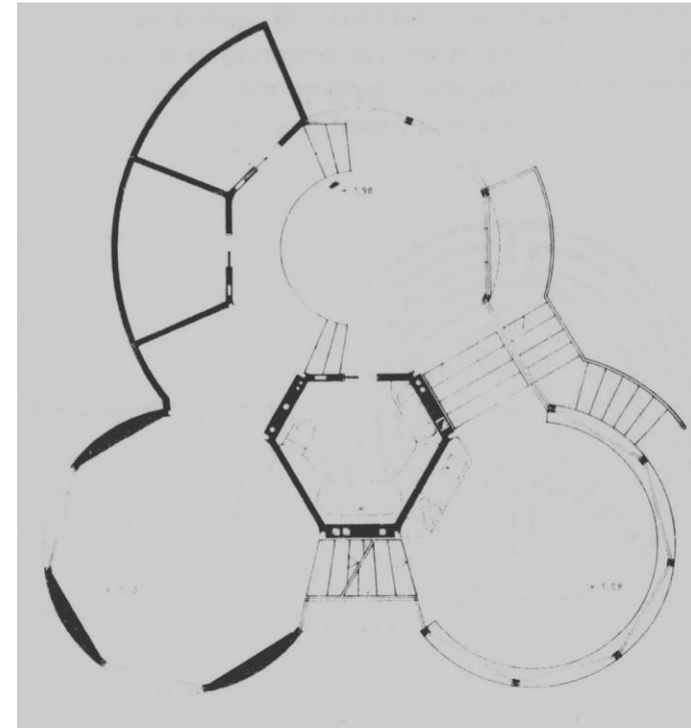
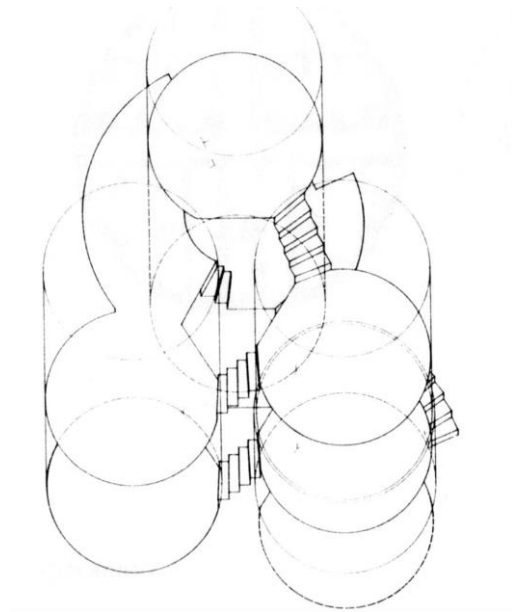
OPERACIÓN 6
CIRCULOS EN RELACION MUTUA



SISTEMA DE IGLUES ESQUIMALES



OPERACIÓN 6
CIRCULOS EN RELACION MUTUA

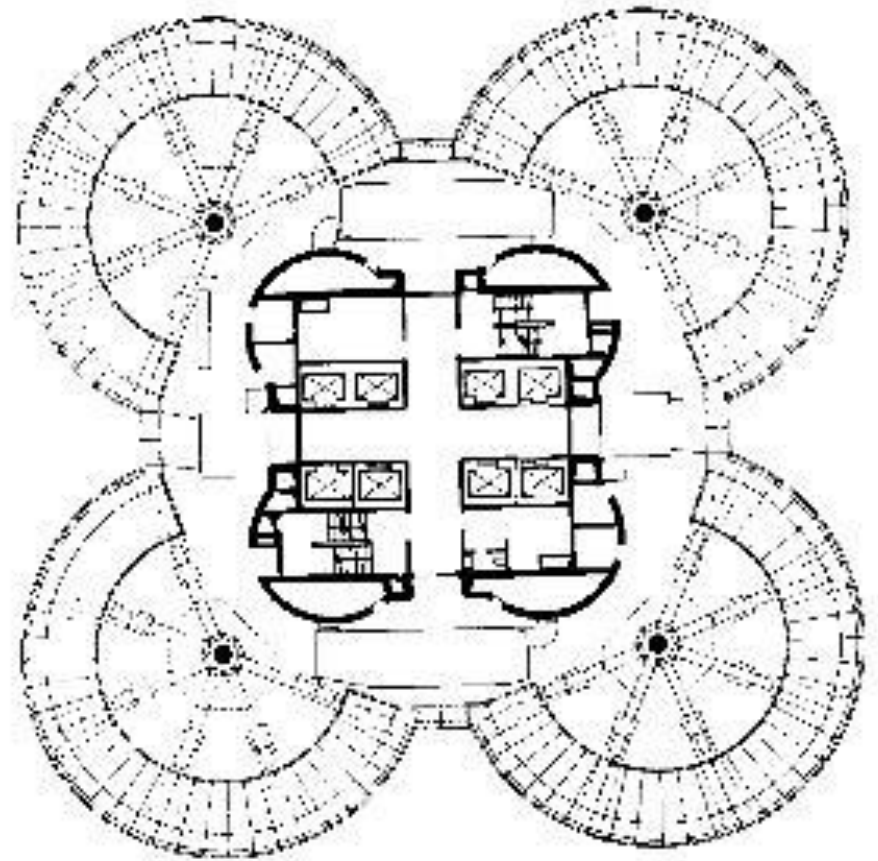


HELMUT HEMPEL
CASAS REDONDAS
1970

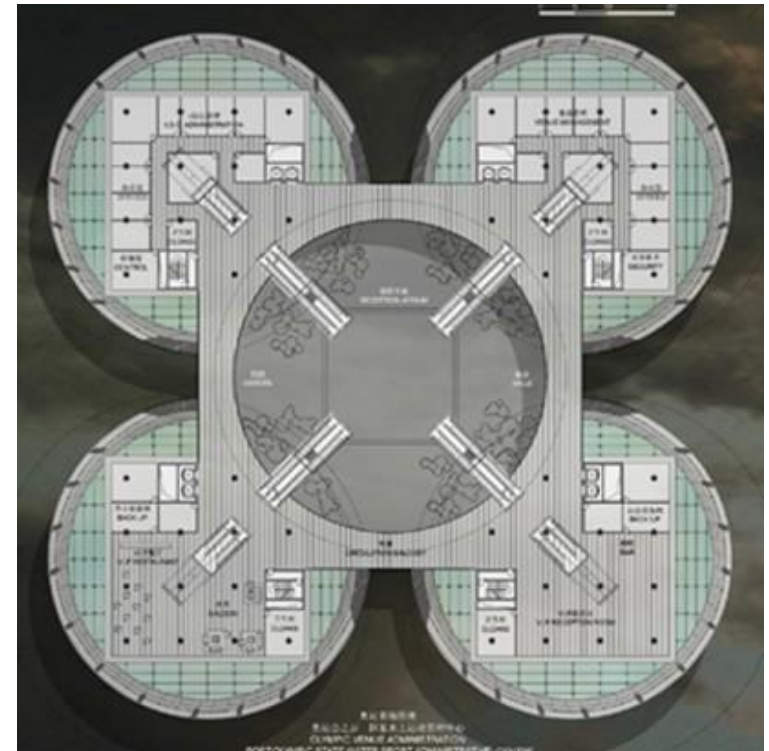
OPERACIÓN 6
CIRCULOS EN RELACION MUTUA



KARL SCHWANZER
EDIFICIO BMW
MUNICH
1973



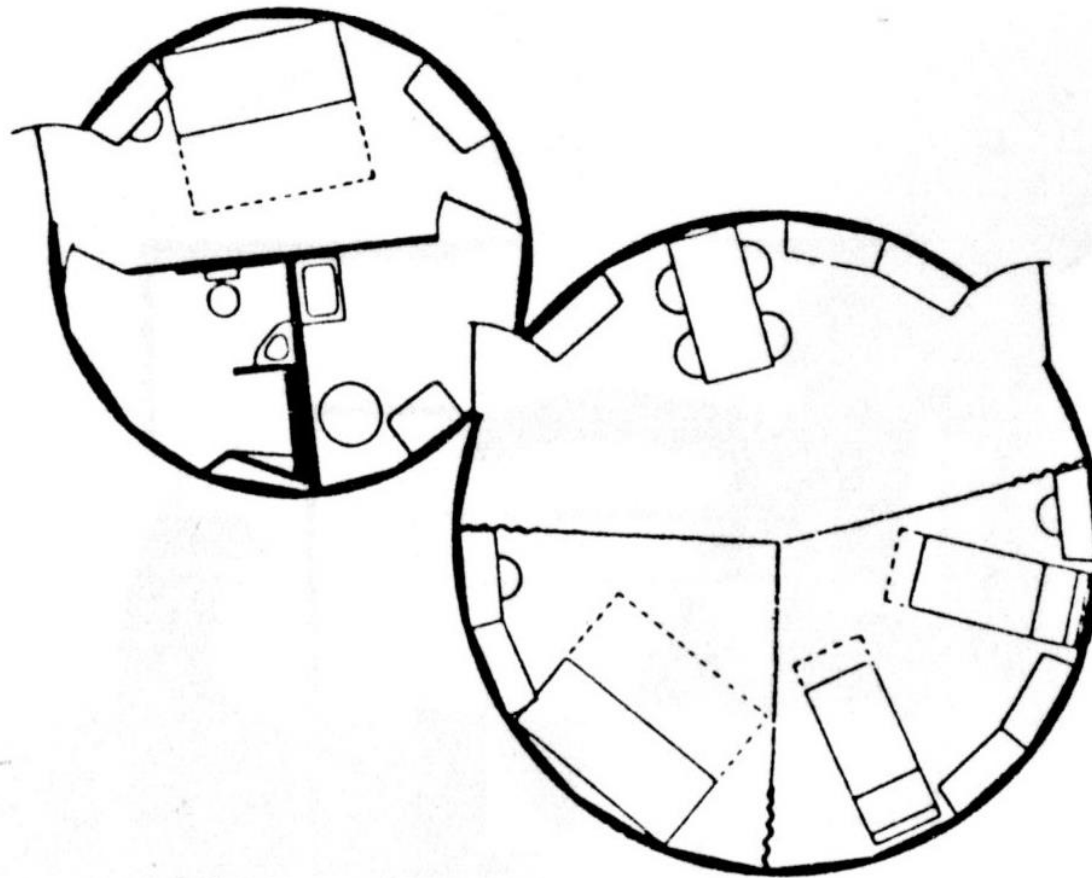
OPERACIÓN 6
CIRCULOS EN RELACION MUTUA



RICARDO BOFILL

OPERACIÓN 6
CIRCULOS EN RELACION MUTUA





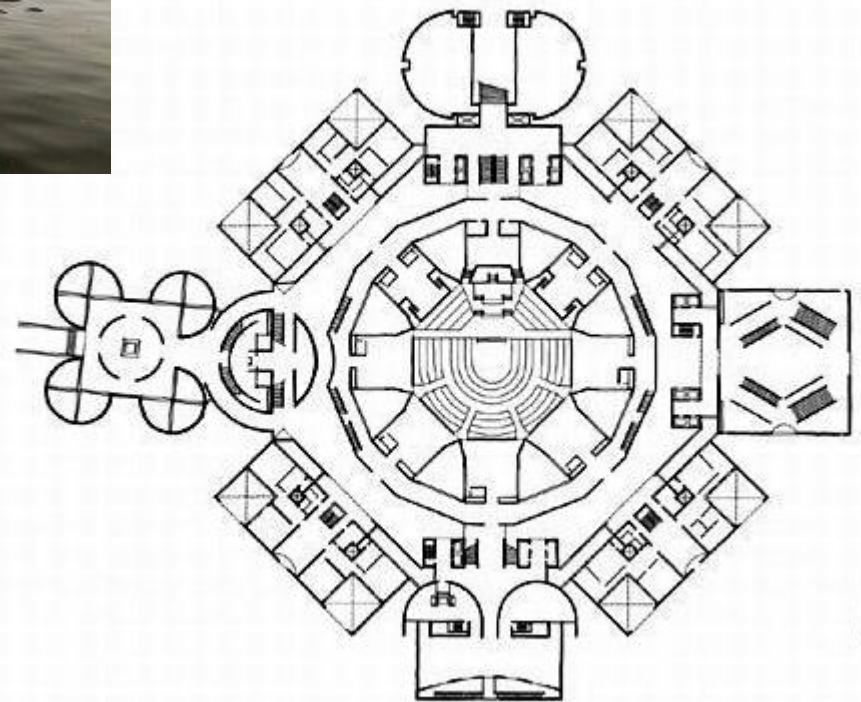
RICHARD BUCKMINSTER FULLER
GRUPO GEMELO
1940

OPERACIÓN 6
CIRCULOS EN RELACION MUTUA

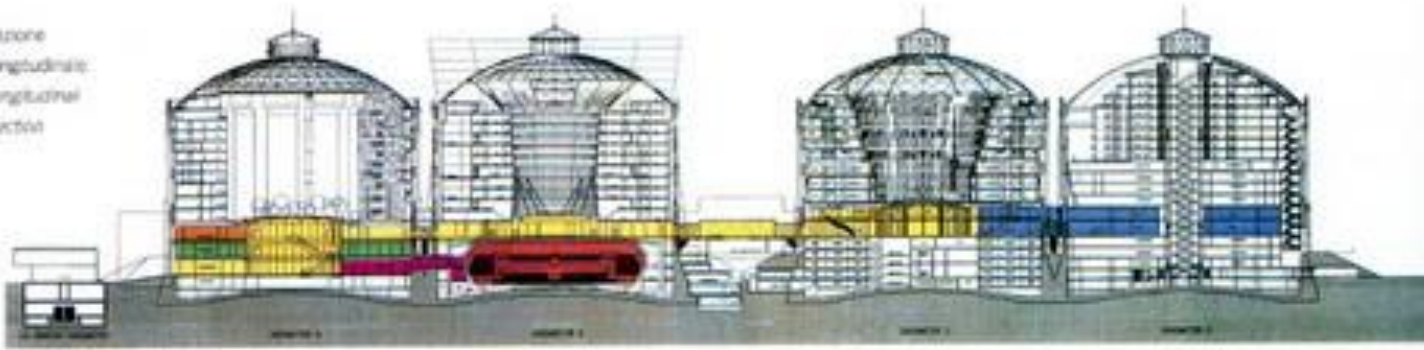


LOUIS KAHN.
BANGLADESH NATIONAL
ASSEMBLY

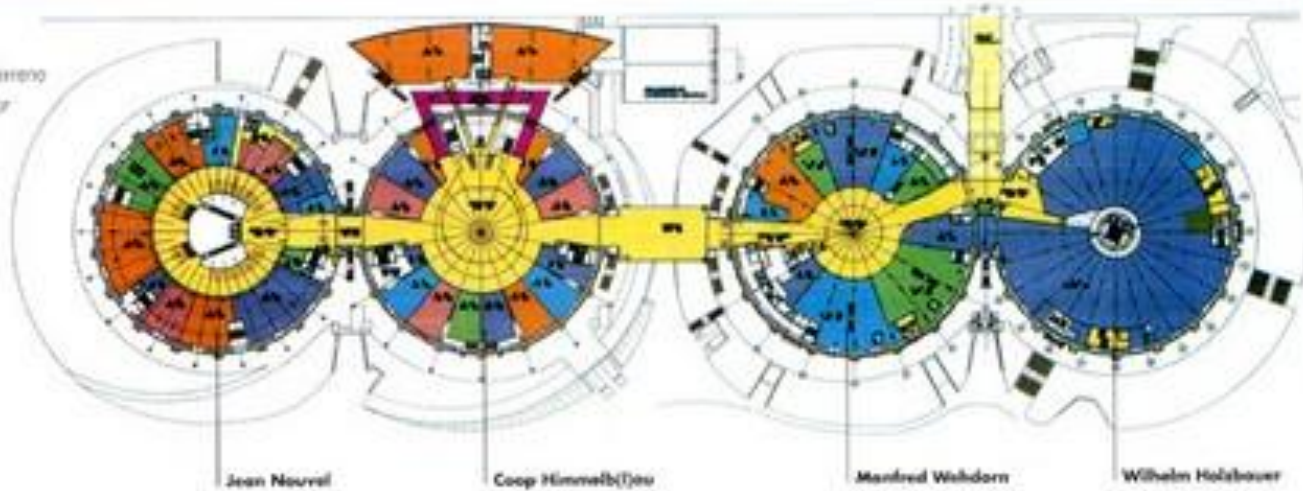
OPERACIÓN 6
CIRCULOS EN RELACION MUTUA



sezione
longitudinale
longitudinal
section



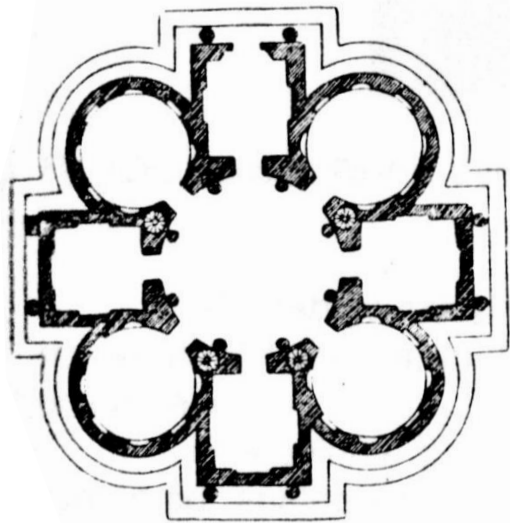
planta
del piano terreno
ground-floor
plan



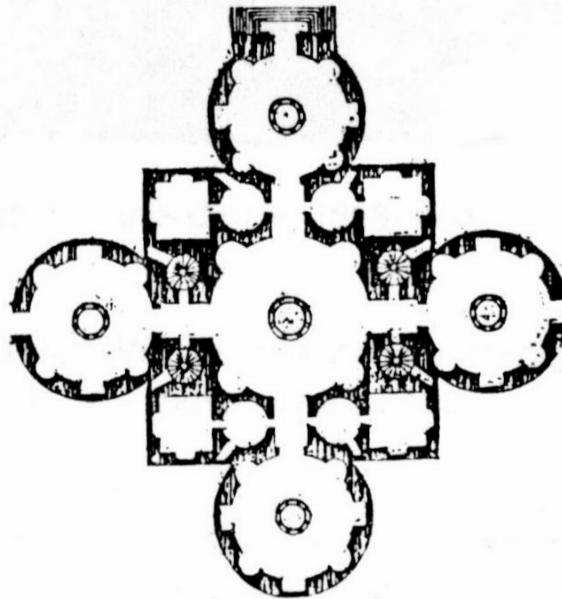
WILHELM HOLZBAUER
GASOMETER VIENA

OPERACIÓN 6
CIRCULOS EN RELACION MUTUA

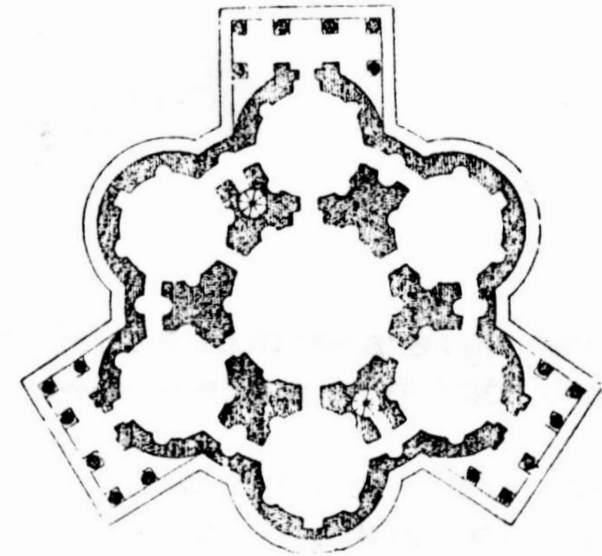




SEPULCRO
ROMANO

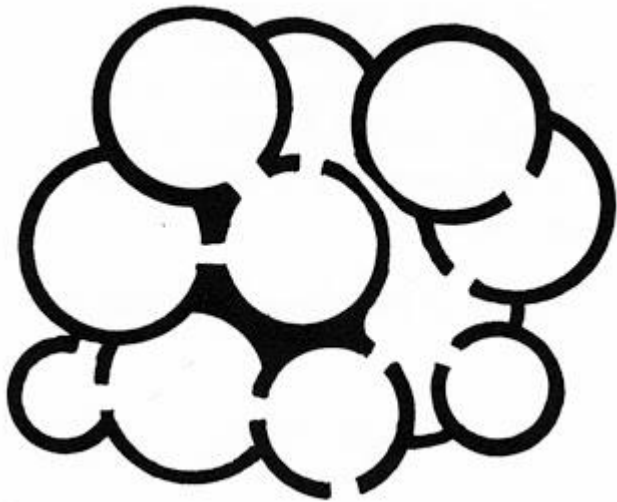


SERLIO
1580

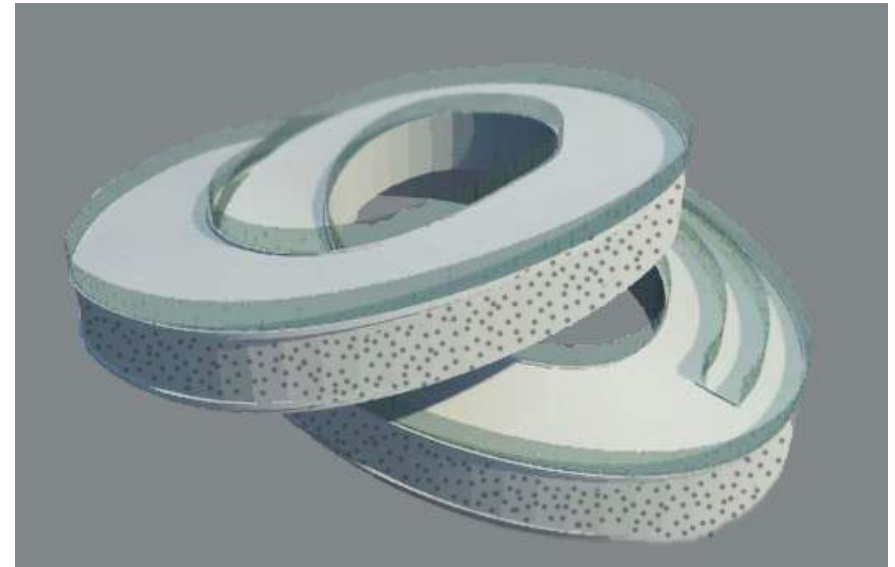


EDIFICIO
ROMANO

OPERACIÓN 6
CIRCULOS EN RELACION MUTUA



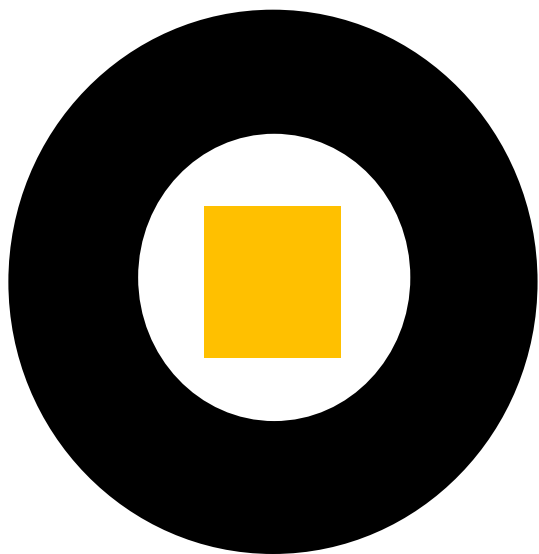
POBLADO SOMOLO



PABELLON DINAMARCA EN
SHANGAI
THE BIG

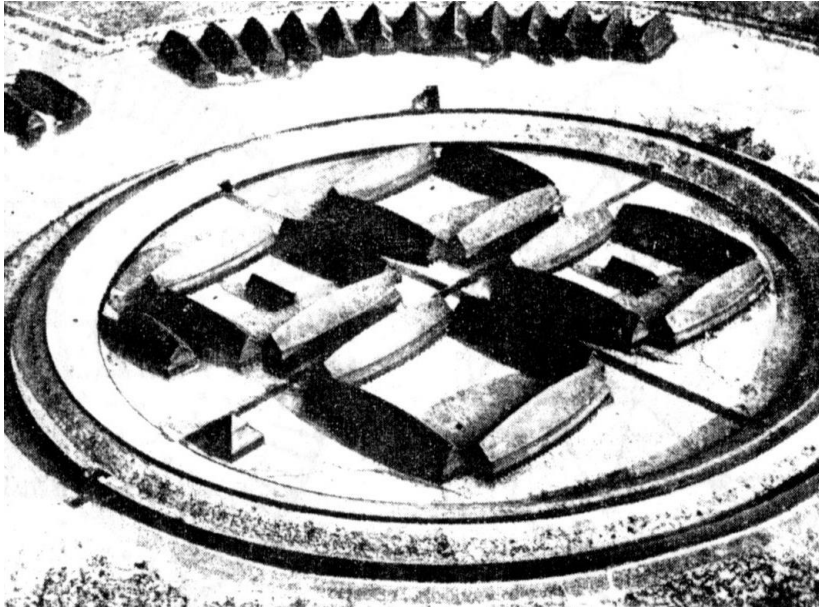
OPERACIÓN 6
CIRCULOS EN RELACION MUTUA



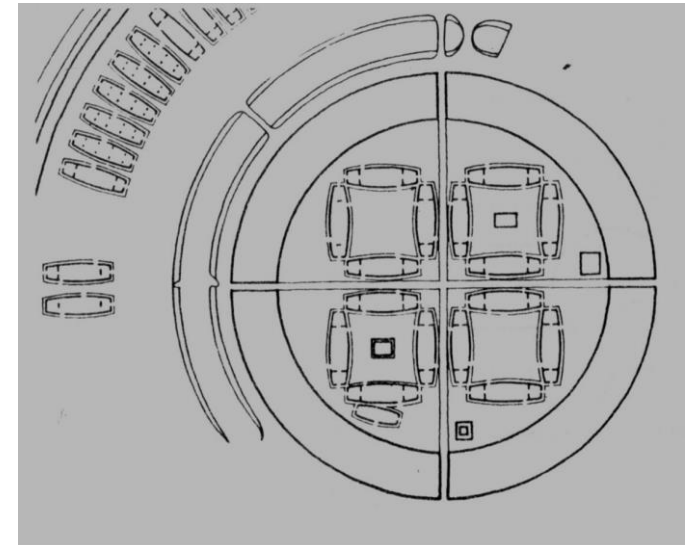


7

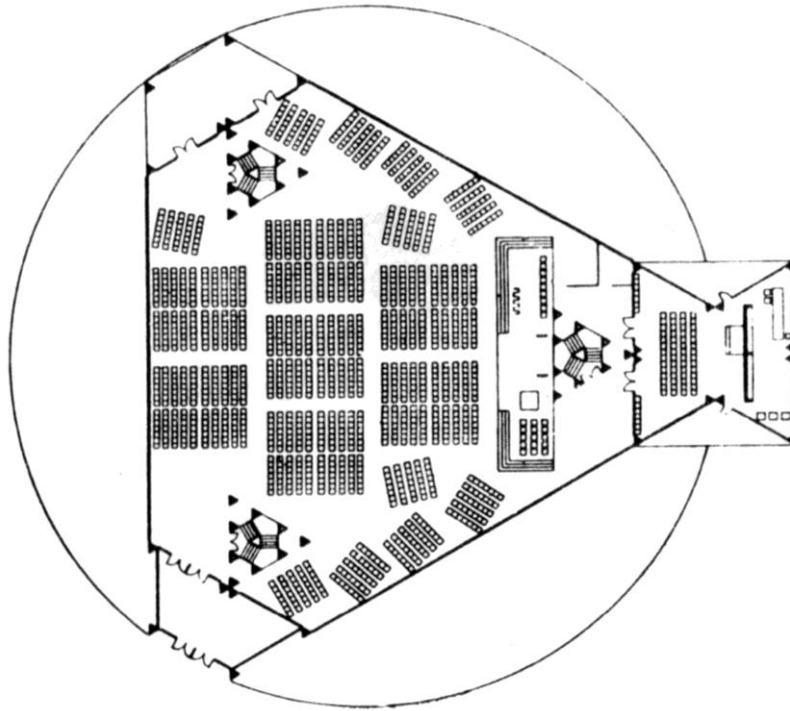
OPERACIÓN 7
INSERCIÓN EN EL CÍRCULO



FORTALEZA ANULAR
NUEVA ZELANDA
1000



OPERACIÓN 7
INSERCIÓN EN EL CÍRCULO

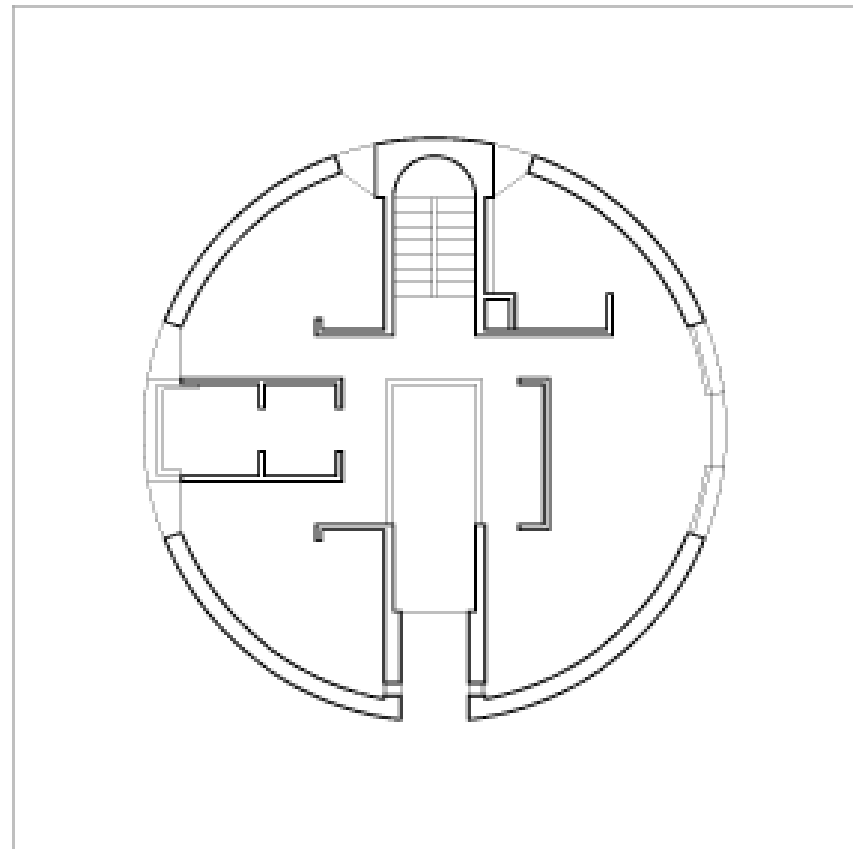


LOUIS KAHN
SINAGOGA ADATH JESORUM
1964

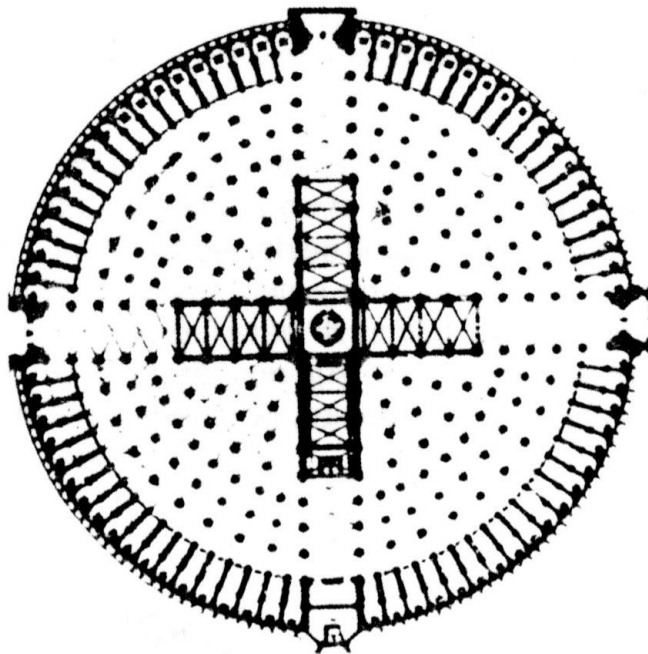
OPERACIÓN 7
INSERCIÓN EN EL CÍRCULO



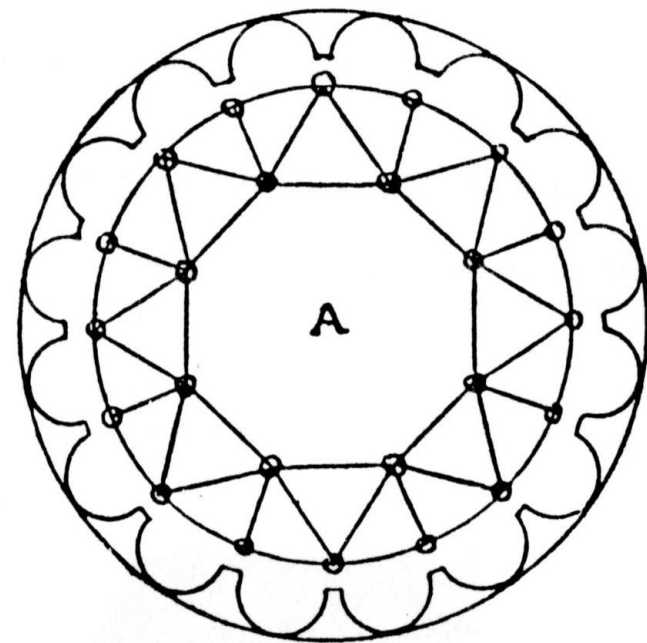
MARIO BOTTA
CASA ROTONDA



OPERACIÓN 7
INSERCIÓN EN EL CÍRCULO

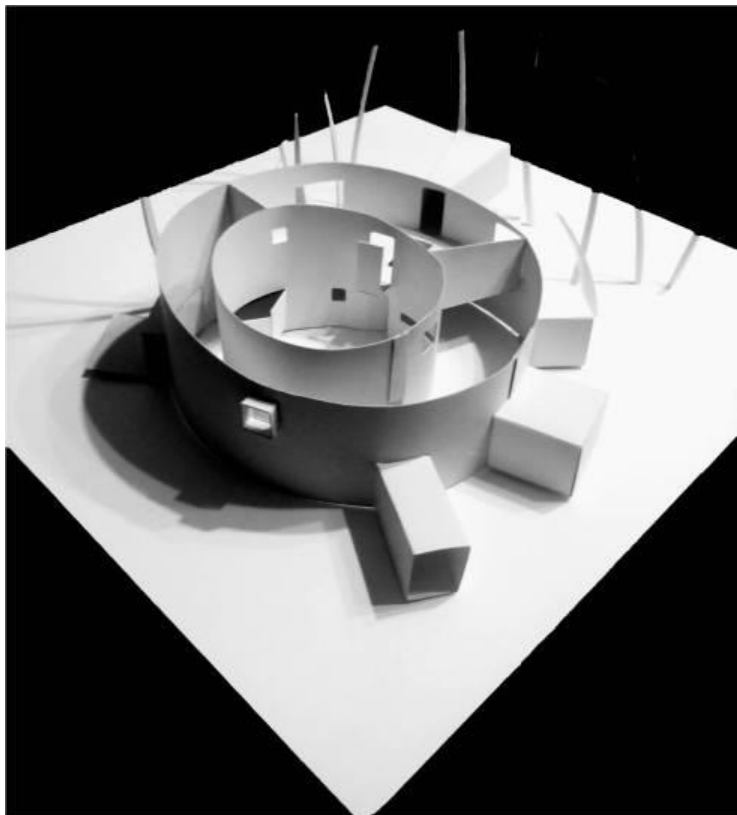


BOISSEREES
RECONSTRUCCION TEMPLO
DEL GRIAL



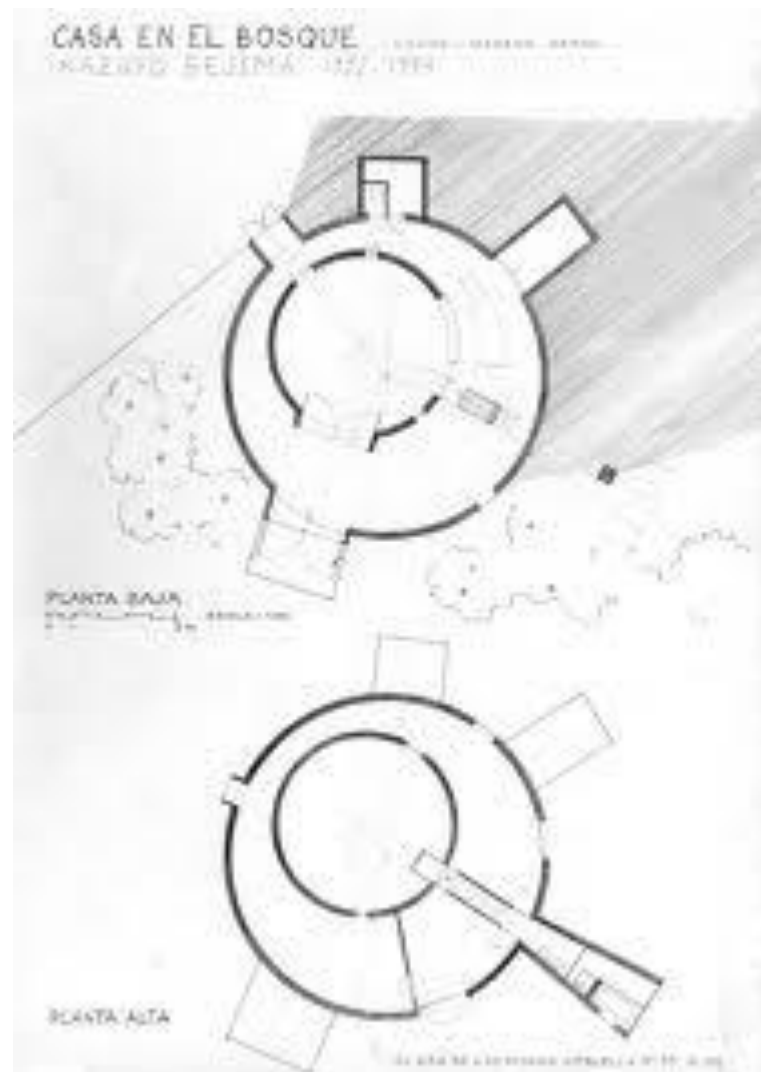
L. DA VINCI
SANTAMARIA PRATICHA
ITALIA

OPERACIÓN 7
INSERCIÓN EN EL CÍRCULO

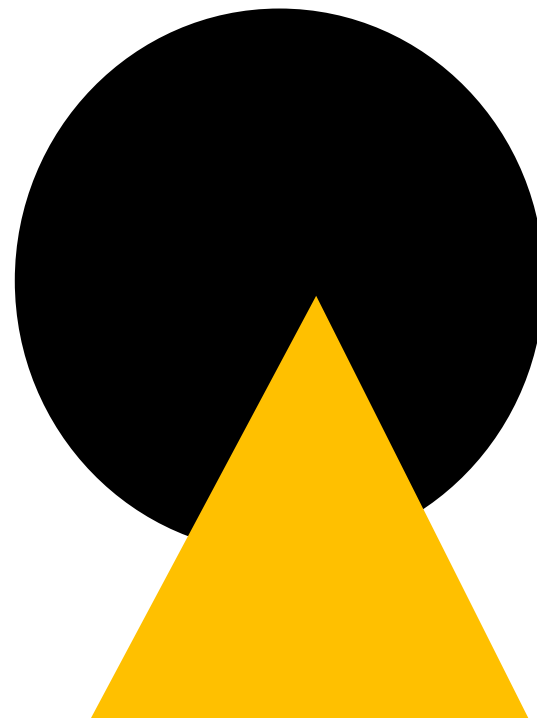
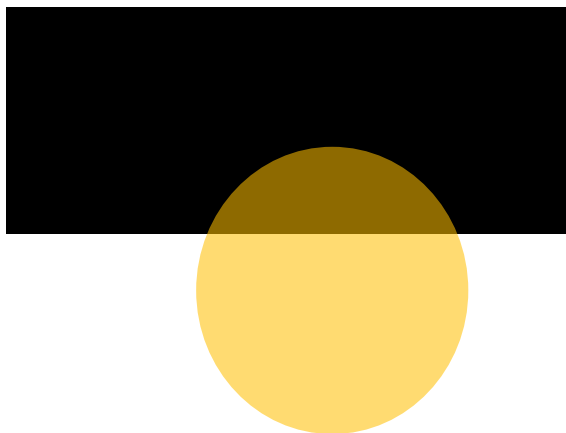


CASA EN EL BOSQUE DE
NAGANO
KASUYO SEJIMA

OPERACIÓN 7
INSERCIÓN EN EL CÍRCULO

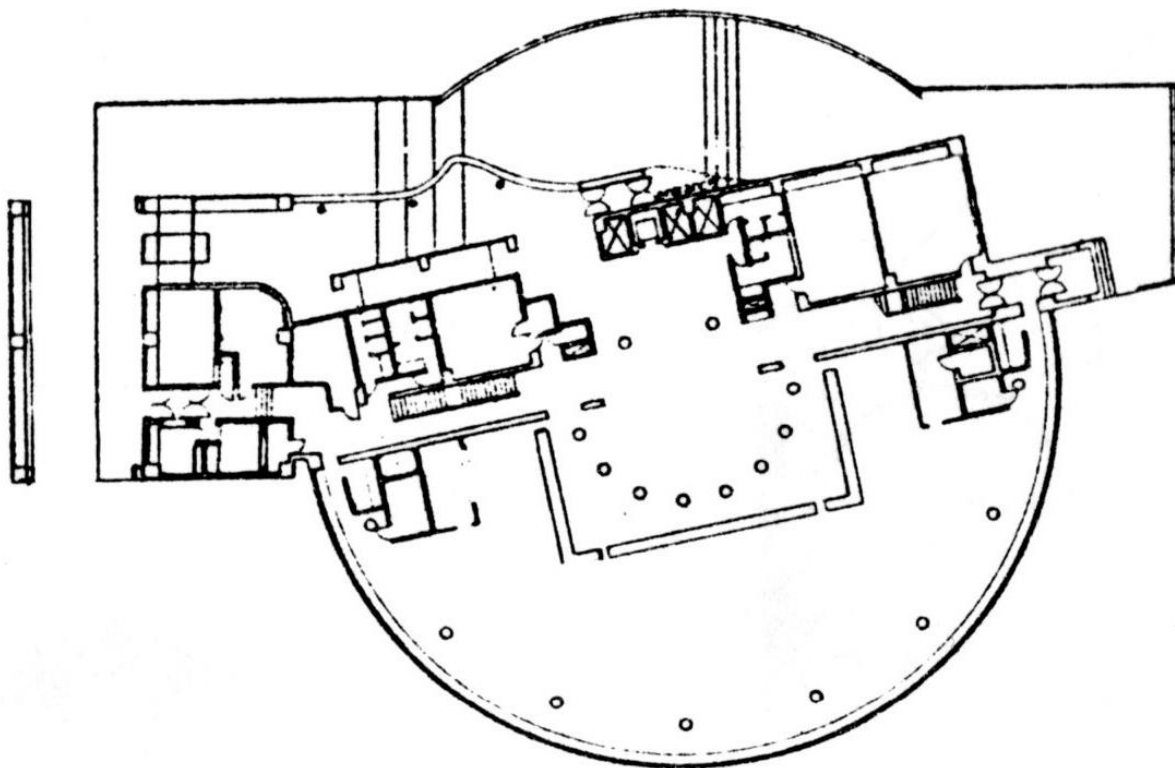






8

OPERACIÓN 8
PENETRACION EN EL CIRCULO



ARATA ISOZAKI
AYUNTAMIENTO JAPON
1979

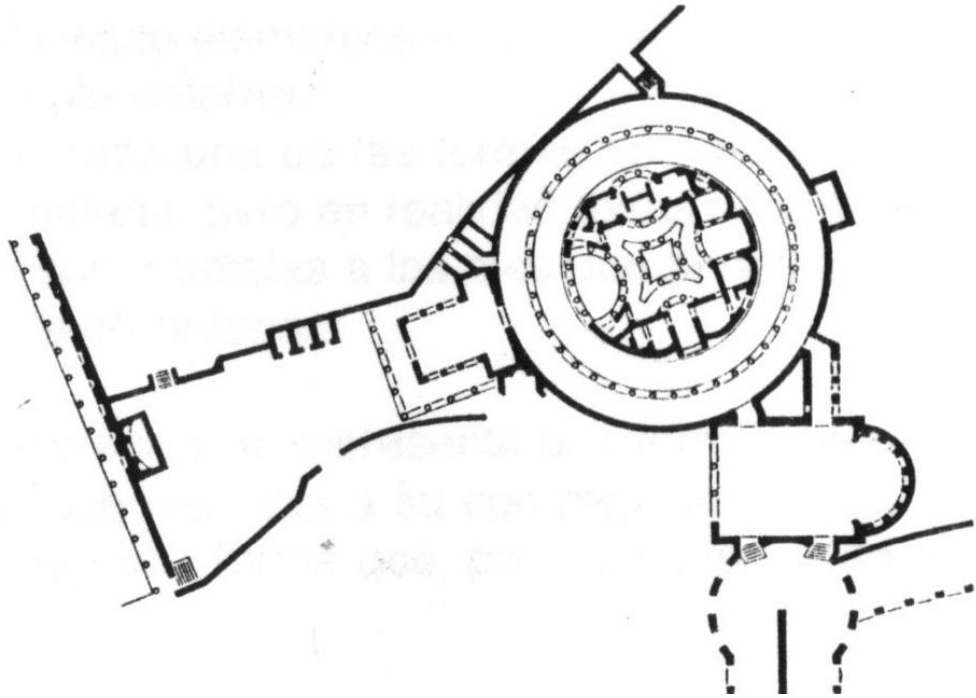
OPERACIÓN 8
PENETRACION EN EL CIRCULO





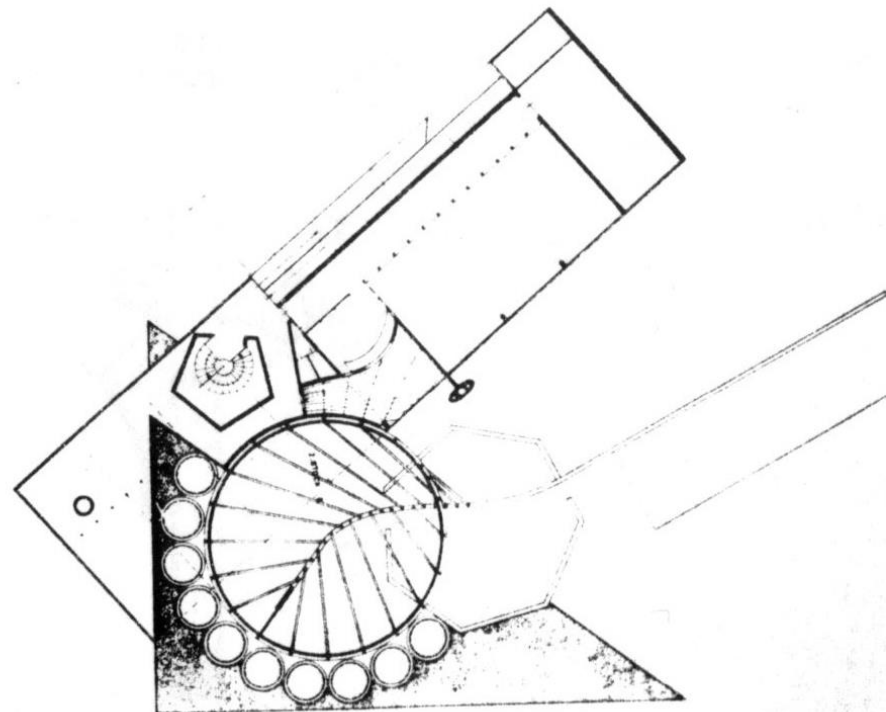
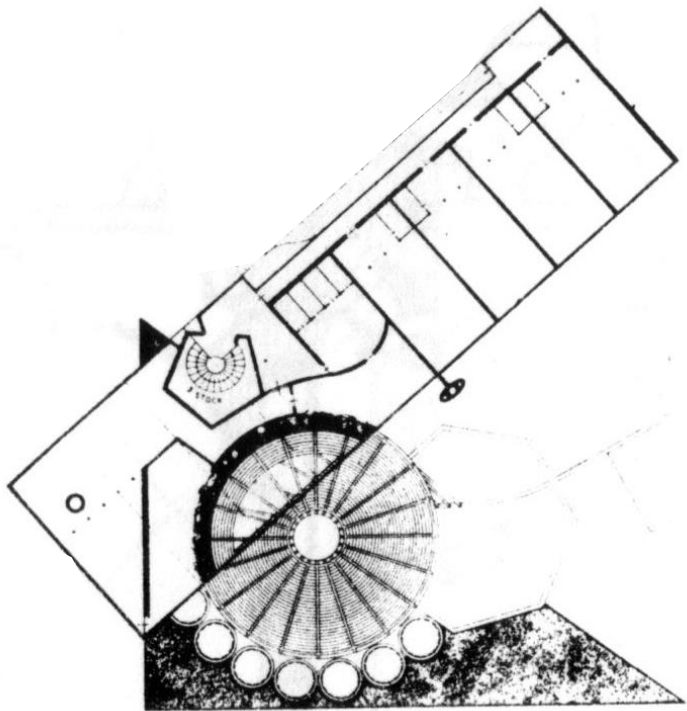
9

OPERACIÓN 9
EL CIRCULO COMO ARTICULADOR



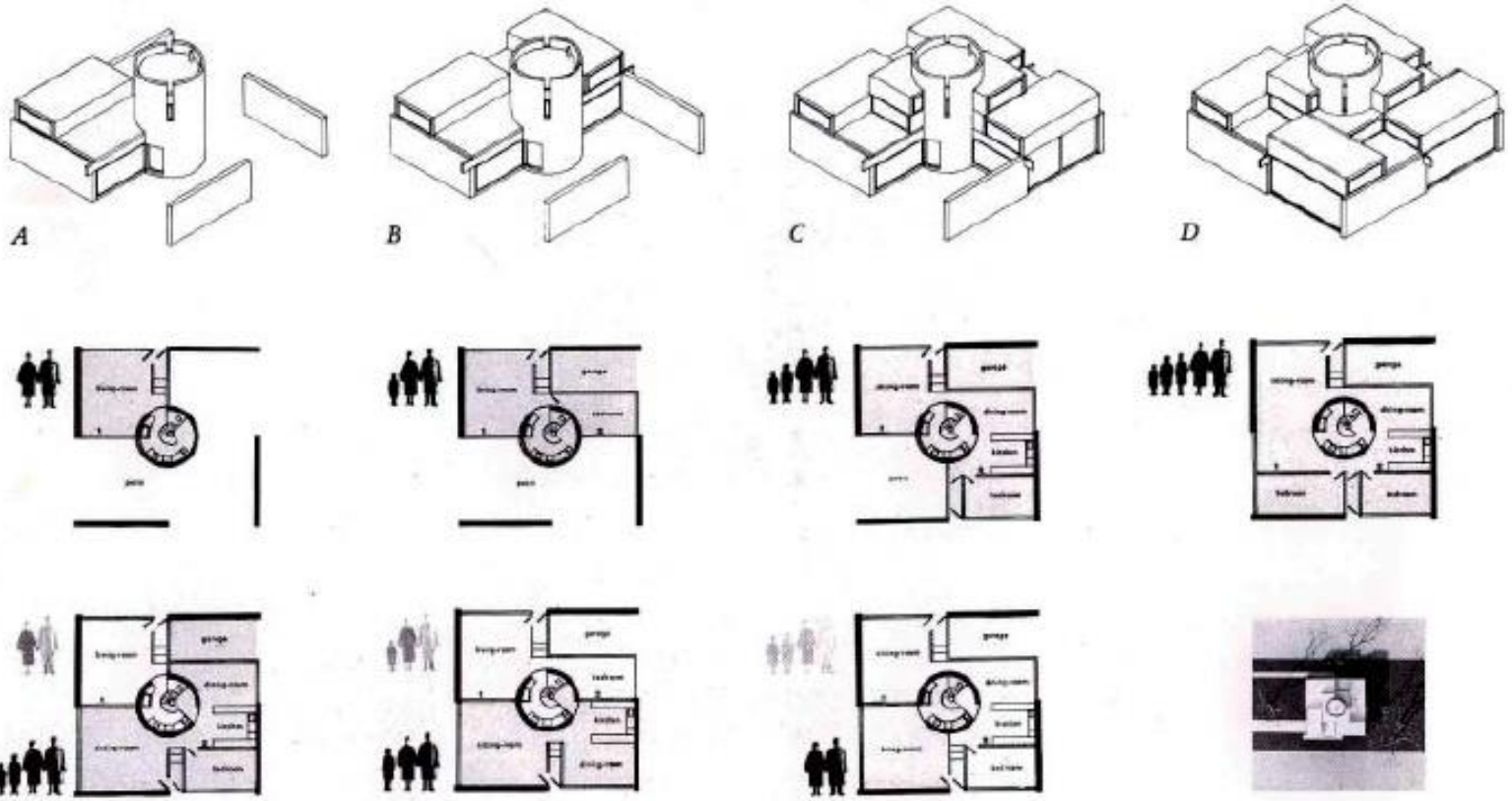
VILLA DE ADRIANO
TIVOLI
118aC

OPERACIÓN 9
EL CIRCULO COMO ARTICULADOR



GERHARD ULLREICH
VIVIENDAS DE CONVIVENCIA
1981

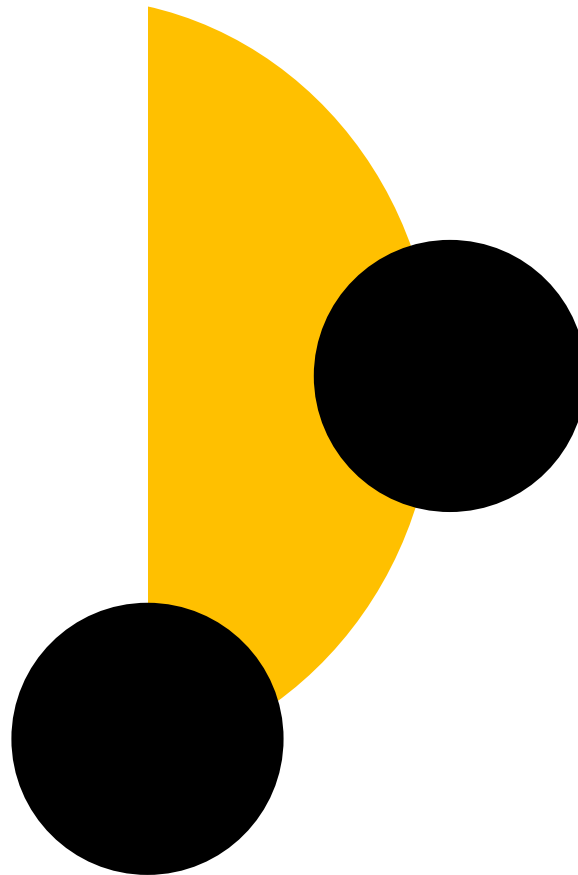
OPERACIÓN 9
EL CIRCULO COMO ARTICULADOR



JAMES STIRLING
CASA ADAPTABLE

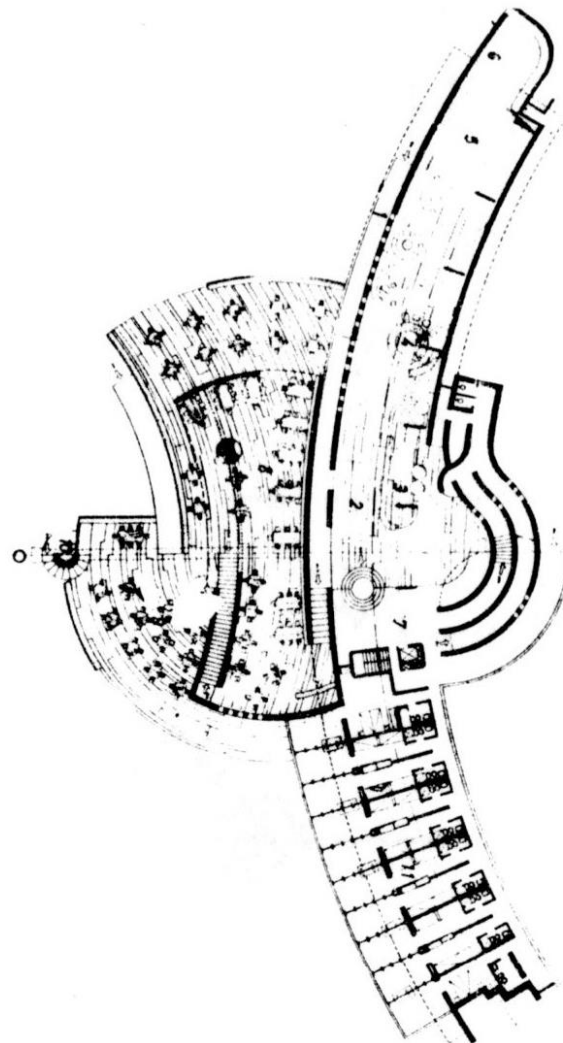
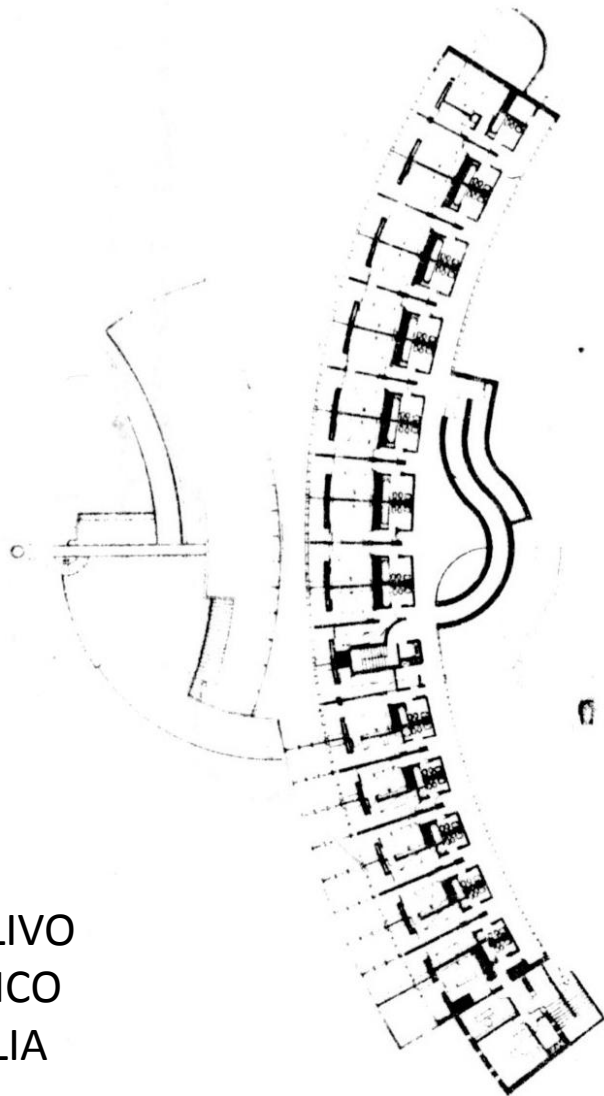
OPERACIÓN 9
EL CIRCULO COMO ARTICULADOR





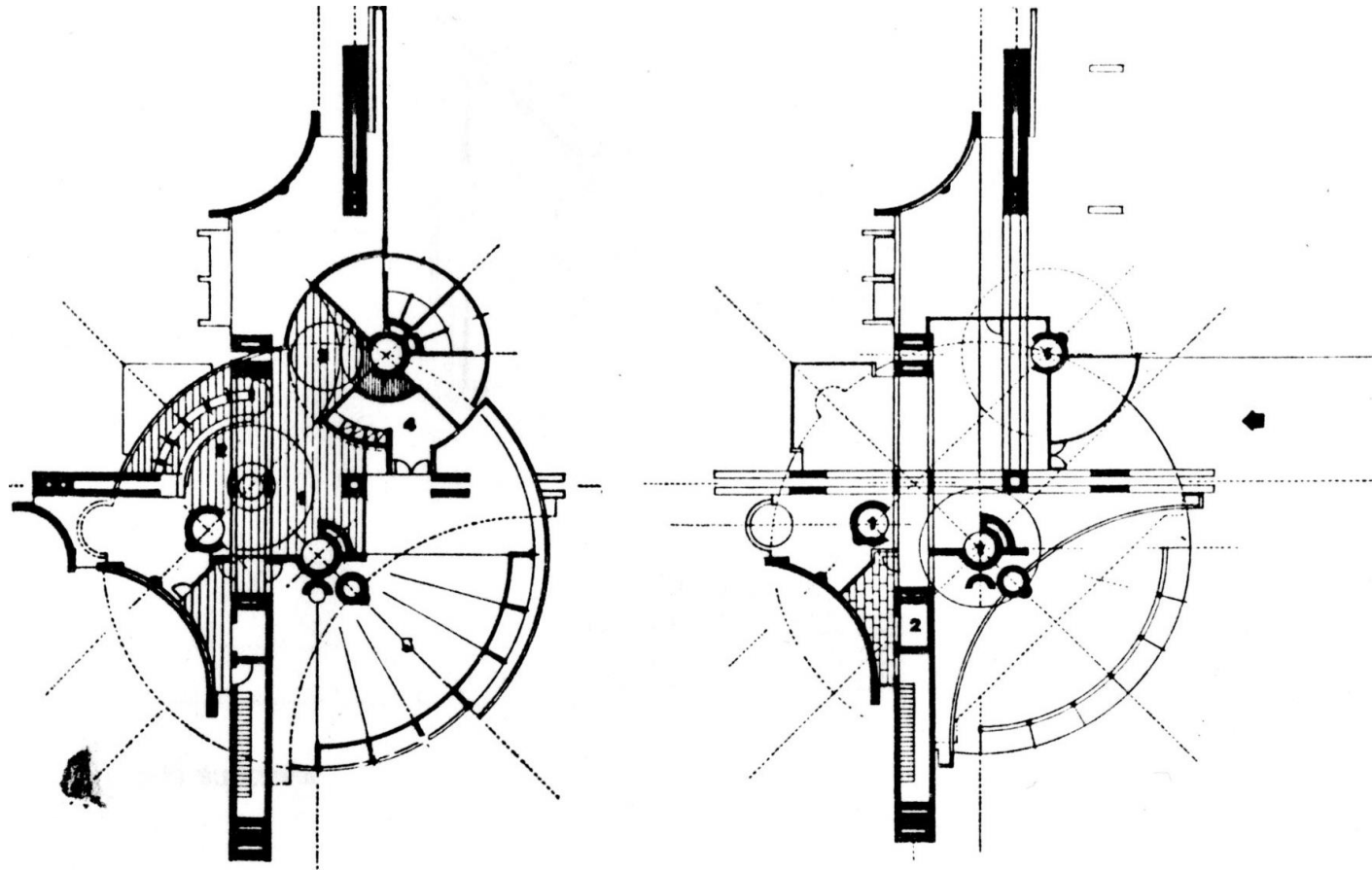
10

OPERACIÓN 10
CIRCULO Y COMPOSICION INTEGRAL



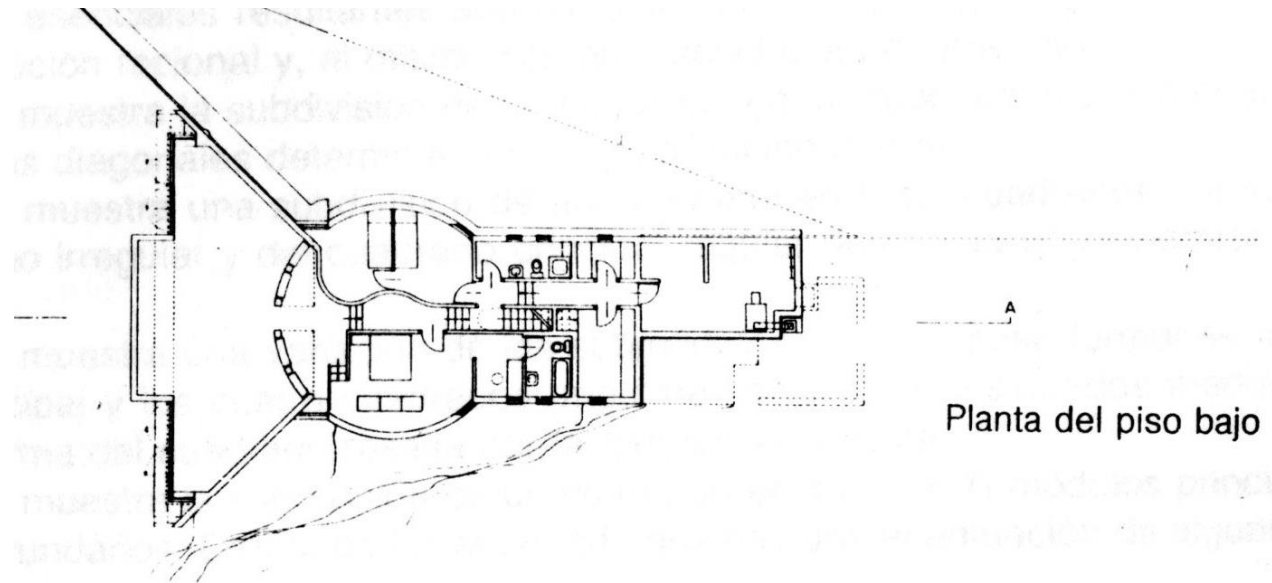
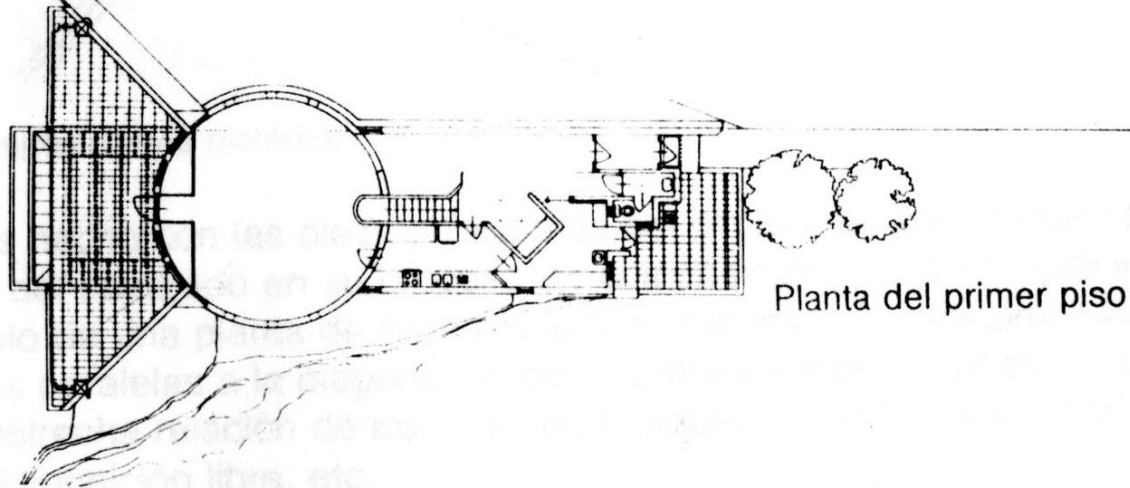
MARCELLO D'OLIVO
CENTRO TURISTICO
MANACORE ITALIA
1959

OPERACIÓN 10
CIRCULO Y COMPOSICION INTEGRAL



ALDO ROSSI
EDIFICIO POLIFUNCIONAL
1965

OPERACIÓN 10
CIRCULO Y COMPOSICION INTEGRAL



FRANCO FONATTI
CASA PONGRATZ
1976

OPERACIÓN 10
CIRCULO Y COMPOSICION INTEGRAL



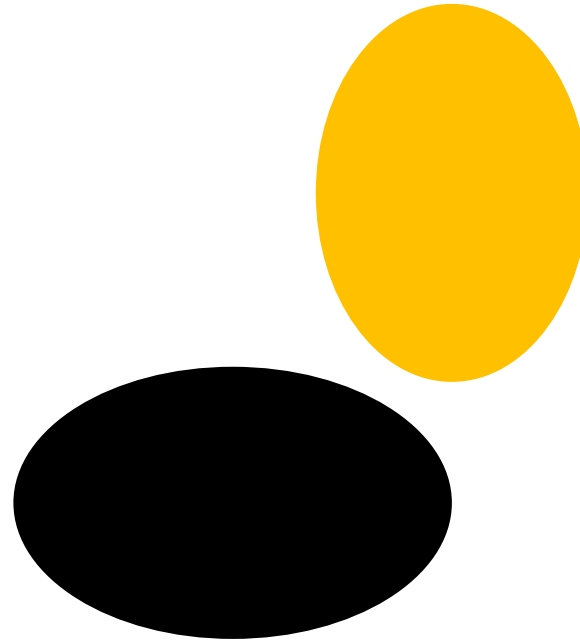
MARCELLO DOLIVO
MANACORE ITALIA



OPERACIÓN 10
CIRCULO Y COMPOSICION INTEGRAL



11

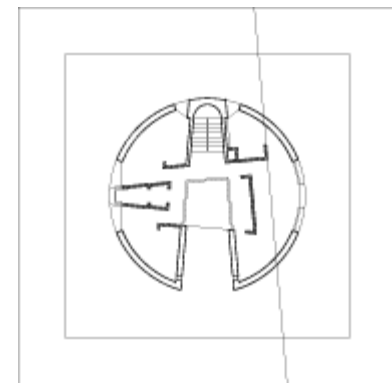
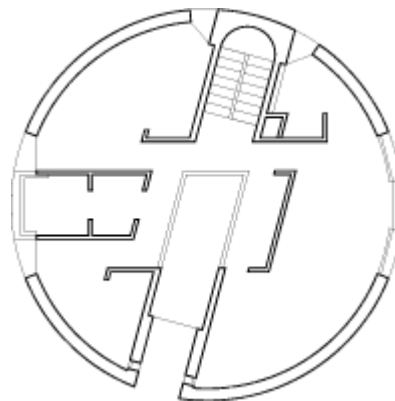
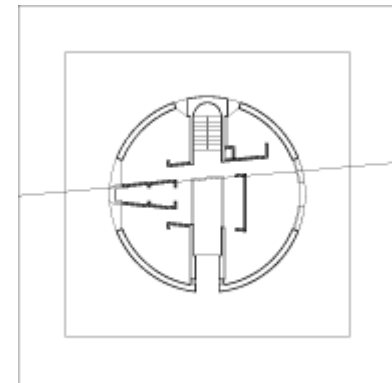
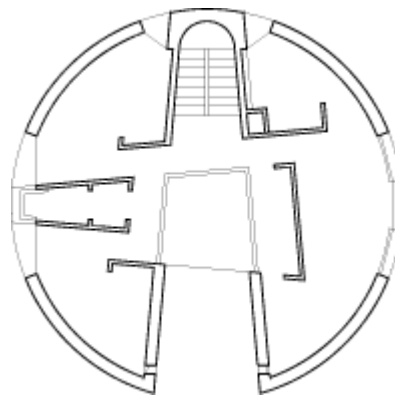
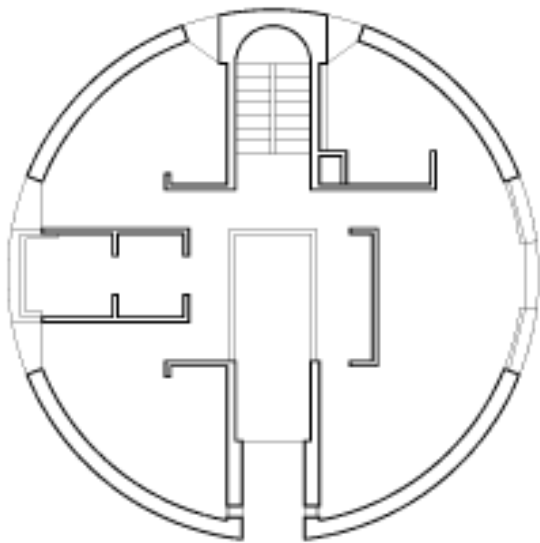


OPERACIÓN 10
CIRCULO Y TRANSFORMACION



CASA SHELL
JAPON

OPERACIÓN 10
CIRCULO Y COMPOSICION INTEGRAL

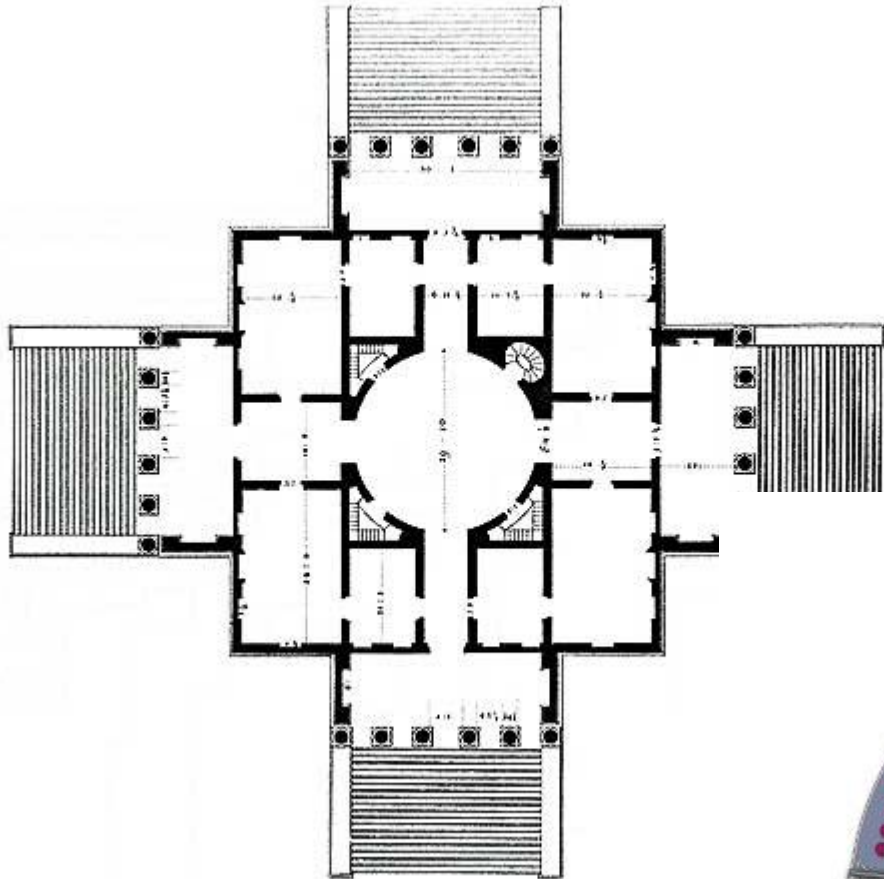


CASA ROTONDA
MARIO BOTTA
EXPLORACION

OPERACIÓN 10
CIRCULO Y COMPOSICION INTEGRAL

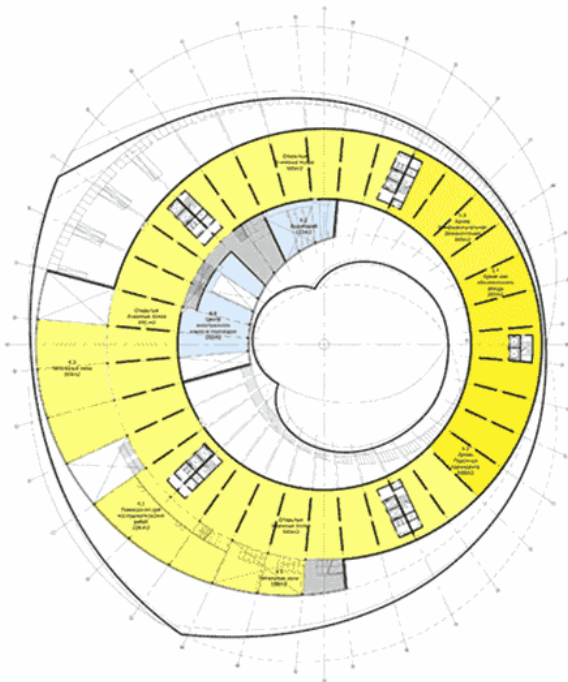
GRACIAS

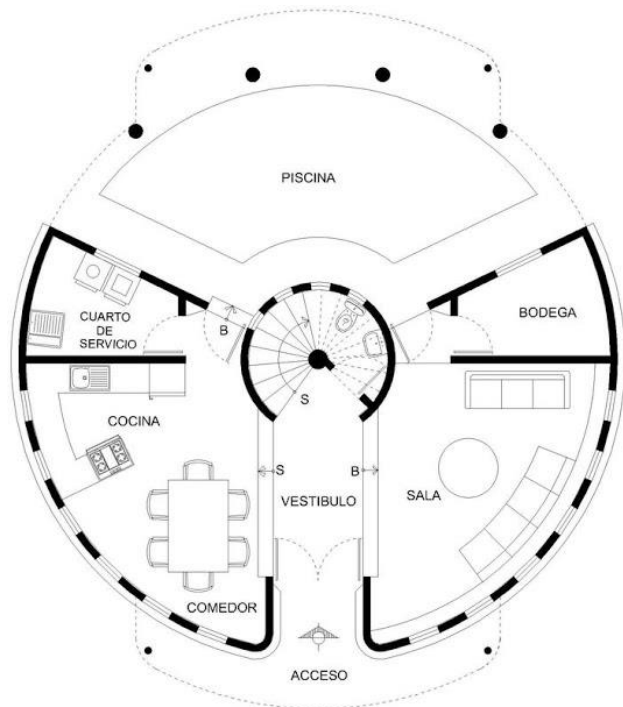






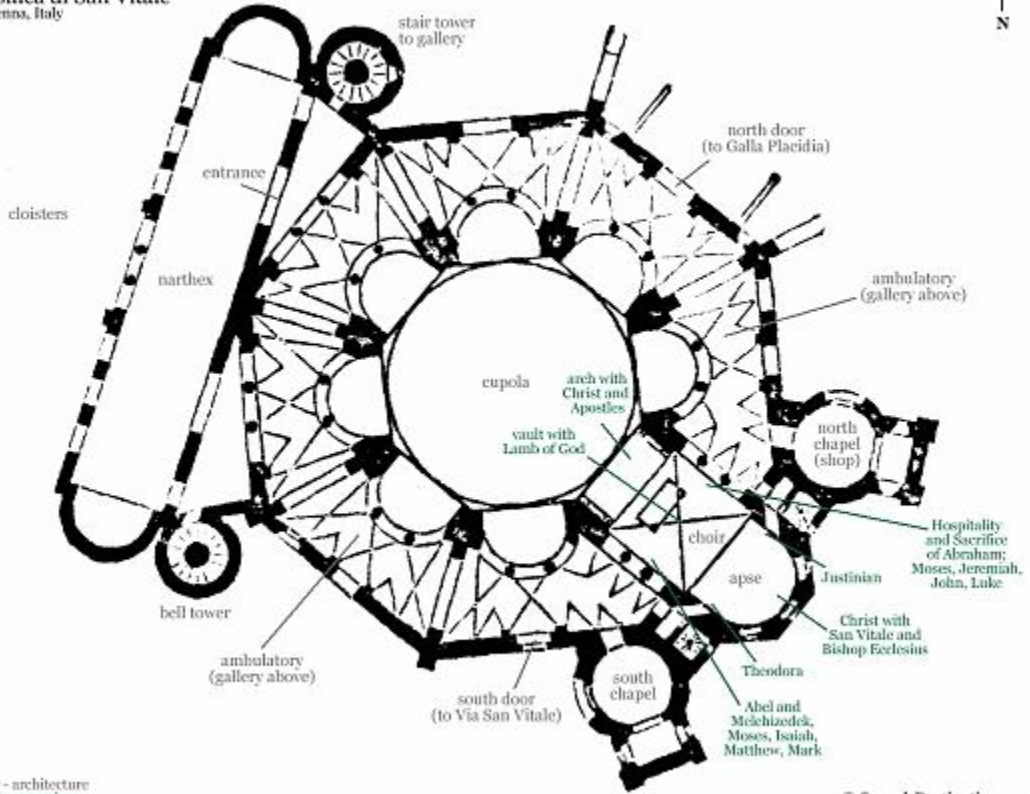
6th floor
5087m2



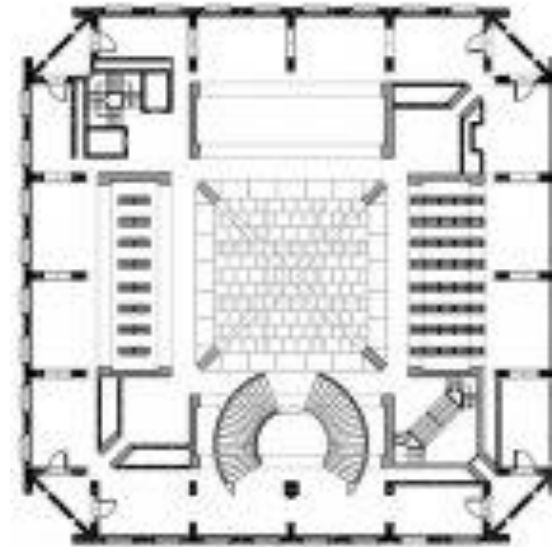


PLANTA BAJA

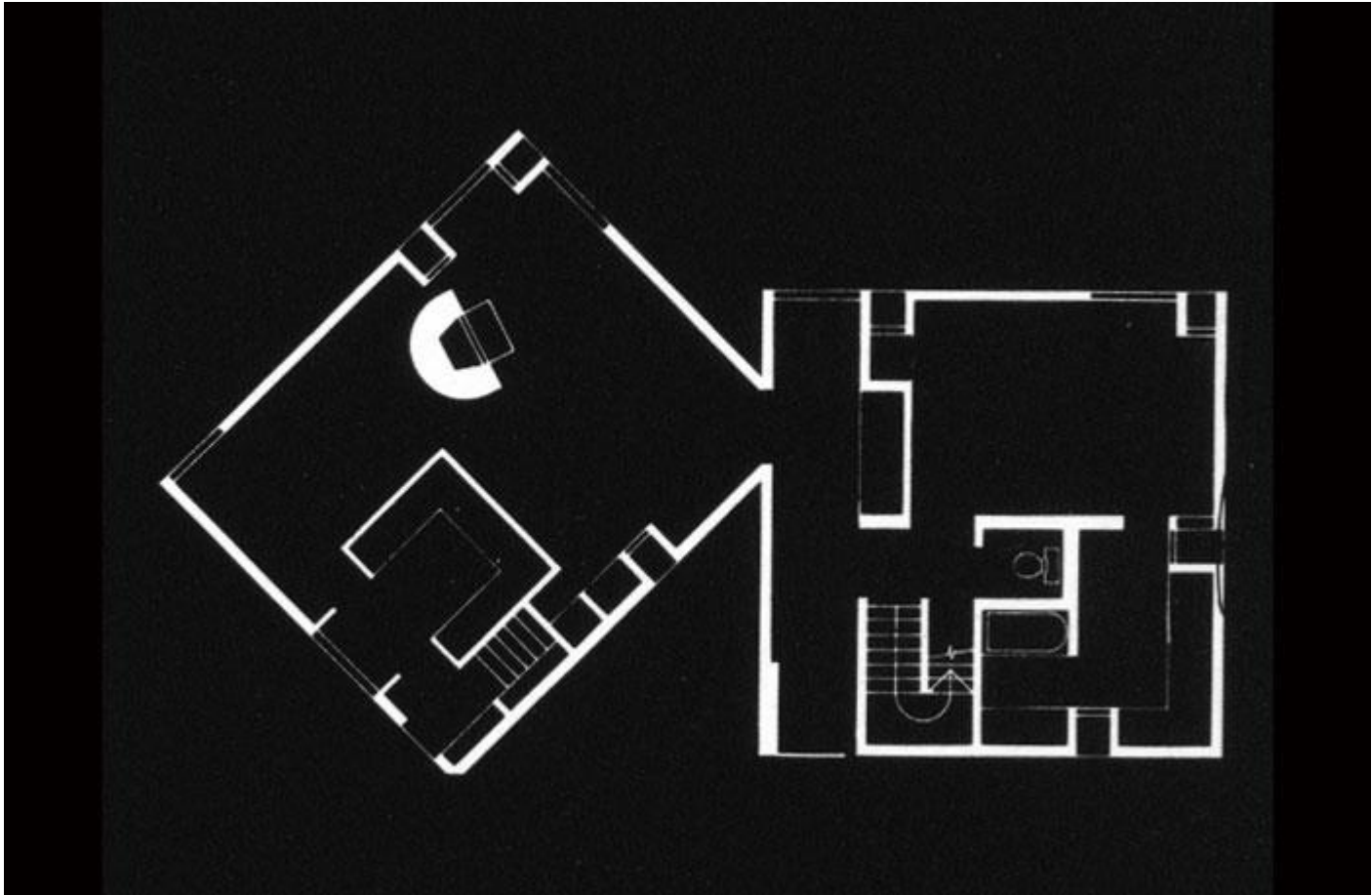
Floor Plan
Basilica di San Vitale
Ravenna, Italy

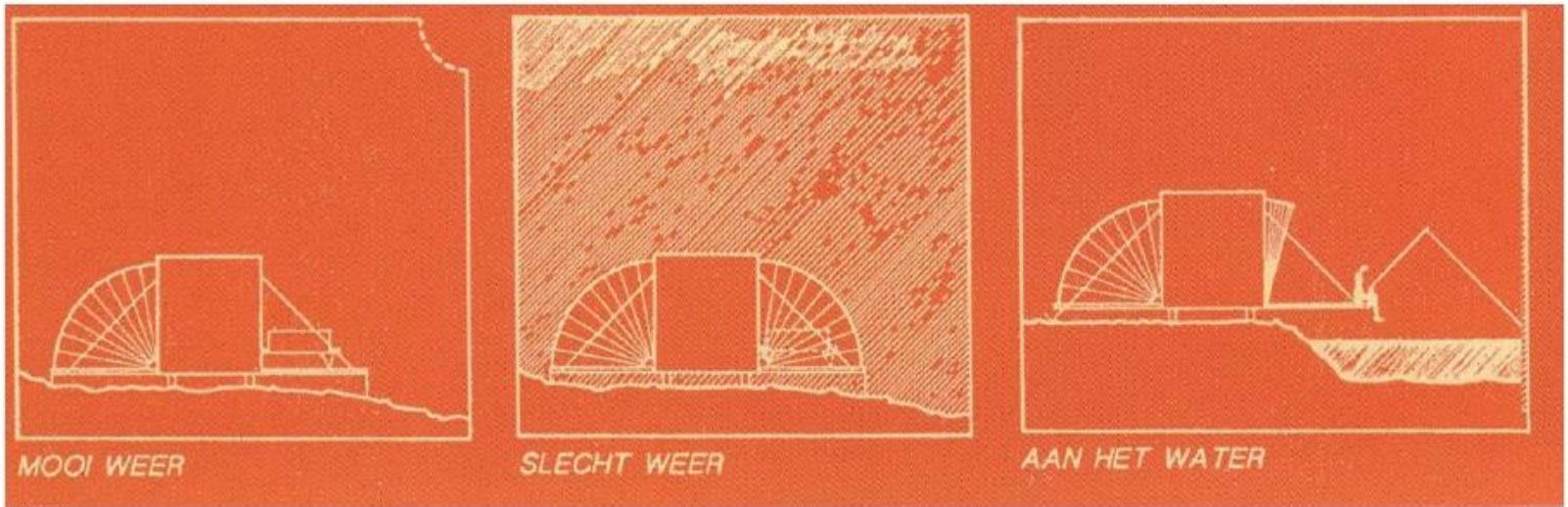


grey - architecture
green - mosaics

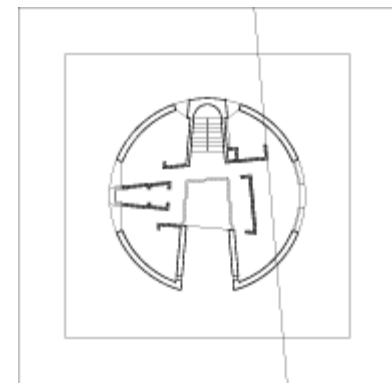
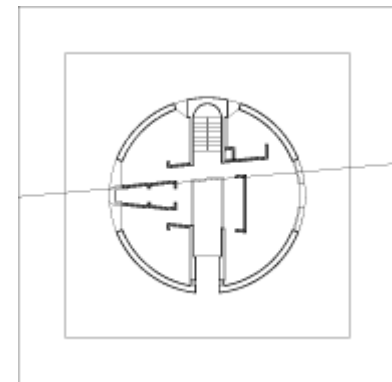
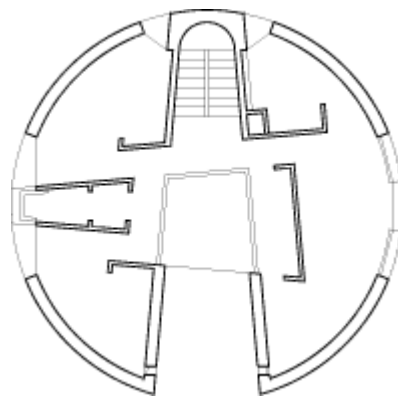
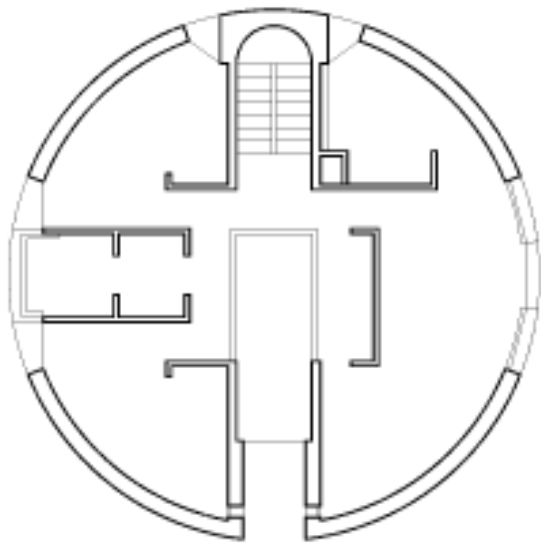


LIBRARY-NEW-HAMPHIRE-
USA. LOUIS KAHN.

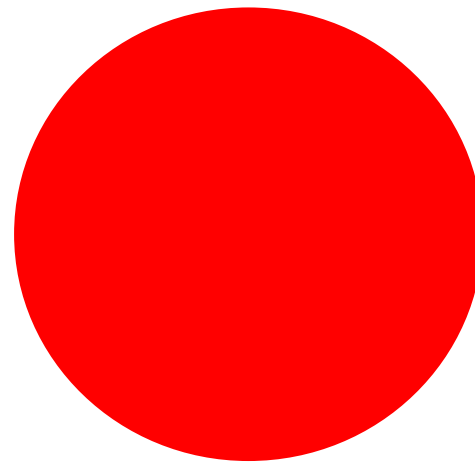
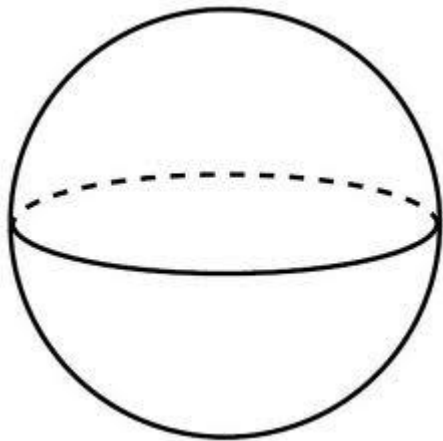




EDUARD BÖHTLINGK
CASA MÓVIL DE VACACIONES. CONCURSO DE
VIVIENDAS TEMPORALES

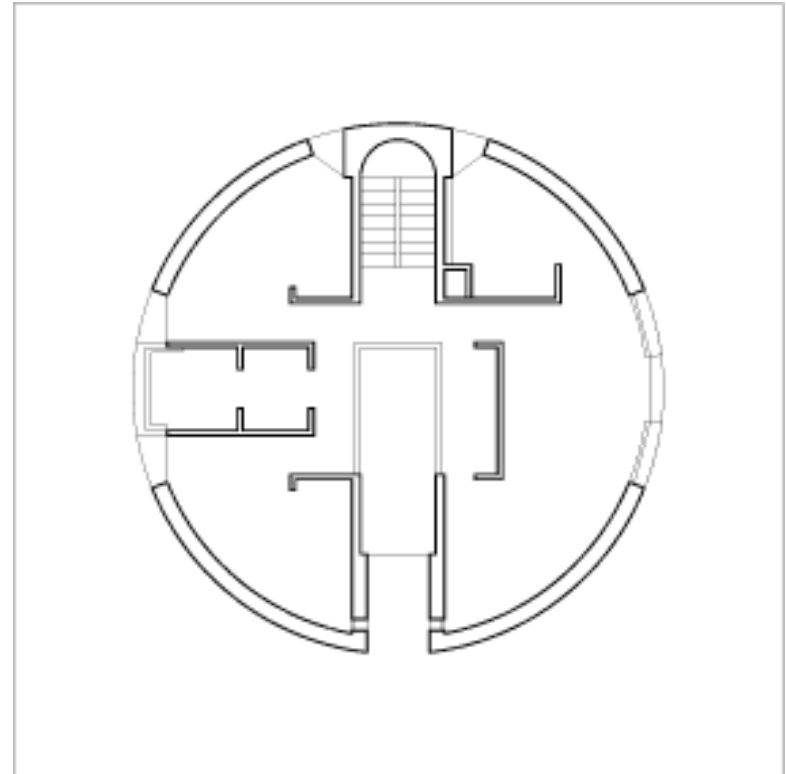


Transformación

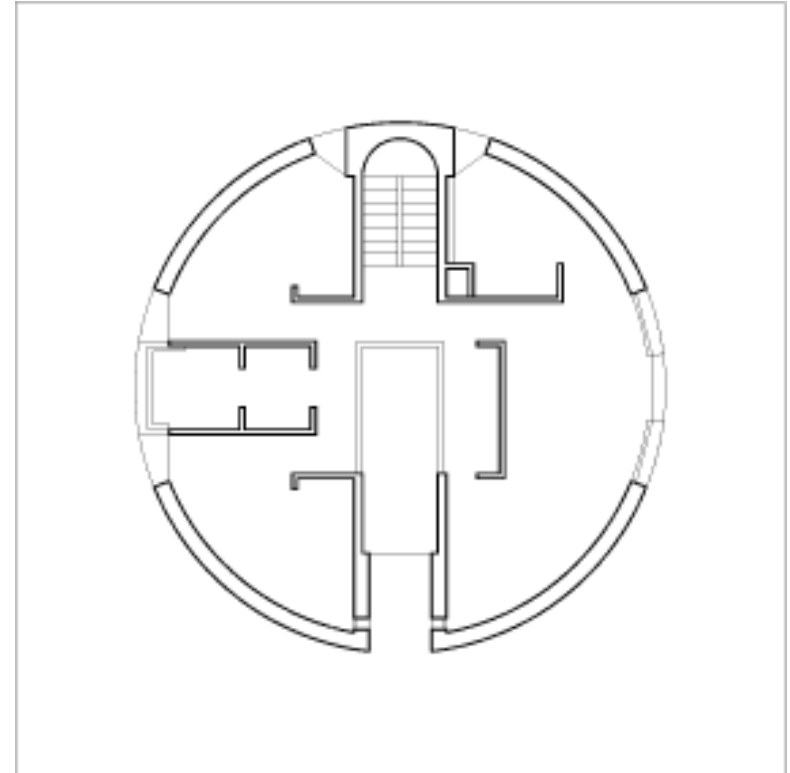


Composición Arquitectónica

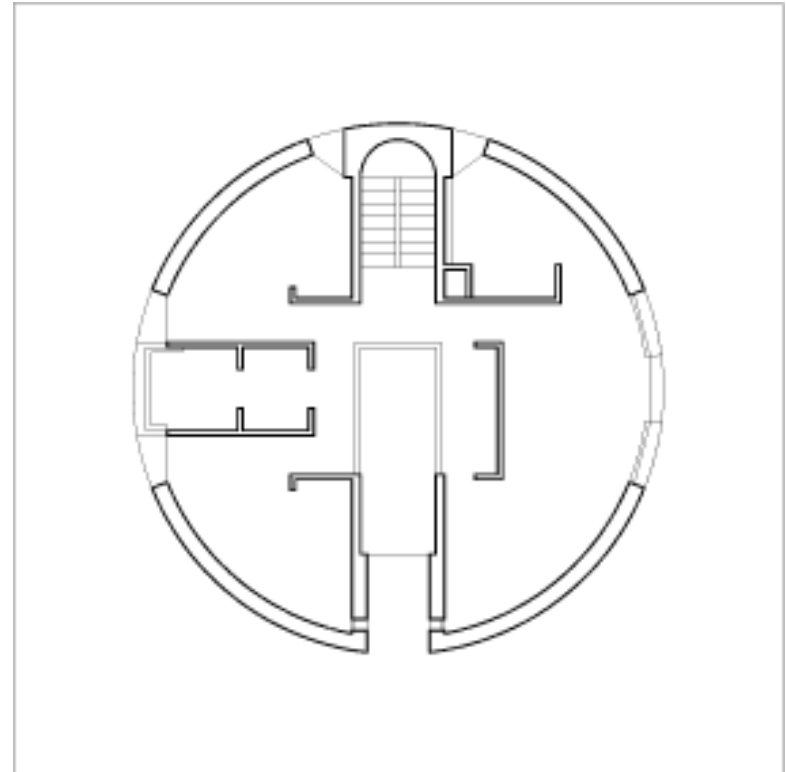
Composición Arquitectónica



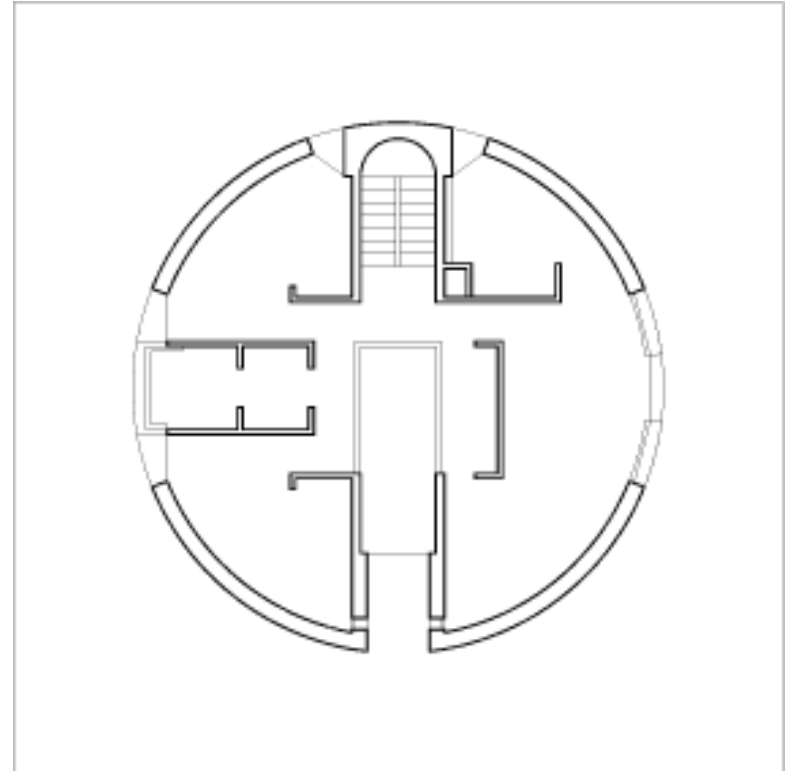
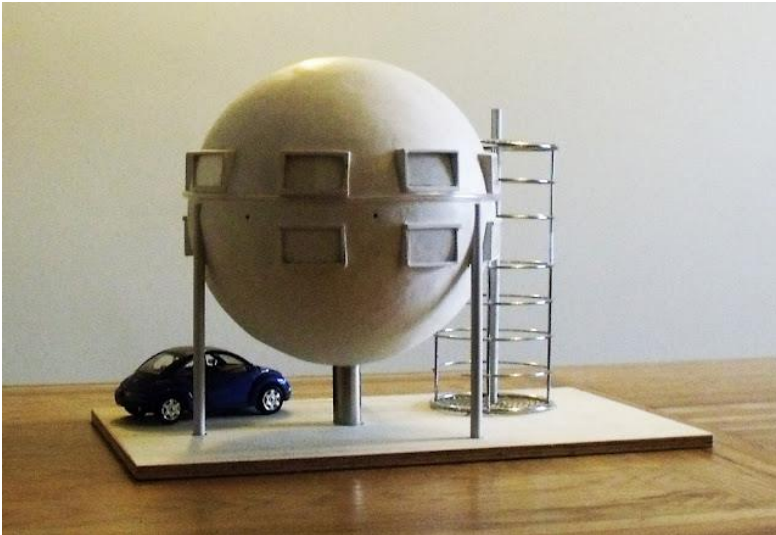
Composición Arquitectónica



Composición Arquitectónica



Composición Arquitectónica



Composición Arquitectónica



Composición Arquitectónica