

# transition design

MFA D.I. Danilo Calvache Cabrera  
Profesor Asociado  
Programa de Diseño Industrial  
Universidad de Nariño  
Colombia

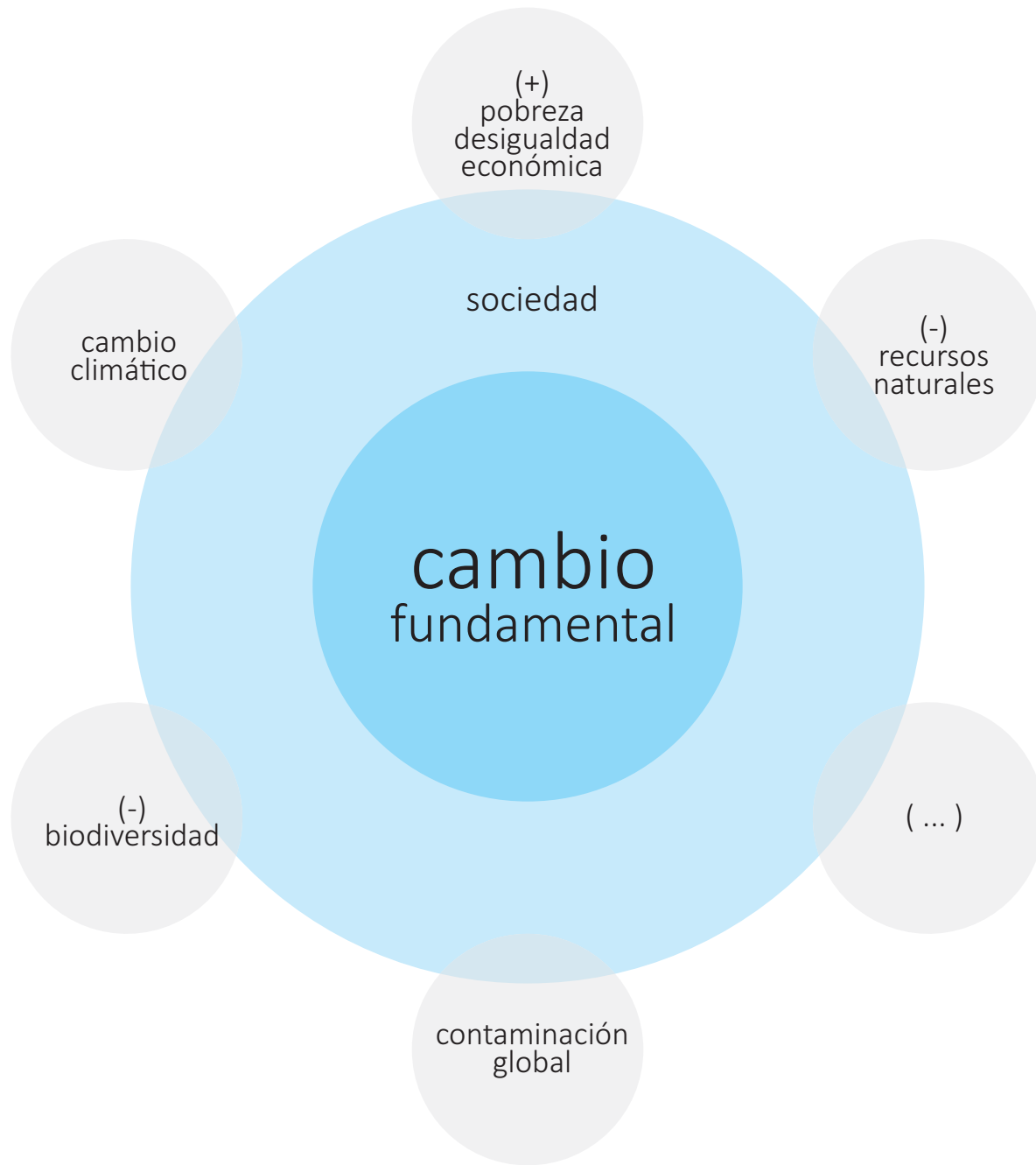


Universidad de **Nariño**





change



cambio  
fundamental

sociedad

(+)  
pobreza  
desigualdad  
económica

(-)  
recursos  
naturales

(...)

contaminación  
global

(-)  
biodiversidad

cambio  
climático

# Transition Design:

Design-led societal  
transition toward more  
sustainable futures

**Professor Terry Irwin**

Head, School of Design, Carnegie Mellon University

**Dr. Cameron Tonkinwise**

Director of Design Studies, School of Design  
Carnegie Mellon University

**Dr. Gideon Kossoff**

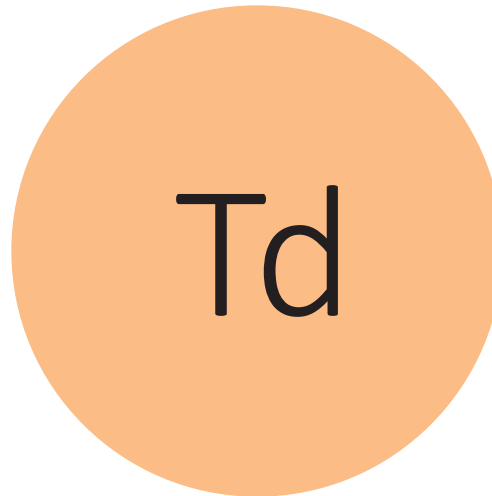
Social Ecologist/Design Theorist

transition  
design

*social*  
*medio*  
*ambiental*

wicked problems  
(problemas  
perversos/intrincados)  
*wp*

>



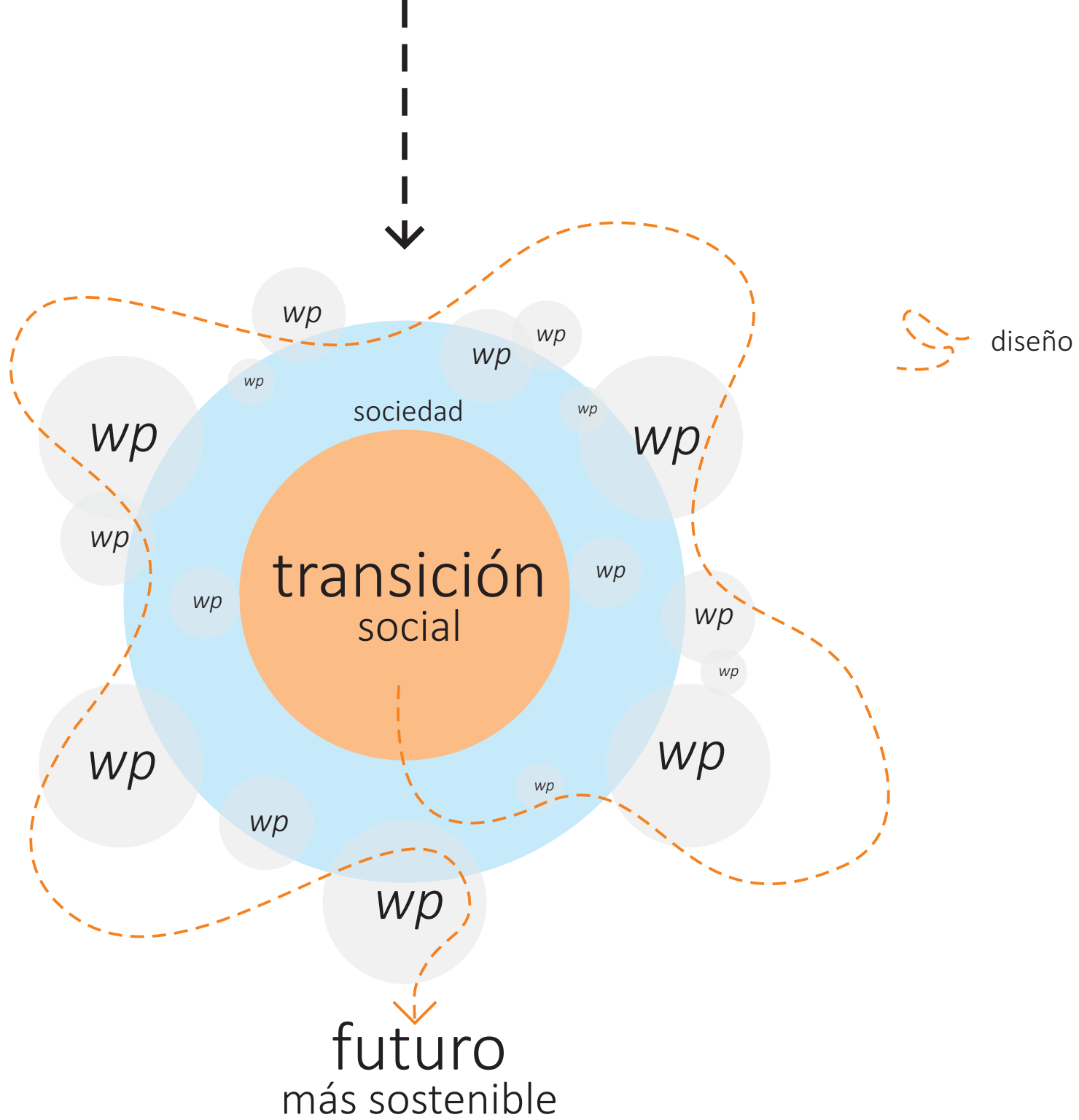
<

Prof. Terry Irwin  
Dr. Cameron Tonkinwise  
Dr. Gideon Kosoff



diseño de (*para la*)  
transición

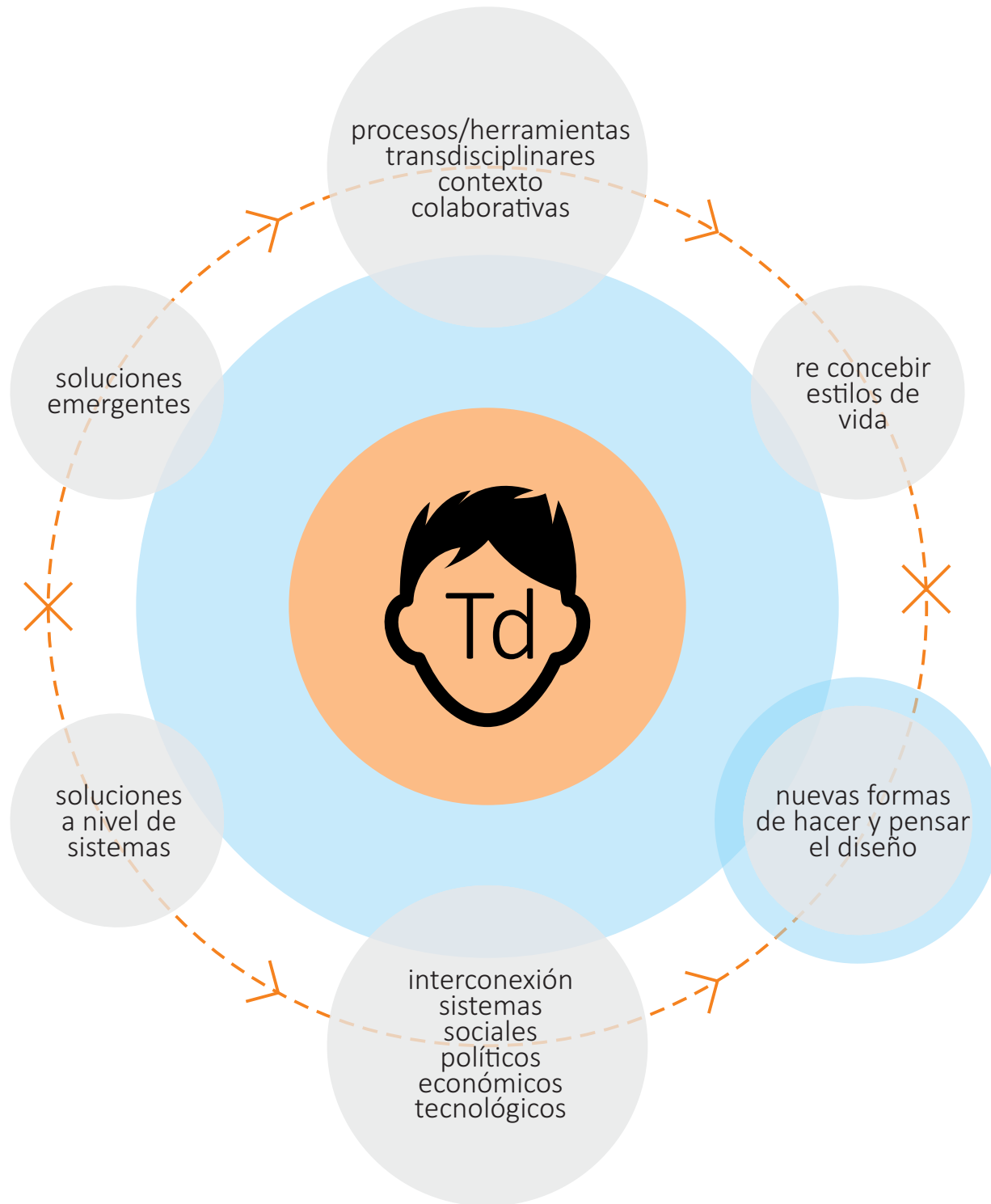


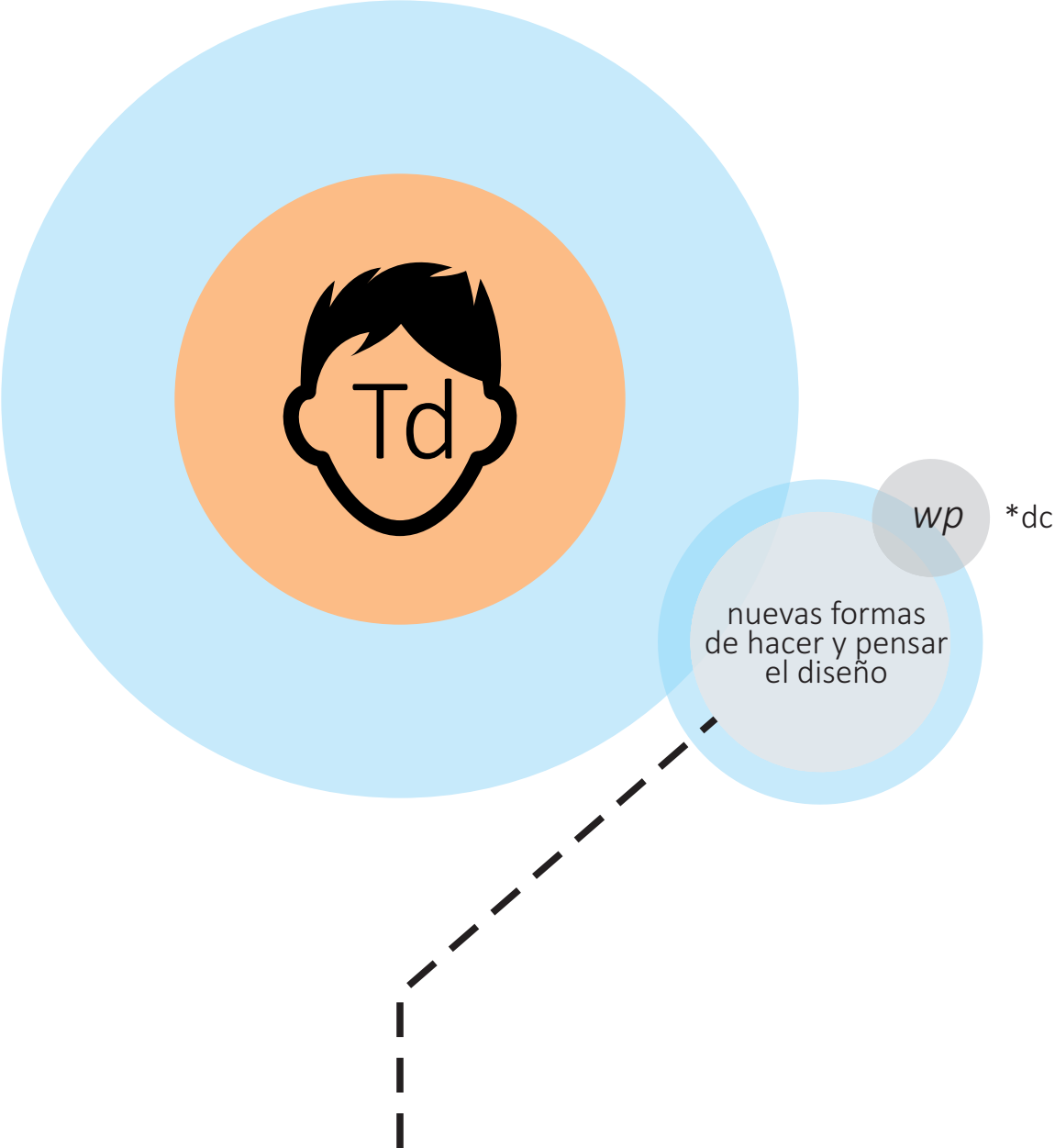


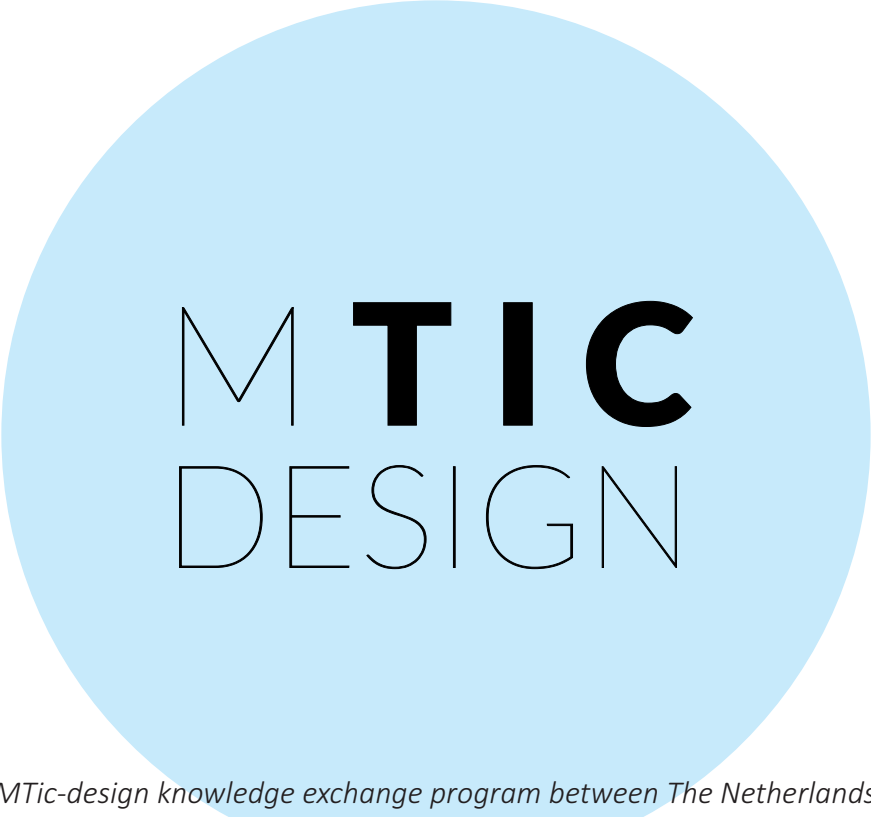
transition designers

diseñadores de (para la) transición









MTIC  
DESIGN

*The MTic-design knowledge exchange program between The Netherlands and Colombia seeks to develop innovative products together and to share and create design knowledge for both professional and educational purposes.*

HOME

PROJECTS

TEAM

DUTCH DESIGN  
WEEK

ABOUT MTIC

CONTACT

The MTic-design knowledge exchange program between The Netherlands and Colombia seeks to develop innovative products together and to share and create design knowledge for both professional and educational purposes.

## TEAM



*Marie-Thérèse Woltering is the program director of the MTic-design knowledge exchange program. She has an extensive background in business as well as international & cultural experience. In 2003 she graduated with an MBA at Webster University and in 2007 she obtained a Master's degree in International Relations at Alliant University in Mexico City.*

*As an independent professional she realizes self initiated projects with business partners with complementary skills.*

*'MT' has an intrinsic motivation to make a difference and add something constructive to the world. Understanding existing connections and establishing new ones are in her nature. She combines creative and analytical skills with insight in international society. These*



*Bas Sala is the design coordinator of the MTic-design knowledge exchange program. In 2000 Bas graduated from the Design Academy in Eindhoven after studying Man & Public Space. He is the owner of Studio Bas Sala, co-founder of Designport Rotterdam and ZoHo. This organization supports young designers in Rotterdam with their first steps in their professional practice.*

*His designs invite you to play, think, do nothing and often raise a smile. Innovation, interdisciplinary co-operation and qualitatively high end products play a central role in his work. In his design practice concept development and practical research play an important role.*

*Bas joined forces with Marie-Thérèse, because he feels it's very*



*Danilo Calvache is coordinator of the MTic-design knowledge exchange program in Colombia, in charge of the search for Colombian designers and coordinating the research project with the local design school at the Universidad de Naricó. Danilo graduated as an industrial designer from the Pontificia Universidad Javeriana in Bogotá, and holds a Master Degree in Design from Domus Academy.*

*Actually he's developing a research project as thesis for a PhD in Design, at the Universidad de Palermo in Buenos Aires, Argentina. He works as full time teacher for the I.D. program at the Universidad de Naricó in Pasto, Colombia, and leads the design research group CORD, that collaborated with the MTic-design research project.*

*In 2014 he joined the MTic-design*

## design project

8 dúos

Moak Studio – Emma Van Eijkeren  
Laura Palacio – Daniel White  
Rick Tegelaar – Juanita Betancur

Luuk Van Den Broek – David H. Del Valle  
Erik Stehmann – Danilo Calvache  
Luis Bernal – Studio Ps

Reinhard Dienes Studio  
Bernardo Calvache Molina – Lambert Kamps

3 temáticas

local local

seduction

water

La co creación en diseño, de carácter inter cultural e internacional, es un escenario que ofrece la oportunidad de aprender desde las mejores prácticas identificadas desde ambos lados del Atlántico, en este caso Holanda y Colombia, de manera que puedan desarrollarse nuevos procesos de diseño en conjunto.

Los diseñadores que hacen parte del MTic-design Project, como parte de sus actividades, generaron un registro de los procesos que desarrollaron conjuntamente, y compartieron sus experiencias individuales de diferentes maneras.

# research project

3 universidades

ROTTERDAM BUSINESS SCHOOL  
ROTTERDAM UNIVERSITY OF APPLIED SCIENCES

UNIVERSIDAD DE NARIÑO  
Programa de Diseño Industrial (\*)

HOGESCHOOL VOOR DE KUNSTEN UTRECHT  
University of the Arts  
Product Design Program

Paralelo al Proyecto de Diseño, universidades de Holanda y Colombia desde sus programas académicos en los campos del diseño y los negocios internacionales, son las encargadas de investigar los procesos de colaboración intercultural surgidos en el desarrollo de producto.

Este proyecto se ocupa de investigación aplicada, de manera que pueda obtener información concreta con el propósito de ser útil para los profesionales y la academia: estudiantes de diseño, diseñadores, estudiantes de negocios internacionales, compañías internacionales y otras organizaciones, que permitan mejorar su política de recursos humanos hacia operaciones internacionales.

(\*) El Grupo de Investigación CORD, adscrito al programa de Diseño Industrial de la Universidad de Nariño, se encuentra desarrollando actualmente el proyecto de investigación denominado:

*Análisis de los procesos de intercambio cultural de conocimiento como herramienta para la generación de innovación desde el diseño*  
MTic-design Research Project Universidad de Nariño 2016



encuentros







intercultural  
design process

www



email

*knowledge*

*concepts / tools  
sharing*

Pasto

Buenos  
Aires (\*)

Arnhem

studio  
erik  
stehmann

dc/ds  
danilo calvache  
design studio

references research  
material research  
techniques testing

design  
related  
activities

references research  
concept sketching  
product approach

cooperation



How are the meshes for print? 17:15 ✓✓

perfect!!!!!!!!!!!!!! 17:15

today we are in it. lower the weight achieved last night, now I'm going to see how it will print 17:16

So filming the process? 🤩 17:28 ✓✓

YES. MY FRIENDS GO TO RECORD THE PROCESS 17:29

:) 17:29

Vamos!! 😊😊 17:29 ✓✓

Cool 17:29 ✓✓

VAMOS TIO 17:29

Yeah!! 20:30 ✓✓

And what part is the handle of the kettle is it a knee? 23:35 ✓✓

Ok going for a sleep Lets talk tomorrow 23:36 ✓✓

Ciao 23:36 ✓✓

Great job by The way 23:36 ✓✓

Gisteren

luuk 16:55

hi 16:55

you send the INDEX .please Revis grammar. Anything you need you tell me. 16:55

I SEND YOU \* 16:55

now :) 16:55

check out the grammar 16:56



productos



Me dinner set | Moak Studio – Emma Van Eijkeren



Whisper lamp | Luis Bernal – Studio Ps



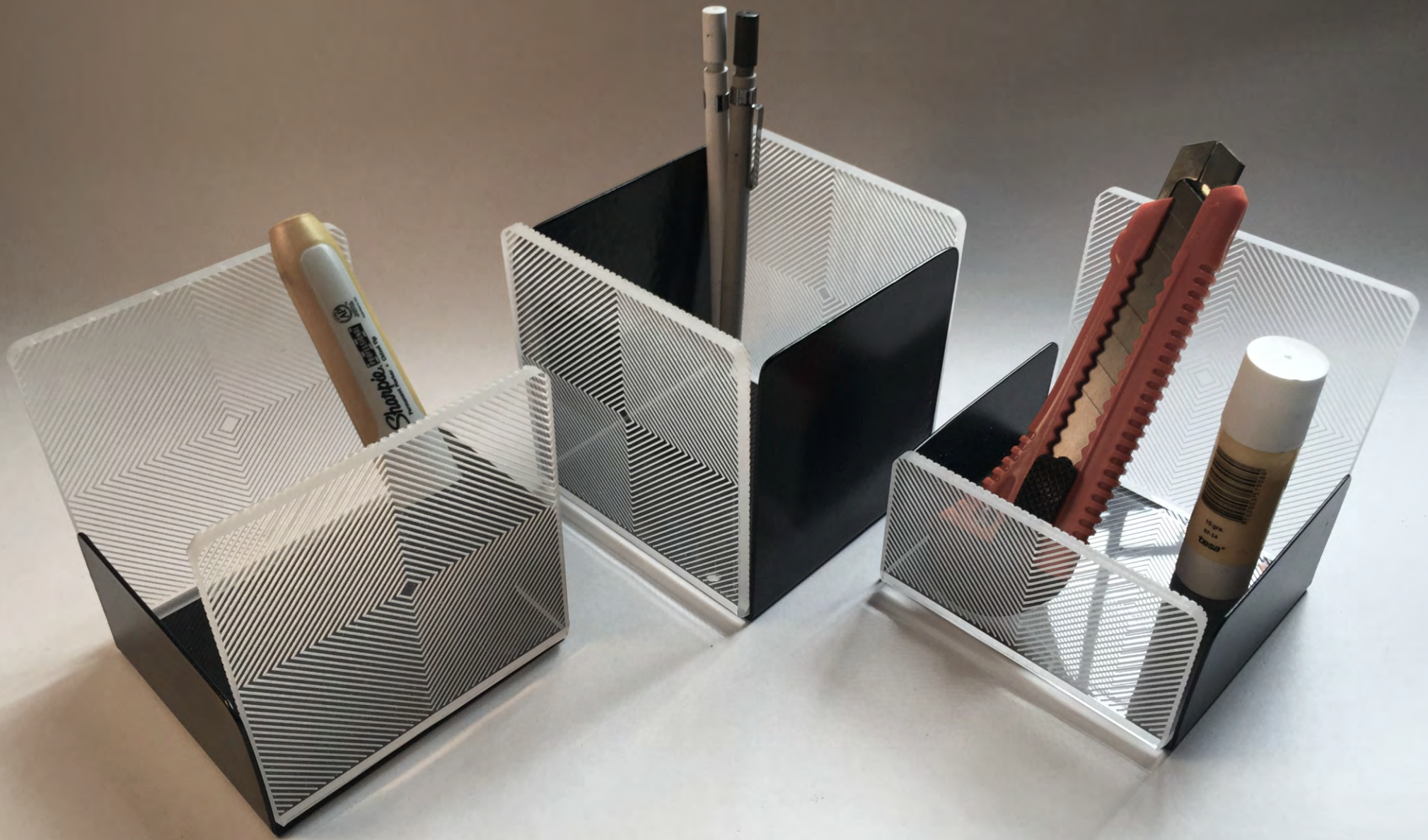
WHISPER





Perspexives | Erik Stehmann

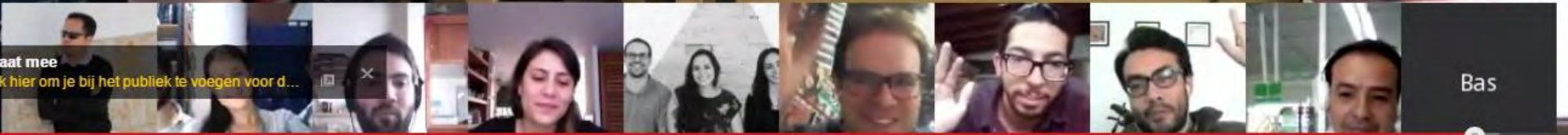
PERSPEXIVES  
BY  
studio erik stehmann



Pol desk organizers | Danilo Calvache

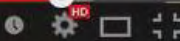


**Praat mee**  
Klik hier om je bij het publiek te voegen voor d...



Bas

2:28:42 / 2:37:30





socialización



DUTCH  
DESIGN  
WEEK

EINDHOVEN

17-25 OCT 2015



MTIC  
DESIGN

# 2da EDICIÓN

JUNIO 18 - 24 MEDELLÍN 2016

[medellindesignweek.com](http://medellindesignweek.com)



<http://transitiondesign.net/>



transitiondesigncmu

<http://mtic-design.nl/project/>



MTicdesign



[www.behance.net/danilocalvache](http://www.behance.net/danilocalvache)



[www.danilocalvache.com](http://www.danilocalvache.com)



danilo calvache / design studio





gracias